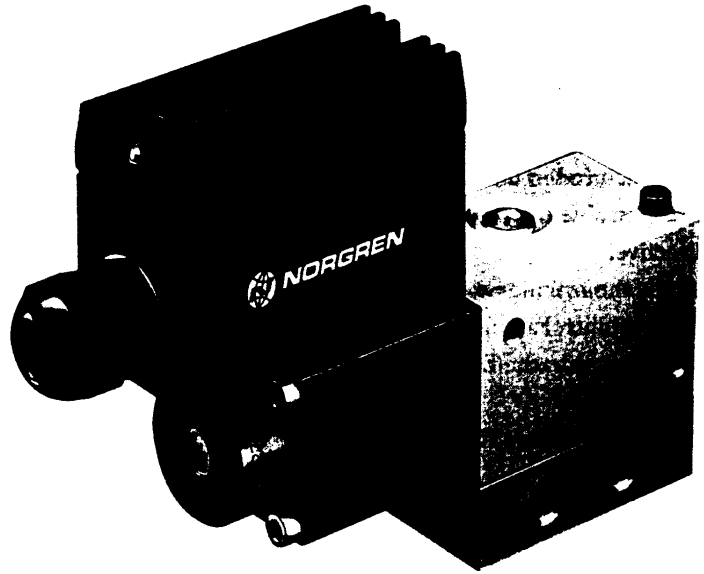
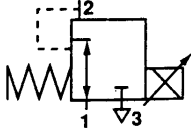


# Pascaflex

## Proportional Pressure Solenoid Valve

G<sup>1</sup>/<sub>8</sub>



### FEATURES

Electrical control of pneumatic pressure.

Fast step response time.

High dynamic accuracy.

Fail-safe fast exhaust on power loss.

Factory or custom defined setup.

Supplied with or without amplifier.

### TECHNICAL DATA

#### Medium:

Compressed air, 40µm filtered, lubricated and non-lubricated.  
Lubrication recommended at:  
> 40°C, > 0,5 Hz or > 400 L/min.

#### Operation:

Direct acting proportional solenoid controlling glandless spool. Change in voltage/current gives proportional change in pressure.

#### Mounting:

Sub-base or surface mounted.

#### Port Size: G<sup>1</sup>/<sub>8</sub>

#### Operating Pressure:

Maximum inlet pressure 10 bar.  
For details see table. Regulation pressure 0 - 5 bar or 0(1)- 8 bar

#### Flow Characteristics (nominal):

l/min	Cv	Kv
750	0,76	0,66

#### Degree of Protection:

IP 64 with correct plug fitted.

#### Ambient Temperature:

-5°C to +50°C.

Consult our Technical Service for use below +2°C

### ALTERNATIVE MODELS

Pneu-Stat - see page 286.

### MATERIALS

Die cast aluminium body.  
Hard anodised, Teflon coated, matched aluminium spool and sleeve. Nitrile rubber seals.  
Zinc plated screws.

PDW 5321-115	Yes	0 - 5	0 - 5	0 V = 0 bar	2	0,77
PDW 5321-125	Yes	0 - 8	1 - 8	0 V = 0 bar	1	0,77
PDW 5321-110	No	0 - 5	0 - 5	-	-	0,63
PDW 5321-120	No	0 - 8	1 - 8	-	-	0,63

Customer defined setup of gain and offset possible.

#### Electrical Details for Amplifier

Supply Voltage	24 V=
Voltage Range:	18 - 32 V=
Residual Ripple:	max. 10%
Output Current for Solenoid:	2,4 A
Stabilised Voltage:	15 V=, max. 5mA
Base Current (Adjustable) I <sub>min</sub> :	0 - 2 A
Maximum Current (Adjustable) I <sub>max</sub> :	0 - 2,4 A
Dither Amplitude (Adjustable):	0 - 100 mApp
Dither Frequency (optional):	50 or 100 Hz
Ramp Rise and Decline Time:	0,1 - 7 s (FS)
Input Signal:	0 - +10 V or 0 - +15 V
	0 - 20 mA
	Potentiometer or any resistance
	5 - 20 kΩ
Protection Class:	IP 65
Connection/Amplifier:	Pg 11
Internal Fuse:	F 2A

#### Electrical Details for Solenoid

Voltage (nominal):	24V=
Rating:	100% E.D.
Current:	Max. 0,8 A at 24VDC
Electrical Connection:	DIN 43 650 table 'A'
Standard Plug:	May be rotated through 360° at 90° intervals
Solenoid Coil:	May be rotated at 90° intervals
Protection Class:	IP 64 (DIN 40 050), with correct plug

For details of connector plugs and indicators see pages 192-197.

#### Pneumatic Details for Valve with Amplifier

Maximum Flow:	750 l/min
Static Air Consumption:	2,5 l/min
Linearity:	< 0,3 bar
Sensitivity:	< 0,2 bar
Hysteresis:	< 0,3 bar

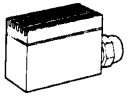
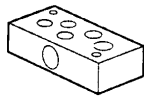
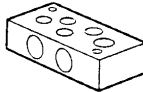
Flow measured at 10 bar inlet, 6 bar outlet with a pressure drop of 4 bar.

1009690

# Pascaflex

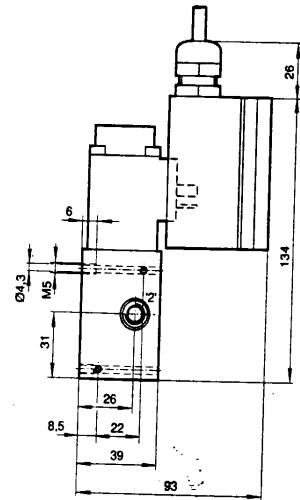
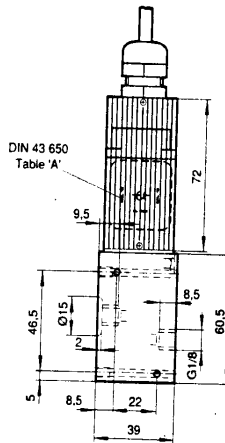
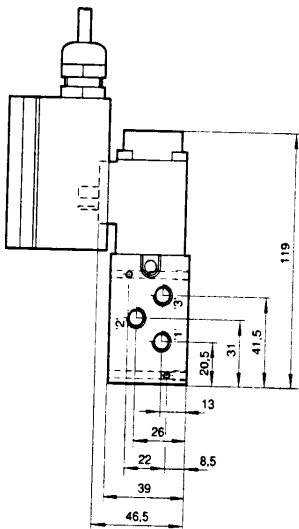
Proportional Pressure Solenoid Valve  
G<sup>1</sup>/<sub>8</sub>

## MOUNTINGS

		
Amplifier PPZ 1200	LH Side Ported Sub-base FP 4006 G <sup>1</sup> / <sub>8</sub> FP 4009 G <sup>1</sup> / <sub>4</sub>	RH Side Ported Sub-base FP 4007 G <sup>1</sup> / <sub>8</sub> FP 4010 G <sup>1</sup> / <sub>4</sub>

## DIMENSIONS

Proportional Valve with Amplifier  
PDW5321-1\*\*



Left Hand Side Ported Sub-Base

Right Hand Side Ported Sub-Base

