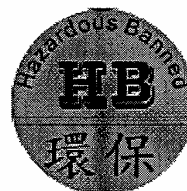


CUSTOMER: Stontronics

PART NUMBER: T 3 6 2 0 S T



**APPROVAL
SHEET**

FOR

SWITCHING ADAPTER

MODEL NO.

DSA-30PF-12

ORDER NO: YS3-01988

承認書確認后請簽回一份

CUSTOMER APPROVED SIGNATURE

CUSTOMER APPROVED SIGNATURE			

DEE VAN ENTERPRISE CO., LTD (Head-Quarter)

NO. 5, PAO-KAO RD, HSIN-TIEN, TAIPEI COUNTY, TAIWAN, R.O.C

TEL: +886-2-2917-7002 (12 LINES), FAX: +886-2-2915-4370, +886-2-2918-7244

DEE VAN ELECTRONICS (SHEN ZHEN) CO., LTD (Factory)

5 th Industrial District, Gong Ming Town, Baoan County, Shen Zhen, Guang Dong, CHINA

TEL: +86-755-2773-6530 ~ 7, FAX: +86-755-2773-6538 ~ 9

1. SPECIFICATION

-- 1 / 4

0. REVISION CHANGE DESCRIPTION

Revision	Description	Date
A	Initial release	2007,02,01

1. GENERAL DESCRIPTION

This specification defines the input, output, performance characteristics, environment, noise and safety requirements for a 25.2 watts switching type power adapter.
 The adapter input/output are full range AC input and +12 VDC with 25.2 watts maximum output.

2. INPUT REQUIREMENT

2-1 AC INPUT VOLTAGE

MINIMUM	NOMINAL	MAXIMUM
90 VAC	100 – 240 VAC	264 VAC

2-2 AC INPUT FREQUENCY

MINIMUM	NOMINAL	MAXIMUM
47 Hz	50 / 60 Hz	63 Hz

2-3 AC INPUT CURRENT

NOMINAL AC INPUT VOLTAGE	0.7 A maximum
--------------------------	---------------

2-4 AC INRUSH CURRENT

AT FULL LOAD, 25 DEGREE C, COLD START

NOMINAL AC INPUT VOLTAGE	No damage shall be occurred and the input fuse shall not be blown up.
--------------------------	---

2-5 CONFIGURATION

Wall-mount type, US-pin,EU-pin

2-6 POWER CONSUMPTION ON POWER SAVING MODE

LOAD	INPUT CONDITION	INPUT POWER REQUIREMENT
0 A	115 VAC 60 Hz	1.2 W maximum
0 A	230 VAC 50 Hz	2.0 W maximum

1. SPECIFICATION

-- 2 / 4

3. OUTPUT REQUIREMENT

3-1	DC OUTPUT VOLTAGE	+ 12 V
3-2	MINIMUM LOAD CURRENT	0 A
3-3	NOMINAL LOAD CURRENT	2.1 A
3-4	NOMINAL OUTPUT POWER	25.2 W
3-5	TOTAL OUTPUT REGULATION	+/-5 %
3-6	LINE REGULATION	+/- 2 %
3-7	RIPPLE AND NOISE	At nominal input voltage and full load
		120 mVp-p maximum
		At 20 MHz, and output parallel with 0.1uF & 10uF capacitors to ground Temperature at 25°C, At nominal input voltage full load.
3-8	EFFICIENCY	75% minimum
		At nominal input voltage and full load
3-9	HOLD-UP TIME	5 mS minimum
		At nominal input AC voltage and full load
3-10	TURN-ON DELAY	3 Seconds maximum
3-11	PROTECTION	
	OVER-CURRENT PROTECTION	4.2 A maximum with auto-recovery function
	OVER-VOLTAGE PROTECTION	19.5 VDC maximum with ZENER clamp
	SHORT-CIRCUIT PROTECTION	The adapter shall not be damaged by short the DC output to Ground.
3-12	REMARK	Unless otherwise specification output load must set at CC mode

4. MECHANICAL REQUIREMENT

4-1 DIMENSION

79 (L) * 55.4 (W) * 58.7(H) mm maximum

4-2 WEIGHT

200 g maximum

4-3 INPUT PLUG TYPE

Wall-mount type, US-pin, EU-pin

4-4 OUTPUT CORD

WIRE: 18AWG/2C, 1828mm

PLUG: JACK PLUG 5.5*2.1*12mm

1.SPECIFICATION

-- 3 / 4

5. ENVIRONMENTAL REQUIREMENT

5-1 COOLING

Cooling shall be with natural convection cooling

5-2 OPERATING TEMPERATURE

0 °C TO 40 °C

5-3 STORAGE TEMPERATURE

-20 °C TO +60 °C

5-4 OPERATING HUMIDITY

20 ~ 85 % RH. NON-CONDENSING

5-5 STORAGE HUMIDITY

5 ~ 95 % RH. NON-CONDENSING

6. SAFETY REQUIREMENT

6-1 DIELECTRIC WITHSTANDING VOLTAGE TEST (HI-POT TEST)

Primary To Secondary: 3000VAC 10mA 1minute or 4242VDC 10mA 1 minute

6-2 LEAKAGE CURRENT

0.25mA maximum, at nominal AC input voltage and frequency

6-3 SAFETY STANDARDS

Designed to meet UL/C-UL(UL60950-1),TUV(EN60950-1)

6-4 EMI STANDARDS

Designed to meet FCC PART15 CLASS B,CE(EN55022)

1.SPECIFICATION

-- 4 / 4

7. RELIABILITY

7-1 MEAN TIME BETWEEN FAILURE (MTBF)

The power supply shall be designed and produced to have a mean time between failures (MTBF) of 50000 operating hours minimum conditions: 80% maximum load at 25°C, nominal input voltage.

Standard: MIL-HDBK-217F

7-2 BURN-IN TEST

4 hours at 40°C maximum, Nominal input voltage, 80% of maximum load.

2. RATING LABEL DRAWING

-- 1 / 1

FROM NO.: 1	COMPUTER NO.	DESCRIPTION	DATE	BY

33.70 mm

29.70 mm

4*R2.0

1:1

NOTE:

- 顏色: 銀底黑字
- 材質: 銀底龍加PVC (UL, CSA APPROVAL)
- 處理: 永久背膠
- 須由UL, CSA合格廠商承制
- 儲存溫度: -20C及+70C之範圍
- 待業務確認安規等各項再行制作生產
- 回形及CE logo高度最小需達5mm

STONTRONICS LTD.

Switching Adaptor

MODEL: DSA-30PF-12

P/N: T3620ST

INPUT: 100-240V~50/60Hz 0.7A

OUTPUT: +12V --- 2.1A

LEVEL 3

FCC E

CE

RoHS

UL

UL LISTED 810J E136966

Made in China

DVE

1.22

0.96

2:1 with a minimum value of 1mm

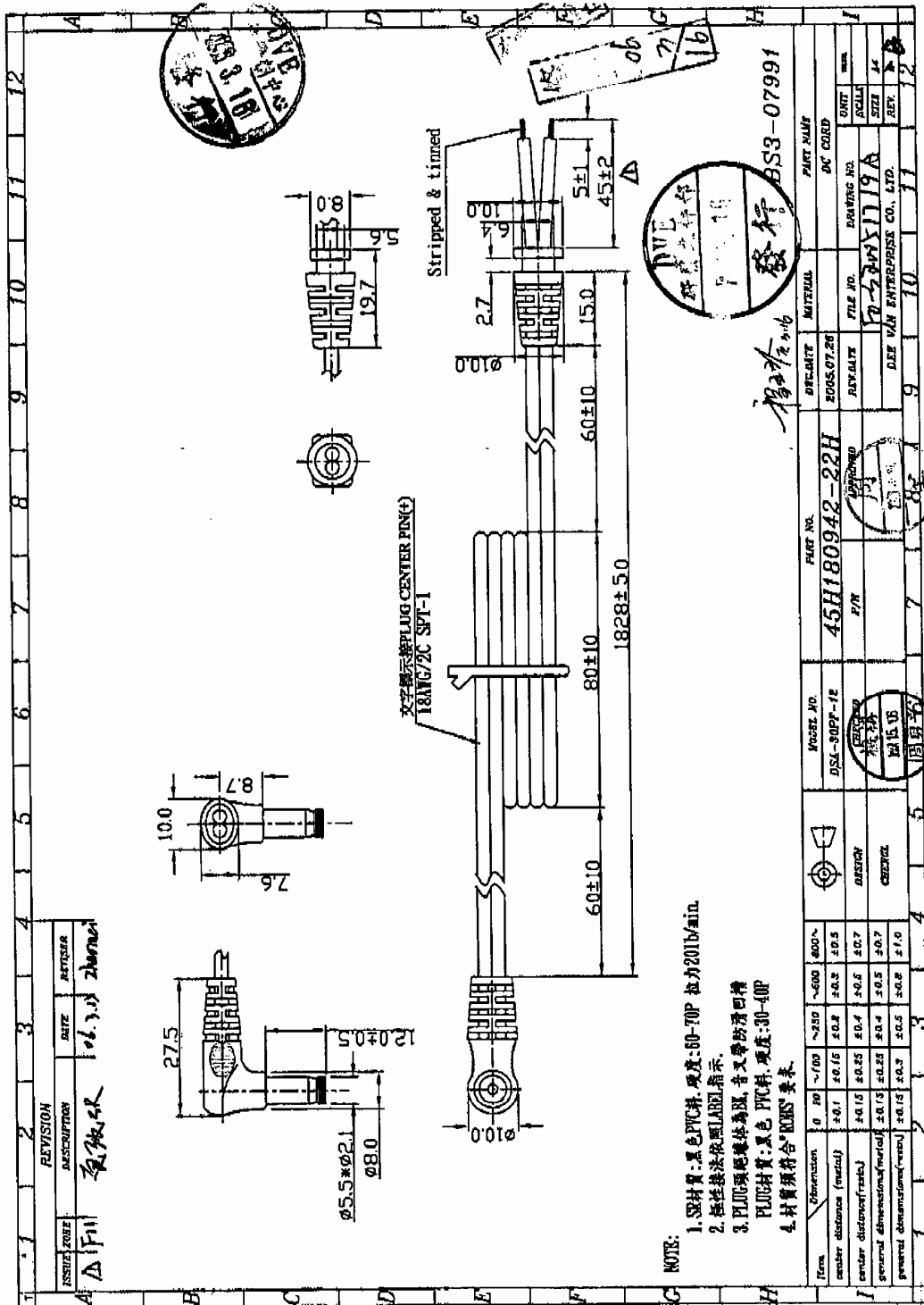
h = 0.3a with a minimum value of 1mm

DEPARTMENT	SCALE	UNIT	TOLERANCE	PART NAME	PART NO.	REV
R&D.SPS	2:1	mm	+0/-0.2	N/P	89P300012-03H	A
ADP				DATE	DRAWING NO.	REV
				2005/07/25	FD-S2005123A	A

MODEL NO: DSA-30PF-12	PAGE 1 OF 1	81	91	70	71	72
-----------------------	-------------	----	----	----	----	----

3. DC OUTPUT CORD DRAWING

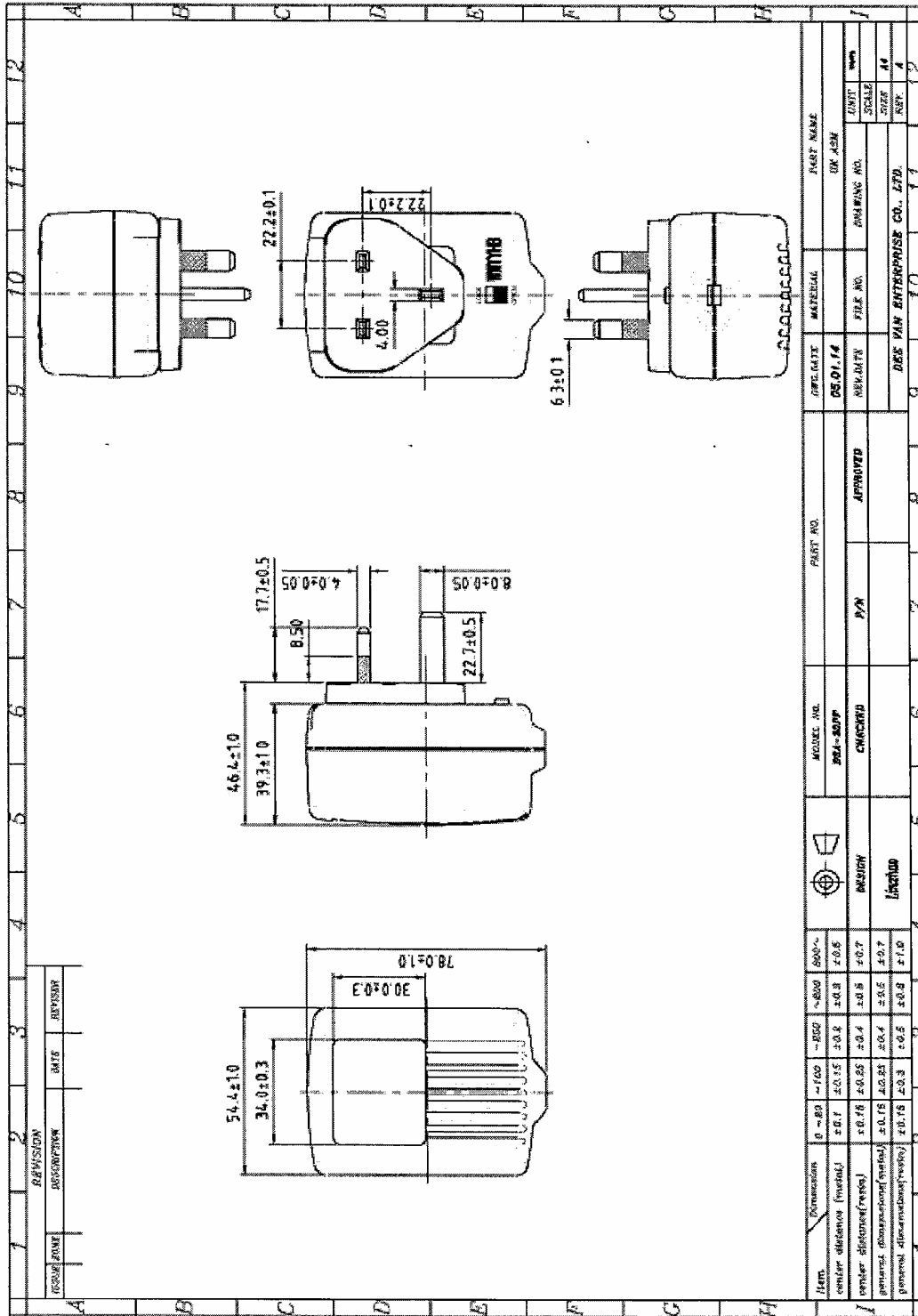
-- 1 / 1



- NOTE:
1. 絕緣材料: 黑色 PVC 料, 硬度: 60-70P 拉力 201N/min.
 2. 絕緣材料: 黑色 PVC 料, 硬度: 30-40P
 3. 絕緣材料: 黑色 PVC 料, 硬度: 30-40P
 4. 材料須符合 ROHS 要求。

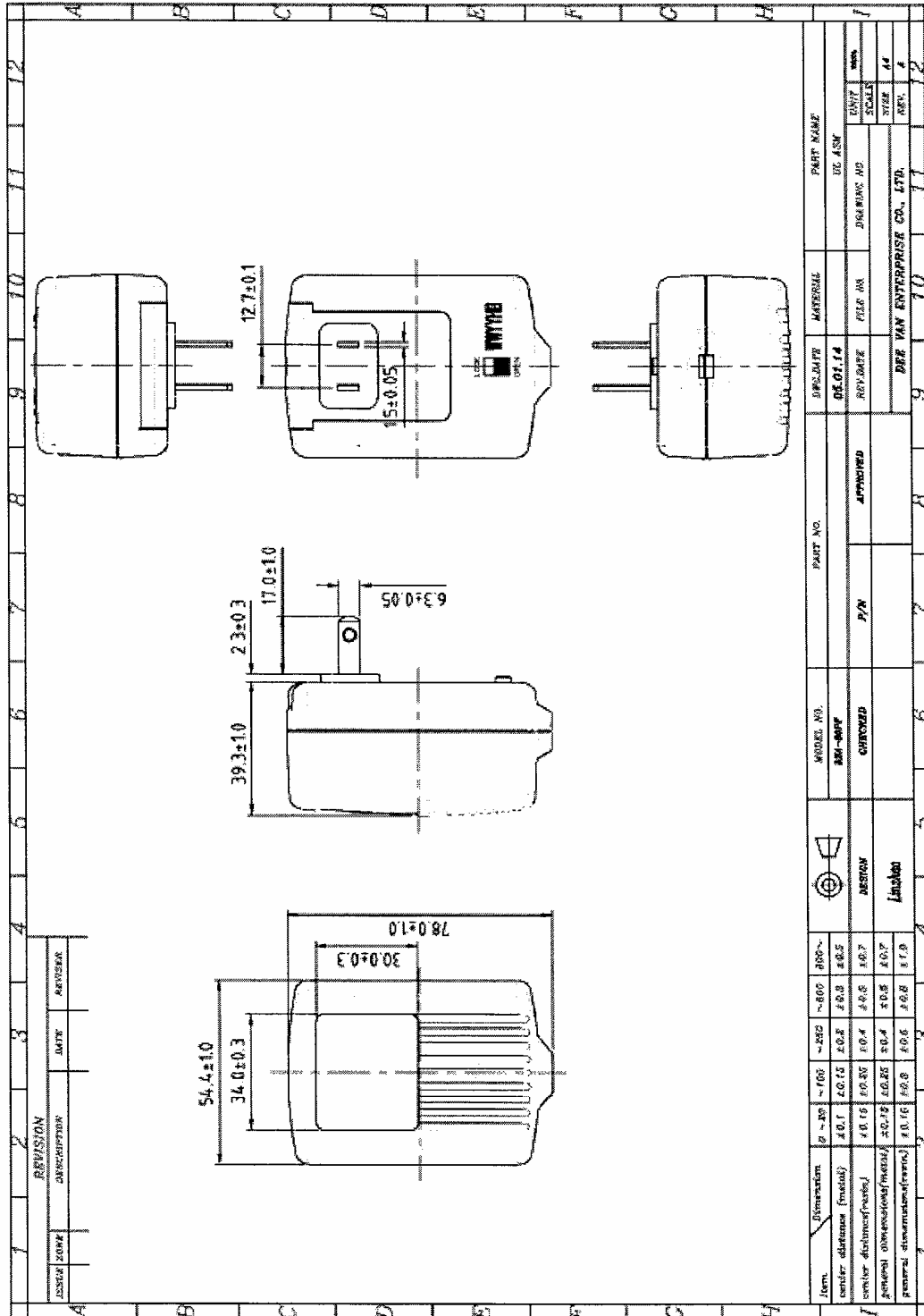
4. PRODUCT OUTLINE DRAWING

-- 1 / 4



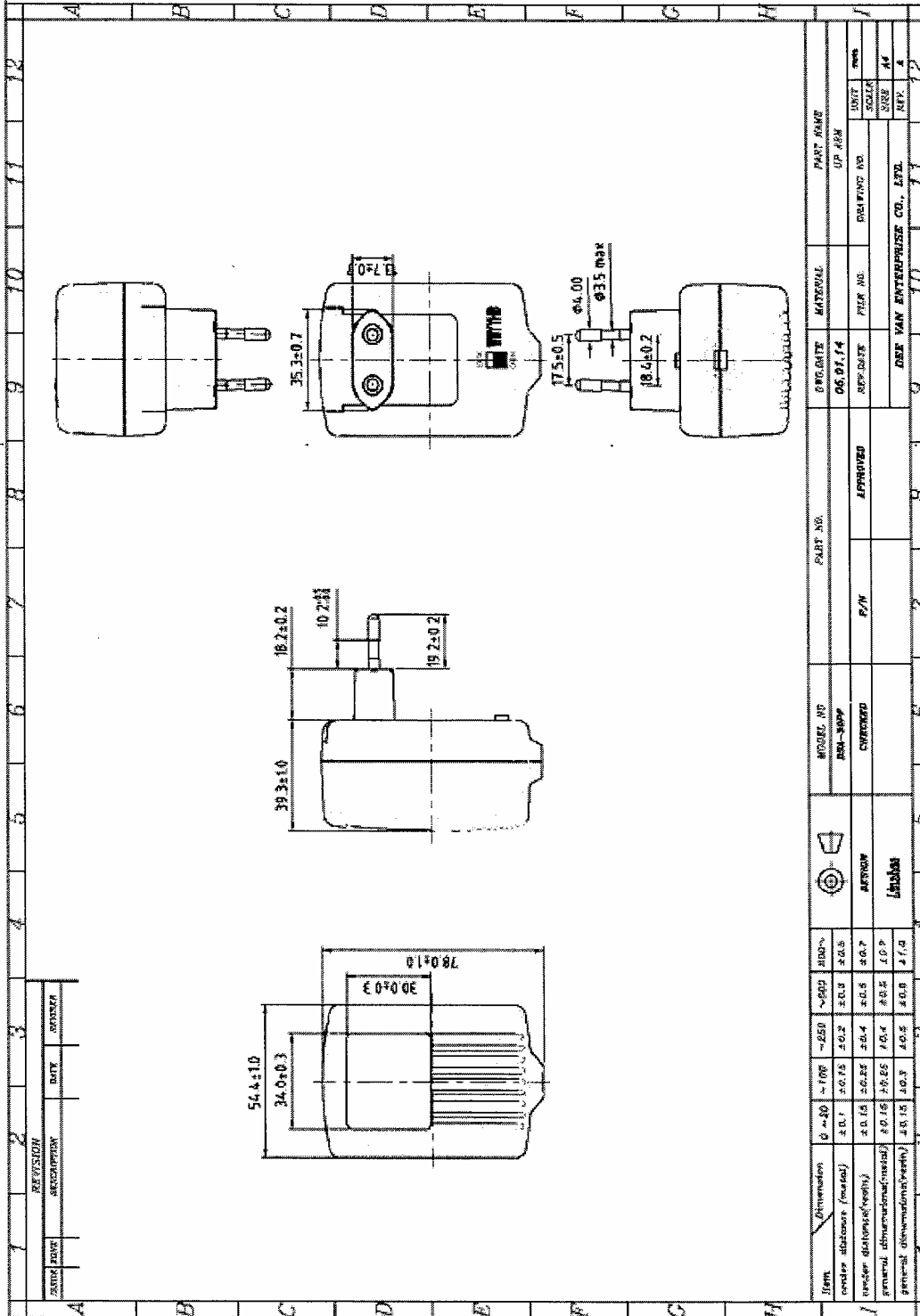
4. PRODUCT OUTLINE DRAWING

-- 2 / 4



4. PRODUCT OUTLINE DRAWING

-- 3 / 4



4. PRODUCT OUTLINE DRAWING

-- 4 / 4

