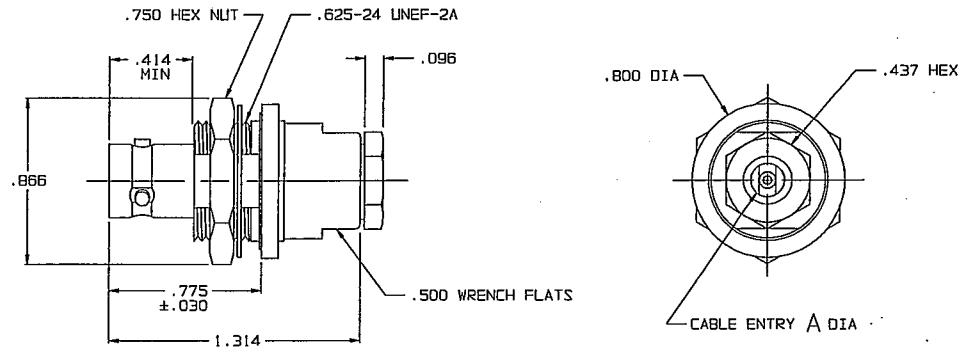


DATA CONTAINED IN THIS DOCUMENT IS PROPRIETARY TO TROMPETER ELECTRONICS, INC. AND SHALL NOT BE DISCLOSED, COPIED OR USED FOR REPRODUCTION OR MANUFACTURE WITHOUT EXPRESS WRITTEN PERMISSION.

REV		ED	DESCRIPTION	OWN	APPROVED	DATE
			REVISIONS	3-0055		SH 1
K	9320		-7, -23, -24A, -26, -32, -33, -42, -43, -56, -57, -59, -60, -65, ASSY INSTRUCTIONS WAS TAI-104;	DKC		5-29-91

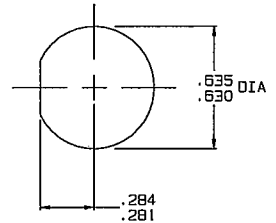
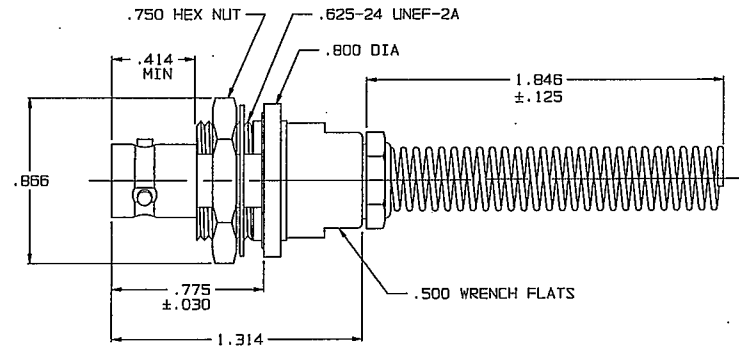
DASH NO	CABLES ACCOMMODATED	ASSEMBLE PER	A DIA
-7	TRC-50-2/TRC-75-2	TAI-189	.274
-9	TWC-78-2/TWC-124-2	TAI-102	.285
-23	250-3884, MICRODOT	TAI-189	.183
-24	202-3934, MICRODOT	TAI-102	.191
-24A	9530A5117, RAYCHEM	TAI-189	.200
-25	GEEIA, GERMANY	TAI-102	.285
-25A	5021H5331, RAYCHEM		.285
-26	7028A5518, RAYCHEM	TAI-189	.183
-27	202-3927, MICRODOT		.145
-29	TWC-78-1/TWC-124-1A	TAI-102	.191
-30	761A, W.E. CO/B441, BELDEN		.235
-32	TRC-50-1		.191
-33	TRC-75-1		.217
-42	21-204, ESSEX 4463, CONSOLIDATED	TAI-189	.300
-43	250-4044/250-4045 293-3930, MICRODOT		.200
-45	M27500-22TE2T14 1100-66F, STANDARD		.183
-47	M17/176-00002	TAI-102	.164
-49	TWAC-78-1F2		.132
-55	89272, BELDEN		.250
-56	GCB75GC1, GRUMMAN	TAI-189	.191
-57	GCB75GB1, GRUMMAN		
-58	GCB75TM24H, GRUMMAN	TAI-102	.198
-59	GCB75LNI, GRUMMAN		
-60	M17/177, THERMATICS 380-10045, BOEING	TAI-189	.217
-64	7528A5314, RAYCHEM		.183

FIG 1 -9 SHOWN



INCH	MM	INCH	MM
.005	0.13	.281	7.14
.030	0.76	.284	7.21
.096	2.44	.285	7.24
.125	3.18	.300	7.62
.132	3.35	.414	10.52
.140	3.56	.437	11.10
.145	3.68	.500	12.70
.164	4.17	.630	16.00
.183	4.65	.635	16.13
.191	4.85	.750	19.05
.198	5.03	.775	19.69
.200	5.08	.800	20.32
.217	5.51	.866	22.00
.235	5.97	1.314	33.38
.274	6.96	1.846	46.89

FIG 2 -9 SHOWN



IF BEND RELIEF SPRING REQUIRED (FIG 2) ADD SUFFIX "BR" TO MODEL NO

- CONCENTRIC TWINAX/TRIAX TRB BULKHEAD MOUNT CABLE RECEPTACLE
- MAX PANEL THK .140
- FINISH: TFS-1A (NICKEL)
- ALL DIM ARE IN INCHES

RECOMMENDED PANEL CUTOUT

QTY	DESCRIPTION		PART NUMBER	ITEM
	TOL UNLESS SPECIFIED .XX ± .XXX ± .005 .XXXX ± ANGLES ±		TROMPETER ELECTRONICS, INC.	BJ74/BJ74BR
305-0534				
305-0522	OWN	DKC	5-13-91	MATERIAL
305-0521	CHK	BM	5-27-91	CODE IDENT
305-045B	ENGR			14949
NEXT ASSY	APPR		5-29-91	DRAWING NO.
				3-0055
				REV
				K
				SCALE 2/1
				DATE 6-26-68
				SHEET 1 OF 2