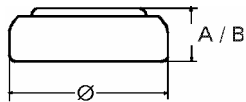


Data Sheet

Type Number 20315
Designation IEC SR 716 SW
System Silver oxide / Zinc / NaOH



Nominal Voltage 1,55 V
Typical Capacity C 23 mAh
 Load 30 kOhm, at 20°C down to 1.2 V

Weight (approx.) 0,33 g
Volume 0,09 ccm
Coding..... Date of Manufacturing Month/Year

Temperature Ranges

| | | |
|-----------------|-------|------|
| | min. | max. |
| Storage | -10°C | 60°C |
| Discharge | -10°C | 60°C |

Dimensions

| | | |
|--------------------|------|------|
| | min | max. |
| Diameter (Ø)..... | 7,75 | 7,90 |
| Height (A/B) | 1,47 | 1,65 |

Segment Watch

Main Applications Watch
 Photo
 Electronic

Typical Capacities (at 20°C)

| Discharge Type | Load | End Voltage: | 1.2 V |
|-------------------------|---------|--------------|-------|
| Continuous 24h/d,7d/ | 30000 Ω | Time: | 400 h |