

nominal voltage: 1,2V
max. charge voltage: 1,5V

capacity
 nominal : 2500mAh
 minimum: 2400mAh
 2250mAh

max. continuous discharge current: 2500mA

charge
 standard charge: charge current 250mA charge time 16hrs at 20°C
 rapid charge: charge current 1250mA charge time 2,2hrs

recommended charge termination control parameters:
 -dV: 0....10mV
 dT/dt: 0,8....1°C per min
 TCO: 45....50°C

trickle charge current: 25....125mA (recommended)

continuous overcharge: ≤ 250mA (less than 1 year) no conspicuous deformation, no leakage

internal resistance: ≤ 30mOhms at 1000Hz, battery fully charged

life expectancy: >500 cycles IEC standard

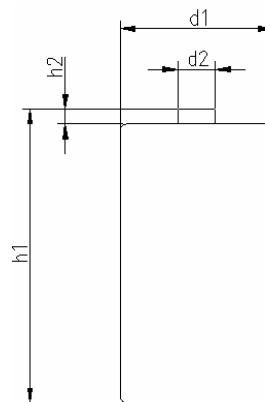
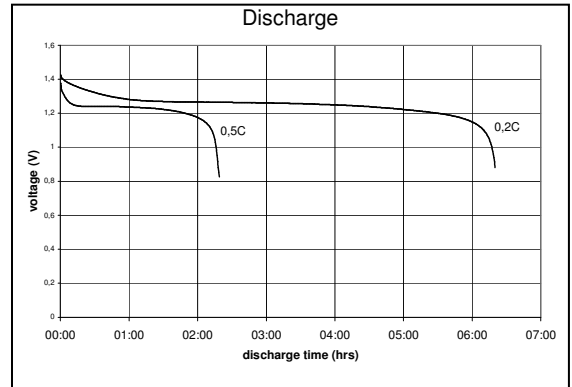
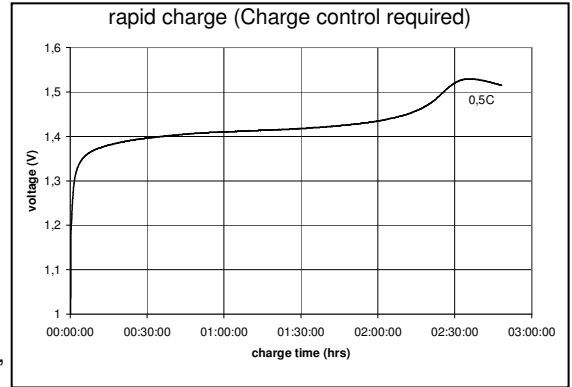
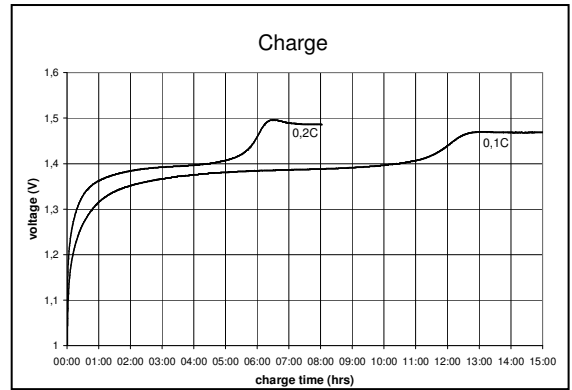
ambient temperature range: 0....45°C
 10....40°C
 -20....60°C
 -20....35°C
 -20....45°C
 standard charge
 rapid charge
 discharge
 storage less than 6 months
 storage less than 1 month

conditions

at standard charge (0,1C / 20°C)

discharge at 0,2C
 discharge at 0,2C
 discharge at 0,5C
 1,0V end discharge voltage
 ambient temperature 20°C

ambient temperature -20....60°C



mechanical specifications
 cell dimensions (with sleeve)
 diameter d1: 25,8 – 1,0mm
 diameter d2: 7,5 - 2,5mm
 height h1: 50,0 - 1,0mm
 height h2: min. 1,5 mm
 weight: approx. 68g

	specifications for model/type:	C – NiMH 2500mAh
	Ansmann drawing number / part number:	2pcs blister 5030912
	author / date:	Gramlich / 25.07.2007