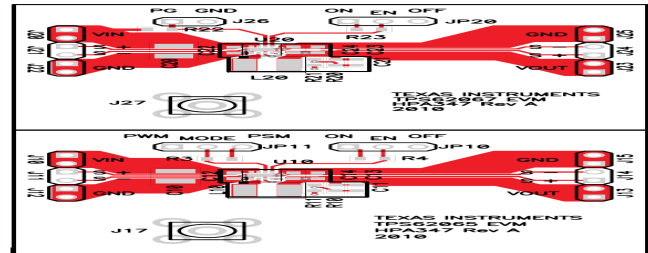


Texas Instruments - TPS62065-67EVM-347 Evaluation Module

Product Overview:

The TPS62065-67EVM-347 is a fully assembled and tested pair of PCBs for evaluating the TPS62065 and TPS62067 2-A step-down converters. The EVM comes configured with both a TPS62065 IC and a TPS62067 IC; there are two PCBs, one for each respective step-down converter IC.



Kit Content:

- Pair of PCBs for evaluating the TPS62065 and TPS62067 2-A step-down converters

Ordering Information:

Products:

Part Number	Manufacturer	Farnell P/N	Newark P/N
TPS62065-67EVM-347	TI	1806057	72R6653

Associated Products:

Part Number	Manufacturer	Description	Support Device	Farnell P/N	Newark P/N
TPS62065DSG	TI	Voltage Regulator IC	TPS62065	1798294	70R1295
TPS62067DSG	TI	Voltage Regulator IC	TPS62067	1798295	70R1296

Similar Products:

Part Number	Manufacturer	Description	Support Device	Farnell P/N	Newark P/N
TPS54260EVM-597	TI	2.5A, 10.8 to 13.2 Vin, SWIFT™ Converter Evaluation Module	TPS54260	NA	72R6645
TPS54240EVM-605	TI	Step-Down SWIFT Converter Eval. Board	TPS54240	1826134	77R3947
TPS40200EVM-001	TI	Wide Input Non-Synchronous Buck DC/DC Controller- EVM	TPS40200	1220982	81K4148

Document List:

Datasheets:

Part Number	Description	Size
TPS62065	3MHz, 2A Step-Down Converter in 2x2 SON Package	1091KB
TPS62067	3MHz, 2A Step-Down Converter in 2x2 SON Package	1091KB

Application Notes:

File Name	Size
350-W, Two Phase Interleaved PFC Pre-Regulator (Rev. B)	478KB
Modeling, Analysis and Compensation of the Current-Mode Converter	198KB
Basic Calculation of a Boost Converter's Power Stage (Rev. B)	190KB
A 300-W, Universal Input, Isolated PFC Power Supply for LCD TV Applications (Rev. B)	858KB