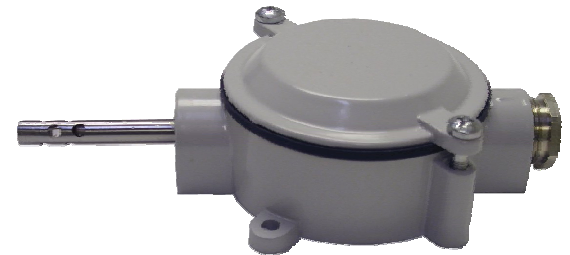


# PTV - External Air Sensor (Fast Response)

**External Air Sensor With Fast Response** - For measurement of temperatures in refrigerated holds, cargo and freeze compartments, or as a general purpose air sensor, etc...,

- Resistance type PT100, Class B, 4 wire (Glass Detector)
- Sheath dimensions are 8 mm dia stainless steel x 50mm in length. This sensor has a perforated tip for fast response
- The connection box is a marine box of grey-enamelled light-alloy metal, protection IP67
- Temp Range : -40°C to +80°C
- Approvals: Lloyd's Register of Shipping



Global Part No.	Description
91-9414-03	External Air Sensor (Fast Response)



