

A (5:1)

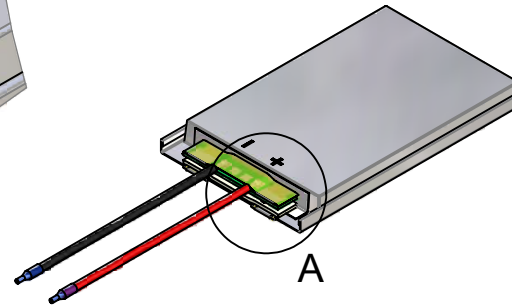
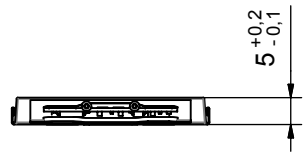
This is a controlled document.
 Hardcopy to be endorsed by authorized person.
 Check with Issuing Office or SAP system for latest update.

60 adhesive tape Kapton 0.05 x 6 x 28

30 double-sided adhesive tape 0.8 mm height

35 adhesive tape Kapton (2x) 0.05 x 6 x 10

90 d/s adhesive tape Nomex 0.18 x 8 x 30

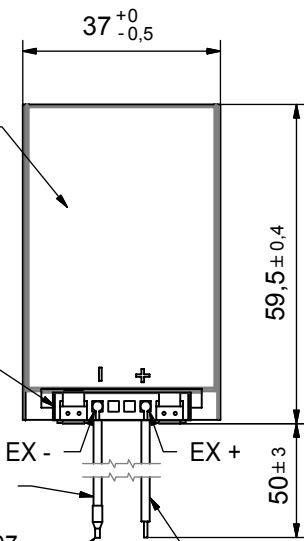


10 PLF503759 C

20 PCM

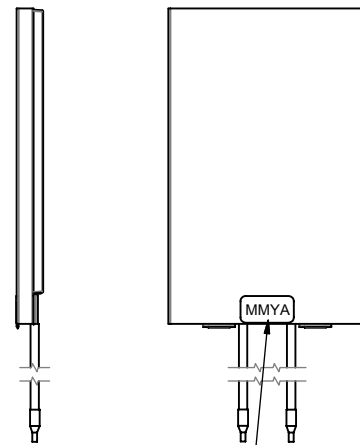
40 wire black (-) AWG24 UL1007

70 sumitube (2x) wire ends to be stripped and tinned, insulated with Sumitube

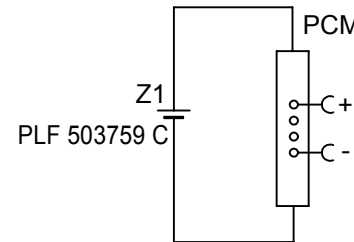


50 wire red (+) AWG24 UL1007

80 label date code



Circuit diagram



Specification

1. General:

PoLiFlex Cell PLF503759C incl. safety circuit and wires
 Weight: appr. 25g
 PCM: PLH 1187-E10

2. Electrical Specification:

Rated Capacity: 1210 mAh min, 1250 mAh typ.
 Nominal Voltage: 3.7 V
 Max. Operating Voltage Range: 2.75V to 4.2V
 Charging Method: Constant Current + Constant Voltage
 Charge Voltage [V] 4.2 (± 50mV)
 Initial Charge Current [mA]: Standard Charge: 605
 Rapid Charge: 1210

Charging Cut-Off [a) or b])

a) by time [h]

Standard Charge: 5
 Rapid Charge: 3

b) by min. Current [mA]:

24

Max. Continuous Discharge Current: 2100 mA (wires)

Internal Impedance (1 kHz): appr. 120 mOhm

Exp. Cycle Life: >500 cycles >70% of initial cap. (0.5C/0.5C)

Cell Protection

Overcharge Detection: 4.325 ± 25 mV
 (0.5 to 2.0 sec. delay, resume 4.075 ± 50 mV)

Overdischarge Detection: 2.50 V ± 80 mV

(62.5 to 250 msec. delay, resume 2.9 V ± 100 mV)

Overcurrent Detection: 3.0 A to 5.5 A (4 to 16 msec. delay)

3. Ambient conditions:

Temperature Range

- Charge: 0 to +45°C

- Discharge: -20 to +60°C

- Charge Retention/Storage [%]: 1 year at -20 to 20°C >80
 3 month at -20 to 45°C >80
 1 month at -20 to 60°C >80

Humidity: 65 ± 20 %RH

4. Safety:

Please follow Handling and Safety Precautions Poliflex

Index	Anänderung / Alteration		Date	Name
05	Cell changed from B to C version		05.12.2007	H.Schnirch
04	Pos. 90 d/s Nomex tape added		16.11.2005	e.richter
03	Specification and dimensions to version B (03) changed		01.03.2005	e.richter
Projection: Diese Maße werden besonders geprüft / This dimensions are considered inspectable Maßstab / Scale: 1:1 (5:1) Material: 66661 111 099 Benennung / Designation: 1/PLF503759 C PCM.LT50 PoLiFlex Zchnng. / Dwg.Nr.: 3 688265 Index: 05 repl.f.: repl.by: Alloc.: VZE10				
Maße in mm / All dimensions in mm		Freimaßtoleranzen / Generaltolerances		Date / Name
Als Betriebsgeheimnis anvertraut, alle Rechte vorbehalten.		up to 6 ± 0.1	Erst./Orig. 20.10.2003 E. Richter	Benennung / Designation
Proprietary data, company confidential, all rights reserved.		over 6 up to 30 ± 0.2	Bearb./Desig. 05.12.2007 H.Schnirch	1/PLF503759 C PCM.LT50 PoLiFlex
		over 30 up to 100 ± 0.3	Gepr./Check. 19.10.2005 R.Keppeler	Zchnng. / Dwg.Nr. 3 688265
		over 100 ± 0.5		Index 05
			Origin:	repl.f.: repl.by: Alloc.: VZE10