

Quick Reference

Search by part #

Check distributor
part inventory

Products

Browse Heat sinks

- By Device -

- By Product Line -

- Attachment Methods -

- Interface Materials -

- Accessories -

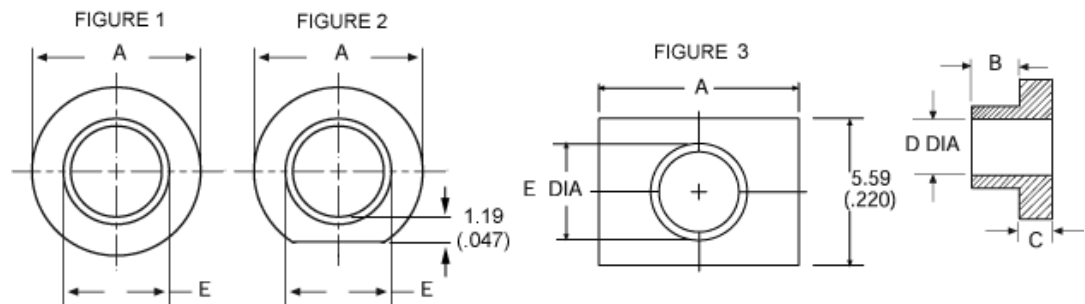
Useful Links

- [Building a part #](#)
- [Catalog Request](#)
- [Directions](#)
- [Find Distributor](#)
- [Find Sales Associate](#)
- [How to order?](#)
- [MSDS Safety Sheets](#)
- [Part # Cross Ref](#)
- [Quote Request](#)
- [RoHS Initiative](#)
- [Sample Request](#)

Insulating Shoulder Washers

RoHS Compliant

- 40% glass filled polyphenylene sulfide (PPS).
- Chemically inert [no known solvents under 200°C (392°F)]
- Maximum recommended service temperature of 260°C (500°F)
- Recommended torque is 0.565Nm to 0.678Nm (5 to 6 inch-pounds) on all shoulder washers except -7, which has recommended torque of 0.452Nm (4 inch-pounds).



Polyphenylene Sulfide PPS Shoulder Washers

Note: A single gate extension, not to exceed 0.64mm (0.025") in length, is allowable on the outside of all shoulder washers.

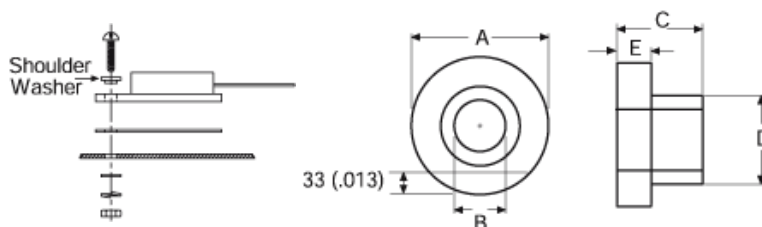
Model	RoHS	PCN	A	B	C	D	E	Screw Size	Fig.
7721-1PPSG	RoHS Compliant	Product Change Notice	7.11 (0.280)	3.18 (0.125)	1.07 (0.042)	2.84 (0.112)	3.81 (0.150)	4	1
7721-3PPSG	RoHS Compliant	Product Change Notice	7.11 (0.280)	3.18 (0.125)	1.07 (0.042)	2.84 (0.112)	3.56 (0.140)	4	1
7721-4PPS	RoHS Compliant	N/A	7.92 (0.312)	.79 (0.081)	1.19 (0.047)	3.71 (0.146)	4.83 (0.190)	6	1
7721-5PPSG	RoHS Compliant	Product Change Notice	7.92 (0.312)	.79 (0.031)	1.19 (0.047)	3.66 (0.144)	4.50 (0.177)	6	1
7721-6PPSG	RoHS Compliant	Product Change Notice	7.11 (0.280)	.79 (0.031)	1.19 (0.047)	3.00 (0.118)	3.68 (0.145)	4	1
7721-7PPSG*	RoHS Compliant	Product Change Notice	5.46 (0.215)	.81 (0.032)	1.02 (0.040)	2.95 (0.116)	3.43 (0.139)	4	1
7721-8PPSG	RoHS Compliant	Product Change Notice	6.22 (0.245)	1.02 (0.040)	1.02 (0.040)	3.02 (0.119)	3.56 (0.140)	4	2
7721-9PPS	RoHS Compliant	N/A	7.62 (0.300)	1.22 (0.048)	1.40 (0.055)	2.97 (0.117)	3.56 (0.140)	4**	3
7721-10PPSG	RoHS Compliant	Product Change Notice	7.62 (0.300)	2.41 (0.095)	1.40 (0.055)	2.97 (0.117)	3.56 (0.140)	4**	3

* Design allows insertion in the tab of a TO-220.

** Also for M3 Screw

Nylon Shoulder Washers

RoHS Compliant



Model	RoHS	PCN	A	B	C	D	E
7721-11NG Formerly Motorola p/n B51547F003	RoHS Compliant	 Product Change Notice	7.80 / 8.05 (0.307 / 0.317)	2.87 / 3.00 (0.113 / 0.118)	3.56 / 3.81 (0.140 / 0.150)	3.76 / 3.89 (1.48 / 1.53)	1.09 / 1.35 (0.043 / 0.053)
7721-12N Formerly Motorola p/n B51547F005	RoHS Compliant	N/A	9.40 / 9.65 (0.370 /.380)	3.84 / 4.09 (0.151 /.161)	2.16 / 2.41 (0.085 /.095)	6.10 / 6.35 (0.240 /.250)	1.02 / 1.27 (0.040 /.050)
7721-13NG Formerly Motorola p/n B51547F011	RoHS Compliant	 Product Change Notice	5.89 / 6.05 (0.232 / 0.238)	2.87 / 3.00 (0.113 / 0.118)	4.11 / 4.45 (0.162 / 0.175)	3.43 / 3.56 (0.135 / 0.140)	1.19 / 1.40 (0.047 / 0.055)
7721-14N Formerly Motorola p/n B51547F018	RoHS Compliant	N/A	6.40 / 6.60 (0.252 /.260)	2.90 / 3.10 (0.114 /.122)	2.69 / 2.90 (0.106 /.114)	3.89 / 4.09 (0.153 /.161)	
7721-15NG Formerly Motorola p/n B51547F019	RoHS Compliant	 Product Change Notice	5.59 / 6.10 (0.220 / 0.240)	2.90 / 2.95 (0.114 / 0.116)	1.73 / 1.91 (0.068 / 0.075)	3.43 / 3.58 (0.135 / 0.141)	.51 / 0.64 (0.020 / 0.025)