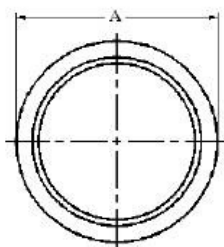
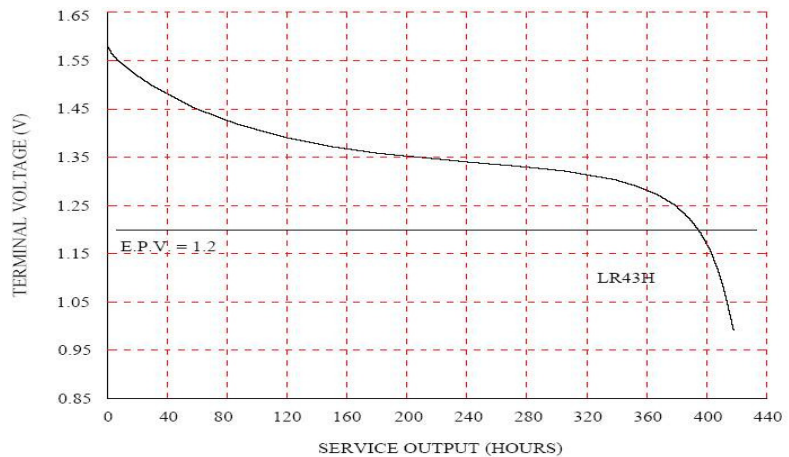


nominal voltage: 1,5V		conditions
off load voltage:	1,55...1,62V	new battery
capacity:		
nominal:	75mAh	continuous discharge at 20 °C under 6,8kohms load, end-point voltage 1,2V
electrical characteristics:		
(new battery)	≥ 1,55V ≥ 1,54V	off load voltage on load voltage, under 6,8Kohms load, measuring time 0,3s
service output:		
	390h 350h	new battery (tested within 30 days after delivery) after 12 months storage at room temperature discharge load 6,8Kohms, daily discharge time 24h, end-point voltage 1,2V
shelf life:		
	12months 90%	after delivery, under proper storage conditions of the capacity will be maintained after 12 months storage
safety characteristics		
short circuit:	no explosion shall be	at 20 °C, short circuit period 24h
chemical system:		Zinc-Manganese Dioxide (Potassium Hydroxide Electrolyte)

discharge diagram:

DISCHARGE METHOD : 6.8kΩ , 24hrs/day
TEMPERATURE : 20 ± 2 °C



Dimensions (in mm) :

Dimensions	Specification
A	∅11.60 ^{+0.00} _{-0.35}
B	3.65 ^{+0.00} _{-0.25}
C	4.2 ^{+0.00} _{-0.4}

weight incl. blister: 2,8g

	specifications for model/type:	Alkaline Button Cell LR43
	Ansmann drawing number / part number:	5015293
	author / date:	Gramlich / 30.01.2008