

Commercial MIL-C-5015

SPECIFICATION

A new range of high reliability, rugged, RoHS-compliant Circular Connectors released by Harwin to meet the high standards of MIL-C-5015, yet priced to be cost-effective for commercial and industrial applications.

Designed for use in harsh and demanding environments, the high specification, cadmium- and hexavalent chromium-free range features free plug, panel mount and cable connector orientations in a number of popular shell and layout options.

Markets

Commercial MIL-C-5015 meets the demanding needs of the following;

- ❖ Mass transit
- ❖ Robotics
- ❖ Machine tools
- ❖ Welding equipment
- ❖ COTS applications where MIL Spec is not mandatory

Materials

Outer Shell:	Aluminium Alloy, Zinc with Black Chromate finish
Inner Contacts:	Copper Alloy, Silver finish
Insulator, Grommet:	Polychloroprene

Electrical

Current Rating:	13A
Voltage Rating:	500V AC, 700V DC
Voltage proof:	2,000V AC
Insulation Resistance:	5,000 Megohms min

Features

- ❖ Intermateable with MIL-C-5015
- ❖ Low cost, highly durable & rugged connector system
- ❖ Solder termination
- ❖ Full environmental sealing with the use of backshells and sealing gaskets, exceeds IP-67
- ❖ Threaded and polarised coupling
- ❖ Zinc & Black Chromate-plated shells

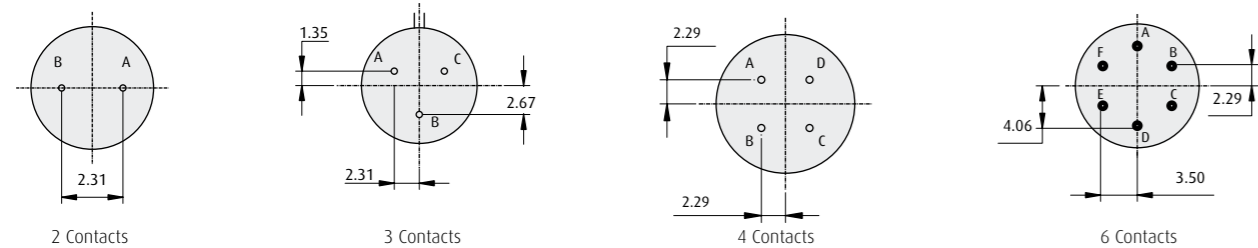
Environmental

Operating Temperature:	-55°C to +125°C
Vibration sensitivity:	10Hz to 500Hz, 98mm/s ² (10G)
Shock severity:	490m/s ² (50G) for 11ms
Water Resistance (sealing):	1.8m for 48 hours – exceeds IP67

Mechanical

Durability:	500 operations
Wire size:	16 to 22 AWG

CONTACT CONFIGURATION



All dimensions in mm.

www.harwin.com

HARWIN

Harwin North America

7A Raymond Avenue, Unit 7,
Salem, New Hampshire
NH03079, USA.
Email: misboston@harwin.com
Tel: (1) 603 893 5376
Fax: (1) 603 893 5396

Harwin Europe

Fitzherbert Road, Farlington
Portsmouth, Hants. PO6 1RT, UK.
Email: mis@harwin.co.uk
Tel: +44 (0) 23 9231 4545
Fax: +44 (0) 23 9231 4590

Harwin Germany

Email: wpohl@harwin.com
Tel: +49 (0) 89 379 19 400
Fax: +49 (0) 89 379 19 401

Harwin Asia

Block 71, Ayer Rajah Crescent,
#04-01/02 Rajah Ind. Est.
Singapore 139951.
Email: mis@harwin.com.sg
Tel: +65 6 779 4909
Fax: +65 6 779 3868

HARWIN

INTERCONNECT DESIGN & MANUFACTURE



Commercial MIL-C-5015
RoHS Compliant Circular Connectors

www.harwin.com

www.harwin.com



HARWIN



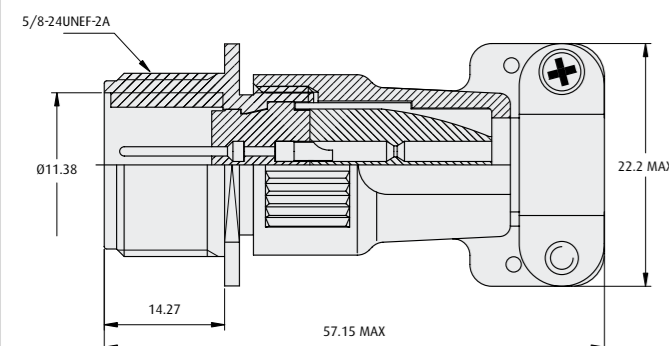
Commercial MIL-C-5015

Cable Connectors, Receptacle Style

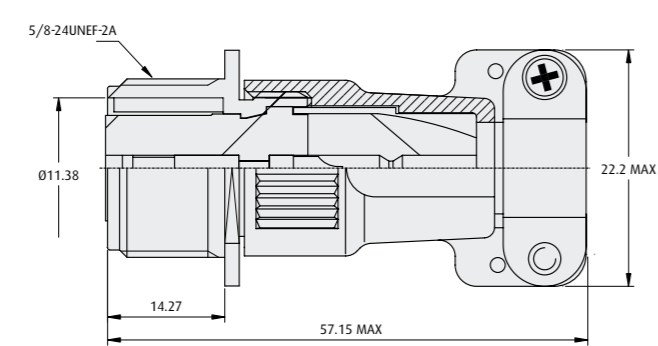
- Male & Female Circular Connectors intermateable with MIL-C-5015
- Cable assembly service available
- Small & large shell sizes
- Exceeds IP-67



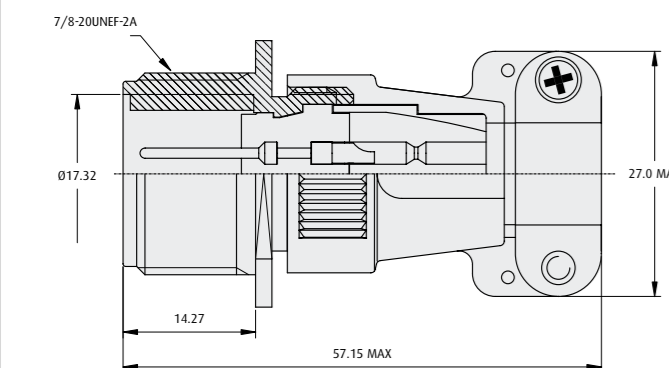
MALE, SMALL SHELL



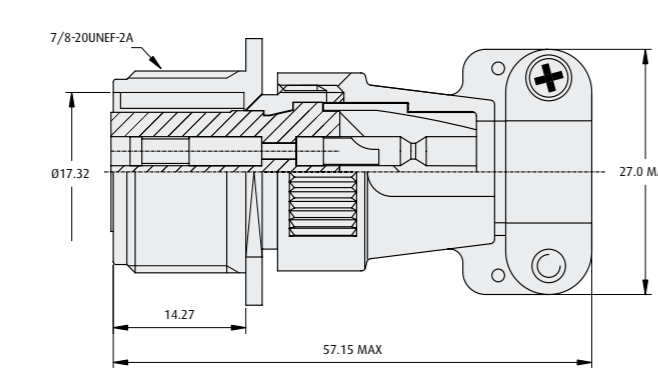
FEMALE, SMALL SHELL



MALE, LARGE SHELL



FEMALE, LARGE SHELL



HOW TO ORDER

M90 - 3101F XXXX-X X

SERIES CODE

TYPE

SHELL SIZE, TOTAL NO. OF CONTACTS

10SL-3	Small Shell, 3 contacts
10SL-4	Small Shell, 2 contacts
14S-2	Large Shell, 4 contacts
14S-6	Large Shell, 6 contacts

GENDER

P	Male
S	Female

All dimensions in mm.

www.harwin.com



HARWIN

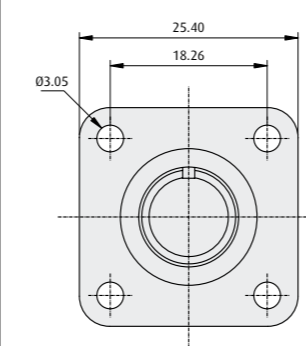
Commercial MIL-C-5015

Panel Mount Connector, Receptacle Style

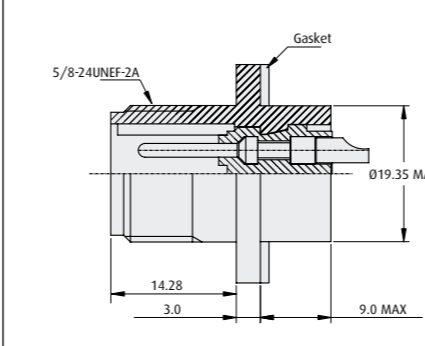
- Male & Female Circular Connectors intermateable with MIL-C-5015
- Features screw holes for panel mounting
- Gaskets provide additional sealing
- 13A power



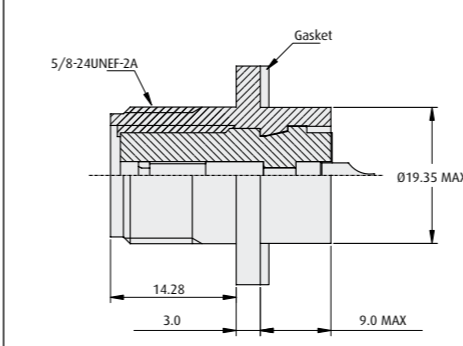
SMALL SHELL



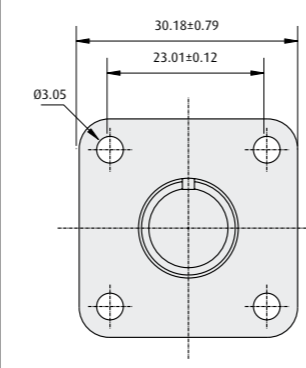
MALE



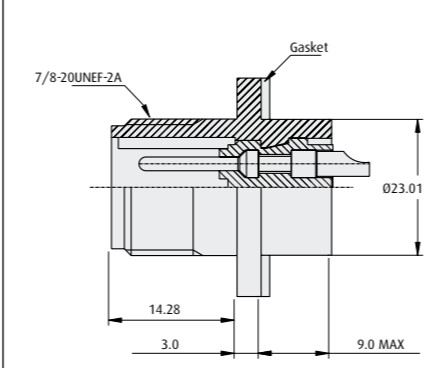
FEMALE



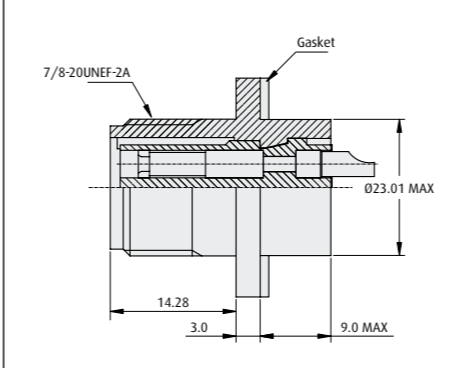
LARGE SHELL



MALE



FEMALE



HOW TO ORDER

M90 - 3102R XXXX-X X

SERIES CODE

TYPE

SHELL SIZE, TOTAL NO. OF CONTACTS

10SL-3	Small Shell, 3 contacts
10SL-4	Small Shell, 2 contacts
14S-2	Large Shell, 4 contacts
14S-6	Large Shell, 6 contacts

GENDER

P	Male
S	Female

All dimensions in mm.

www.harwin.com



HARWIN

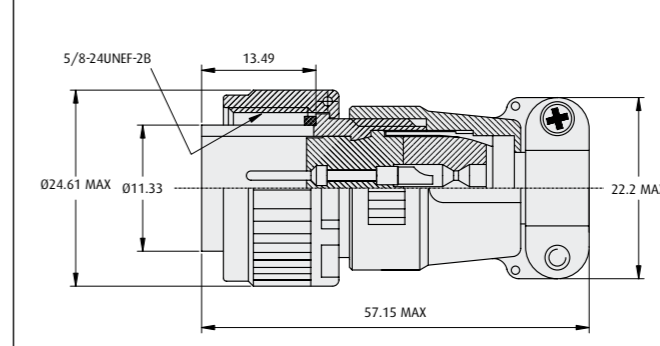
Commercial MIL-C-5015

Cable Connector, Plug Style

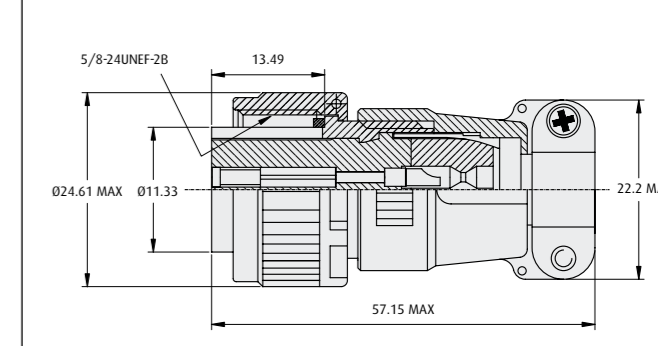
- Male & Female Circular Connectors intermateable with MIL-C-5015
- Rugged connector system for harsh environments
- Cable assembly service available



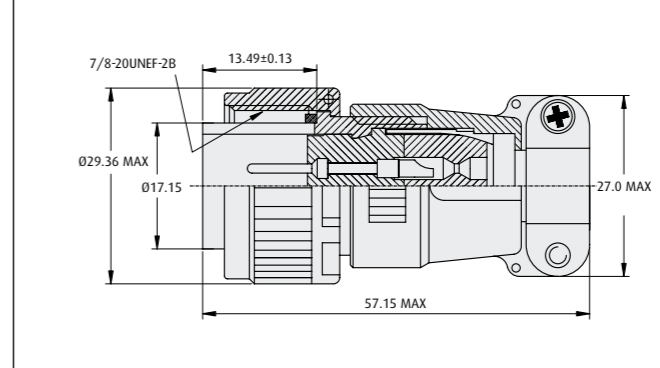
MALE, SMALL SHELL



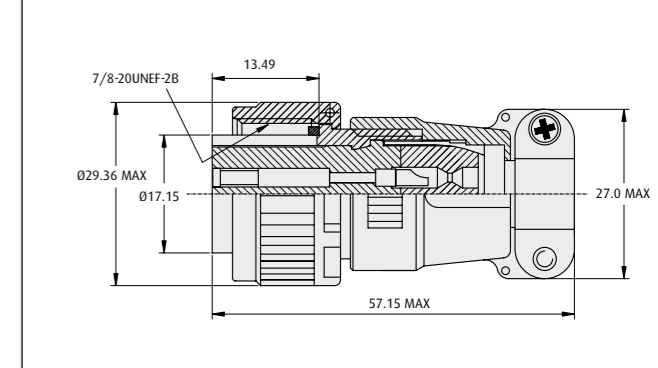
FEMALE, SMALL SHELL



MALE, LARGE SHELL



FEMALE, LARGE SHELL



HOW TO ORDER

M90 - 3106F XXXX-X X

SERIES CODE

TYPE

SHELL SIZE, TOTAL NO. OF CONTACTS

10SL-3	Small Shell, 3 contacts
10SL-4	Small Shell, 2 contacts
14S-2	Large Shell, 4 contacts
14S-6	Large Shell, 6 contacts

GENDER

P	Male
S	Female

All dimensions in mm.

www.harwin.com



HARWIN