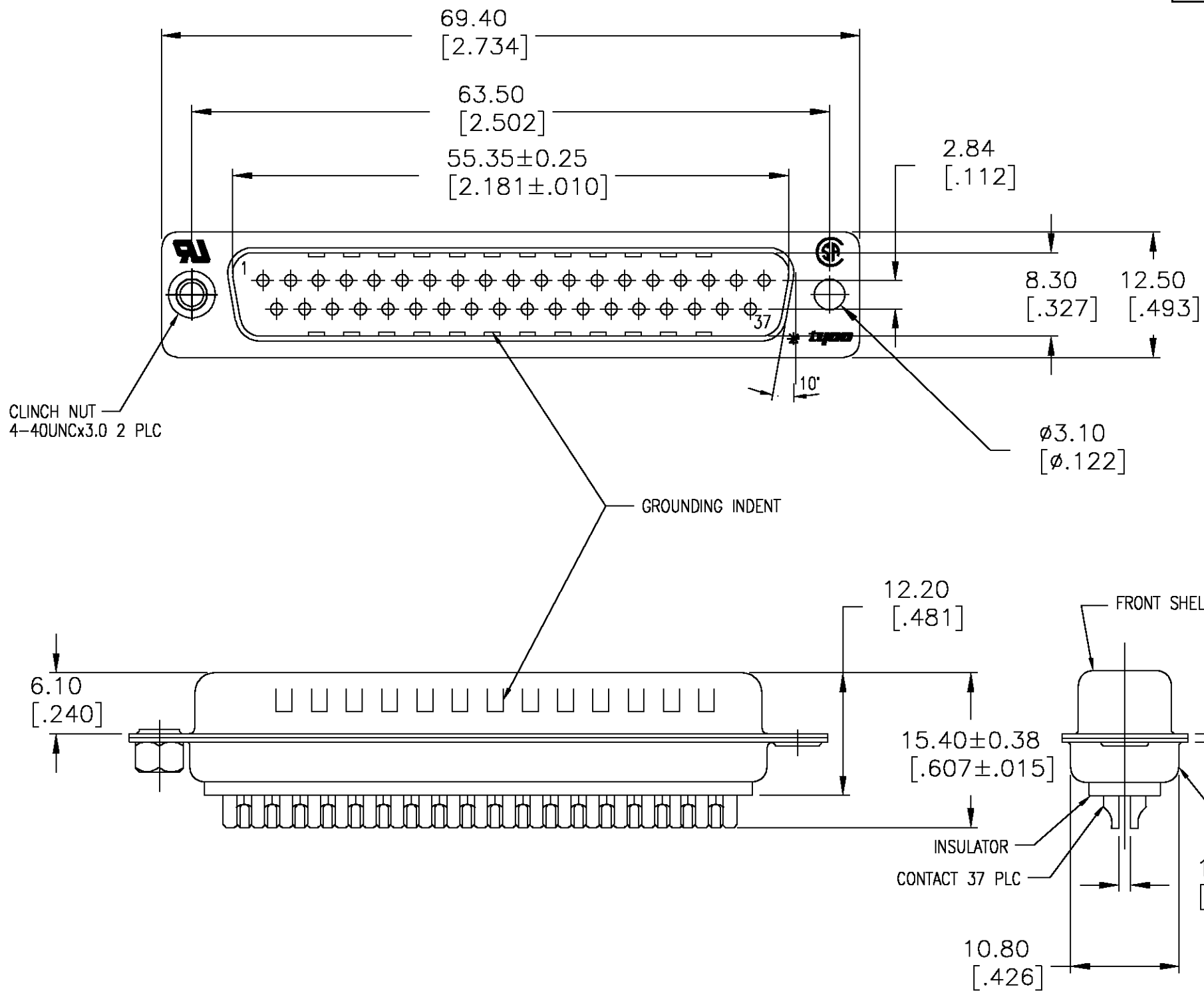


THIS DRAWING IS UNPUBLISHED. RELEASED FOR PUBLICATION  
 © COPYRIGHT BY TYCO ELECTRONICS CORPORATION. ALL RIGHTS RESERVED.

LOC	DIST	REVISIONS					
AD	0	P	LTR	DESCRIPTION	DATE	DWN	APVD
			L	REV PER EC 0G3C-407-03	11DEC03	MB	JO



- NOTES :
- MATERIAL  
 FRONT INSULATOR: PBT,30%GF,UL94V-0, BLACK COLOR  
 BACK INSULATOR: PBT,30%GF,UL94V-0, BLACK COLOR  
 CONTACT: BRASS  
 FRONT SHELL: STEEL  
 BACK SHELL: STEEL  
 CLINCH NUTS: BRASS
  - FINISH  
 CONTACT: GOLD PLATING 0.02µm MIN ON CONTACT AREA/TIN-LEAD PLATING 0.0023µm MIN.  
 CONTACT: GOLD PLATING 0.762µm MIN ON CONTACT AREA/TIN-LEAD PLATING 0.0023µm MIN.  
 SHELL: TIN FULL SHELL, 0.76µm MIN  
 SHELL: ZINC FULL SHELL 7.62µm MIN  
 CLINCH NUTS: 3.05-5.08µm NICKEL  
 CONTACT: GOLD PLATING 0.8µ" MIN ON CONTACT AREA/TIN PLATING 0.0023µm MIN
  - SPECIFICATION  
 ELECTRICAL CHARACTERISTICS:  
 CURRENT RATING: 3 AMPERES  
 DIELECTRIC WITHSTANDING VOLTAGE: AC 1000V r.m.s  
 INSULATION RESISTANCE: 5000 MEGOHMS MINIMUM AT DC 500V  
 CONTACT RESISTANCE: 10 MILLIOHMS MAXIMUM.
  - PRELIMINARY PART
  - PLUG ASSEMBLY MATES WITH ANY 25 POSITION RECEPTACLE IN AMPLIMITE SERIES
  - SOLDER CUP WILL ACCOMMODATE 20 MAX AWG WIRE.
  - LEAD FREE PART

STANDARD	NO	YES	7	4	747916-7
STANDARD	YES	YES	2	4	747916-6
STANDARD	NO	YES	3	4	747916-5
STANDARD	NO	NO	2	5	747916-4
STANDARD	NO	YES	2	4	747916-2
PACKAGING TYPE	CLINCH NUTS	GROUNDING INDENTS	CONTACTS	SHELLS	PART NO

THIS DRAWING IS A CONTROLLED DOCUMENT.		DWN	M.BINNER	04MAR03	<b>tyco</b> Electronics	Tyco Electronics Corporation	
		CHK	R.BENDORF	05MAR03		Harrisburg, Pa 17105-3608	
DIMENSIONS: mm [INCHES]		TOLERANCES UNLESS OTHERWISE SPECIFIED:		APVD	R.BENDORF	05MAR03	NAME
0 PLC ± -		1 PLC ± 0.25		PRODUCT SPEC		PLUG ASSEMBLY, SOLDER CUP, SIZE 4, 37 POSN, HD-20, AMPLIMITE	
2 PLC ± 0.13		3 PLC ± 0.05		APPLICATION SPEC		-	
4 PLC ± -		ANGLES ± 4'		WEIGHT		-	
MATERIAL SEE NOTES		FINISH SEE TABLE		SIZE		CAGE CODE	DRAWING NO
				A3		00779	C-747916
				CUSTOMER DRAWING		SCALE	1:1
						SHEET	1 OF 1
						REV	L