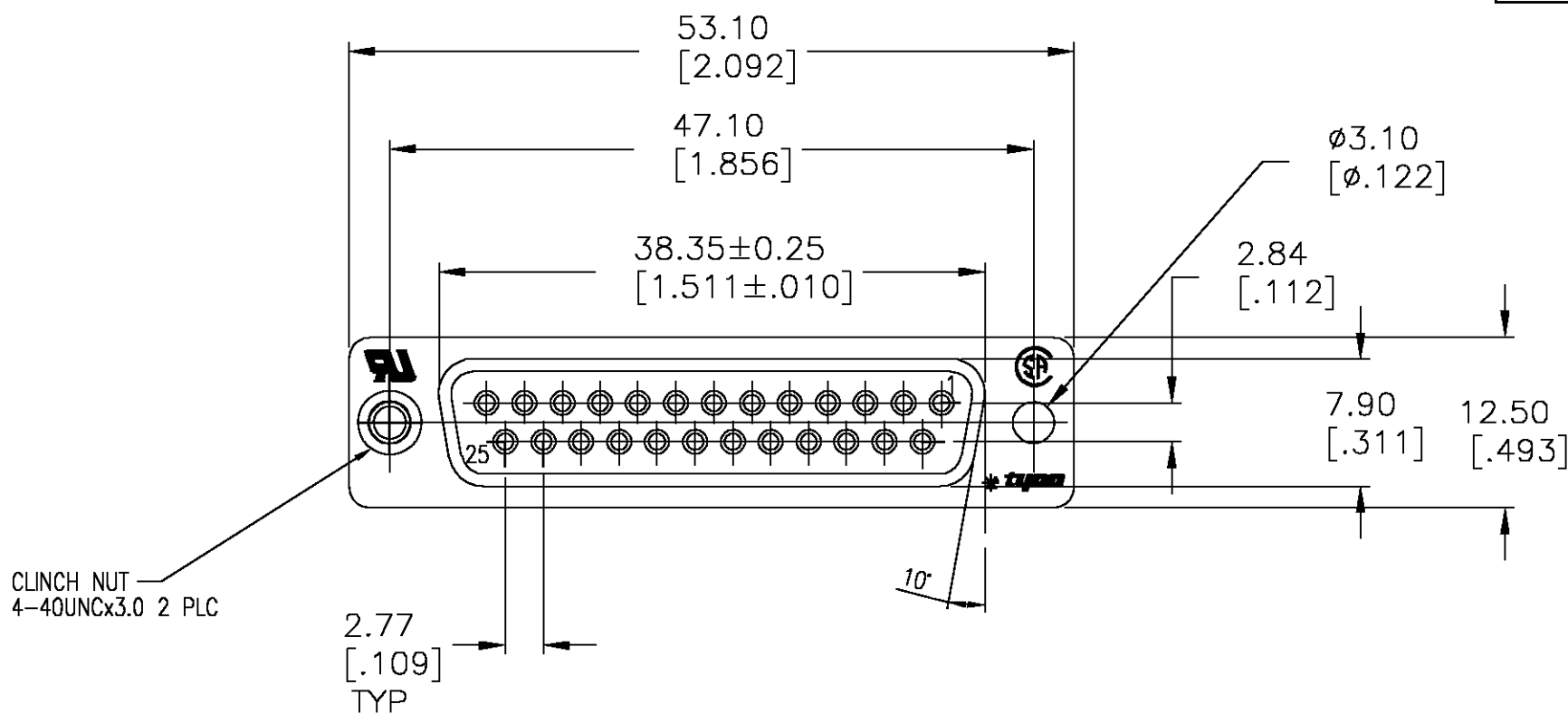
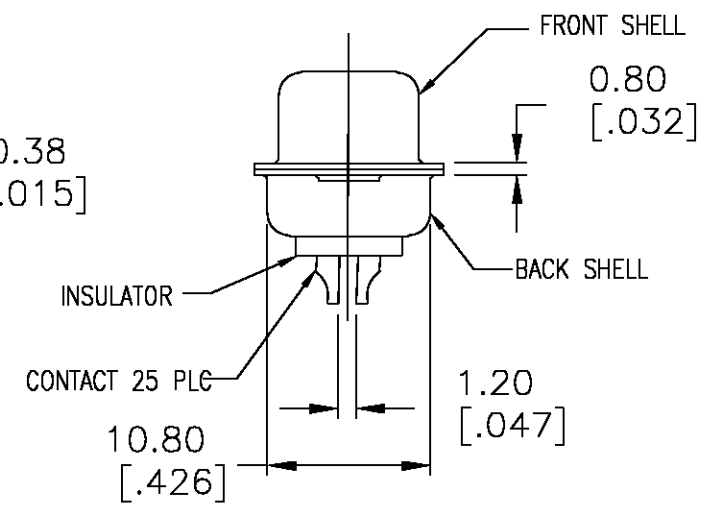
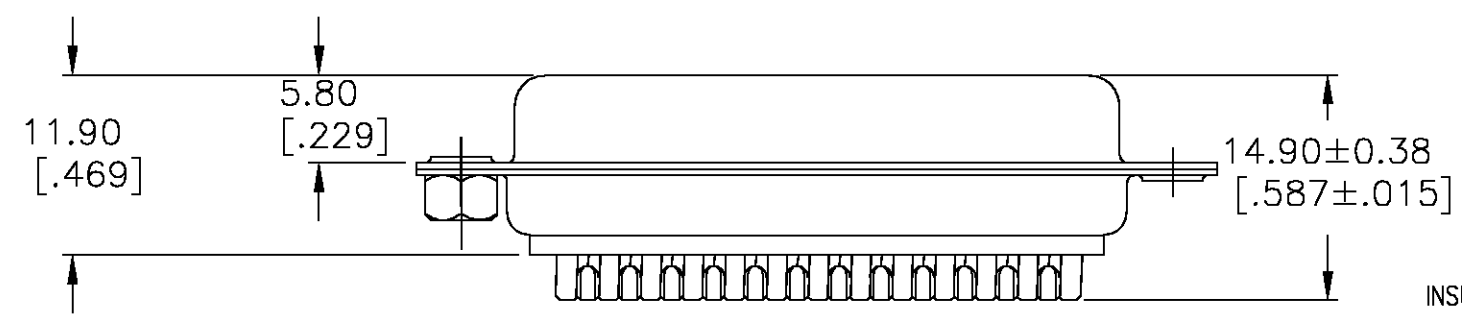


THIS DRAWING IS UNPUBLISHED. RELEASED FOR PUBLICATION  
 © COPYRIGHT BY TYCO ELECTRONICS CORPORATION. ALL RIGHTS RESERVED.

LOC	DIST	REVISIONS					
AD	00	P	LTR	DESCRIPTION	DATE	DWN	APVD
		M		REV PER EC OG3C-407-03	11DEC03	MB	JO



- NOTES :
- MATERIAL  
 FRONT INSULATOR: PBT,30%GF,UL94V-0, BLACK COLOR  
 BACK INSULATOR: PBT,30%GF,UL94V-0, BLACK COLOR  
 CONTACT: BRASS  
 FRONT SHELL: STEEL  
 BACK SHELL: STEEL  
 CLINCH NUTS: BRASS
  - FINISH  
 2 CONTACT: GOLD PLATING 0.02µm MIN ON CONTACT AREA/TIN-LEAD PLATING 0.0023µm MIN.  
 3 CONTACT: GOLD PLATING 0.762µm MIN ON CONTACT AREA/TIN-LEAD PLATING 0.0023µm MIN  
 4 SHELL: TIN FULL SHELL, 0.76µm MIN  
 5 SHELL: ZINC FULL SHELL 7.62µm MIN  
 6 CLINCH NUTS: 3.05-5.08µm NICKEL  
 7 CONTACT: GOLD PLATING 0.8µm MIN ON CONTACT AREA/TIN PLATING 0.0023µm MIN
  - SPECIFICATION  
 ELECTRICAL CHARACTERISTICS:  
 CURRENT RATING: 3 AMPERES  
 DIELECTRIC WITHSTANDING VOLTAGE: AC 1000V r.m.s  
 INSULATION RESISTANCE: 5000 MEGOHMS MINIMUM AT DC 500V  
 CONTACT RESISTANCE: 10 MILLIOHMS MAXIMUM.
  - LEAD FREE PART
  - RECEPTACLE ASSEMBLY MATES WITH ANY 25 POSITION PLUG IN AMPLIMITE SERIES
  - SOLDER CUP WILL ACCOMMODATE 20 MAX AWG WIRE.



YES	STANDARD	2	4	747913-9
NO	STANDARD	7	4	747913-8
NO	STANDARD	2	4	747913-6
NO	STANDARD	3	4	747913-5
NO	STANDARD	2	5	747913-4
NO	STANDARD	2	4	747913-2
CLINCH NUTS	PACKAGING TYPE	CONTACTS	SHELLS	PART NO

THIS DRAWING IS A CONTROLLED DOCUMENT.		DWN	M.BINNER	04MAR03	<b>tyco</b> <b>Electronics</b>	Tyco Electronics Corporation Harrisburg, Pa 17105-3608		
DIMENSIONS: mm [INCHES]		CHK	R.BENDORF	05MAR03		NAME RECEPTACLE ASSEMBLY, SOLDER CUP, SIZE 3, 25 POSN, HD-20, AMPLIMITE		
TOLERANCES UNLESS OTHERWISE SPECIFIED:		APVD	R.BENDORF	05MAR03	PRODUCT SPEC			
0 PLC ± -		APPLICATION SPEC		SIZE		CAGE CODE	DRAWING NO	RESTRICTED TO
1 PLC ± 0.25		-		A3		00779	C=747913	-
2 PLC ± 0.13		-		CUSTOMER DRAWING		SCALE	SHEET	REV
3 PLC ± 0.05		-		-		1:1	1 OF 1	M
4 PLC ± -		-		-		-		
ANGLES ± 4°		-		-		-		
MATERIAL SEE NOTES		FINISH SEE TABLE		-		-		