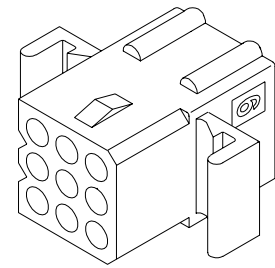
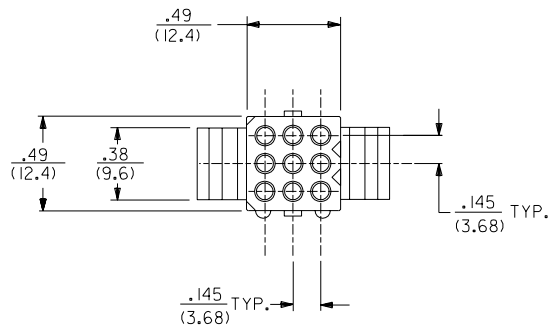
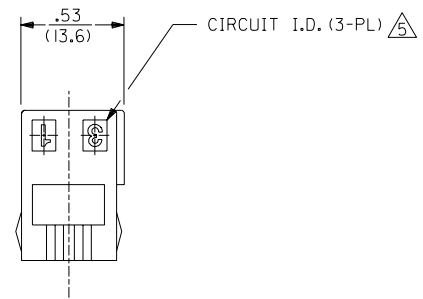
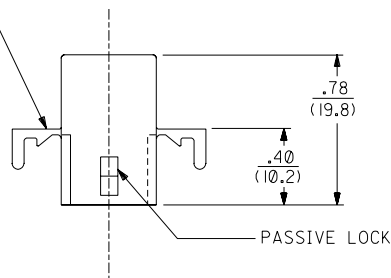


OPTIONAL MOUNTING EARS  
SEE DETAIL 3 OR 4  
FOR VERSIONS AVAILABLE



RECEPTACLE

1625-9

LTR.	REVISIONS	LTR.	REVISIONS

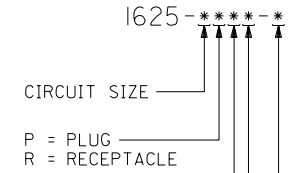
DIMENSIONS SHOWN (METRIC) INCH	
UNLESS OTHERWISE SPECIFIED TOLERANCES: ANGULAR ± 1/2°	
3 PLACE ± .010	---
2 PLACE ± .014	± 0.25
1 PLACE ---	± 0.36
DRAFT WHERE APPLICABLE MUST REMAIN WITHIN DIMENSIONS	
DRWG. BY JJS	CHK'D. BY RW
APP'D. BY RAS	SCALE 2:1

▽ = 0	▼ = 0	REVISE ONLY ON CAD SYSTEM	
TITLE .062/(1.57)HOUSINGS PLUG & RECEPTACLE 9 CIRCUIT, .145/(3.68) CTRS.			
MOLEX LITSE,ILL.	60532	SHEET NO. 2	DATE 2 / 5 / 88
PART NO. SEE CHART		DRWG. NO. SD-1625-9*	
FILE NAME S1625SK2		THIS DRAWING CONTAINS INFORMATION THAT IS PROPRIETARY TO MOLEX INC. AND SHOULD NOT BE USED WITHOUT WRITTEN PERMISSION	
CP	C	CP	C

PLUG	
PART NO.	ENG. NO.
03-06-2091	1625-9P
03-06-2092	1625-9P1
23-06-2091	1625-9P-C
23-06-2092	1625-9P1-C
04-06-6091	1625-9P1-B
03-06-7091	1625-9PBK
03-06-7092	1625-9P1BK
	OBSOLETE

RECEPTACLE	
PART NO.	ENG. NO.
03-06-1091	1625-9R
03-06-1092	1625-9R1
23-06-1091	1625-9R-C
23-06-1092	1625-9R1-C
03-06-6091	1625-9RBK
03-06-6092	1625-9R1BK
	OBSOLETE

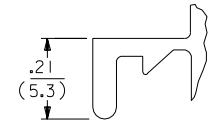
**LEGEND:**



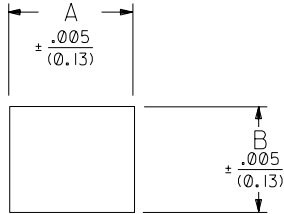
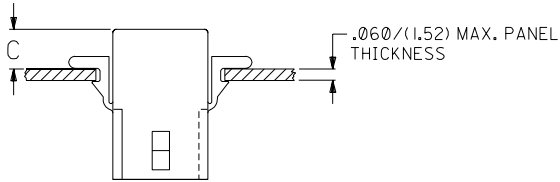
MOUNTING EAR & DETENT COMBINATIONS:  
 BLANK=PLUG OR RECEPTACLE WITH STANDARD EARS  
 1=PLUG OR RECEPTACLE WITHOUT EARS  
 4=PLUG OR RECEPTACLE WITH PREBENT EARS

BLANK = NATURAL COLOR  
 AM = AMBER BK = BLACK BU = BLUE  
 BN = BROWN CY = GRAY GN = GREEN  
 OR = ORANGE RD = RED YW = YELLOW

MATERIAL: A= MATERIAL CODE A  
 B= MATERIAL CODE B  
 C= MATERIAL CODE C



**DETAIL 3**  
 STANDARD MOUNTING EAR  
 (SCALE 4:1)

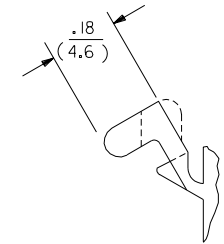
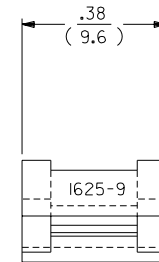


RECEP.	.650 (16.51)	.552 (14.02)	.21 (5.3)	.22 (5.6)
PLUG	.752 (19.10)	.615 (15.62)	.20 (5.1)	.21 (5.3)
PART	DIM. A	DIM. B	DIM. C (STANDARD EAR)	DIM. C (PREBENT EAR)

**RECOMMENDED HOLE PATTERN**

**NOTES:**

- MATERIAL CODES:  
 A-NYLON TYPE 6/6, 94V-2  
 B-NYLON TYPE 6/6, 94V-0  
 C-POLYPROPYLENE, 94V-0
- THIS PRODUCT COMPLIES WITH MOLEX PRODUCT SPEC PS-02-06.
- HOUSINGS FOR USE WITH MOLEX .062 DIA. TERMINALS.
- SOME PARTS MAY HAVE THIS CORNER CHAMFERED.
- CIRCUIT I.D. NUMBERS APPEAR ONLY ON TOOLS BUILT AFTER 11/1/92.



**DETAIL 4**  
 PREBENT MOUNTING EAR  
 (SCALE 4:1)

Q	SEE SHEET 1	DIMENSIONS SHOWN (METRIC) INCH	▽ = 0	▼ = 0	REVISE ONLY ON CAD SYSTEM
P	SEE SHT. 1	UNLESS OTHERWISE SPECIFIED TOLERANCES: ANGULAR ± .030	TITLE		
OI	SEE SHT. 1	INCH METRIC	.062/(1.57) HOUSINGS PLUG & RECEPTACLE		
O	SEE SHT. 1	5 PLACE ± .010 ---	9 CIRCUIT, .145/(3.68) CTRS		
N	SEE SHT. 1	2 PLACE ± .014 ± 0.25	MOLEX INCORPORATED		
M	SEE SHT. 1	1 PLACE --- ± 0.36	SHEET NO. 3 DATE 2 / 12 / 88		
L	SEE SHT. 1	DRAFT WHERE APPLICABLE MUST REMAIN WITHIN DIMENSIONS	PART NO. SD-1625-9*		
LTR.	REVISIONS	LTR.	REVISIONS	DRWG. NO.	SEE CHART
		DRWG. BY JJS	CHK'D. BY RW	FILE NAME S1625-9K3	THIS DRAWING CONTAINS INFORMATION THAT IS PROPRIETARY TO MOLEX INC. AND SHOULD NOT BE USED WITHOUT WRITTEN PERMISSION.
		APP'D. BY RAS	SCALE 2 : 1	DIV. CP	SIZE C