

Robust keypads for harsh industrial use.

Rapid, responsive
and reliable data
entry in wet,
dirty or extreme
conditions.



IMPACT RESISTANT



IP65 SEALED



>4 Million

OPERATIONS PER KEY



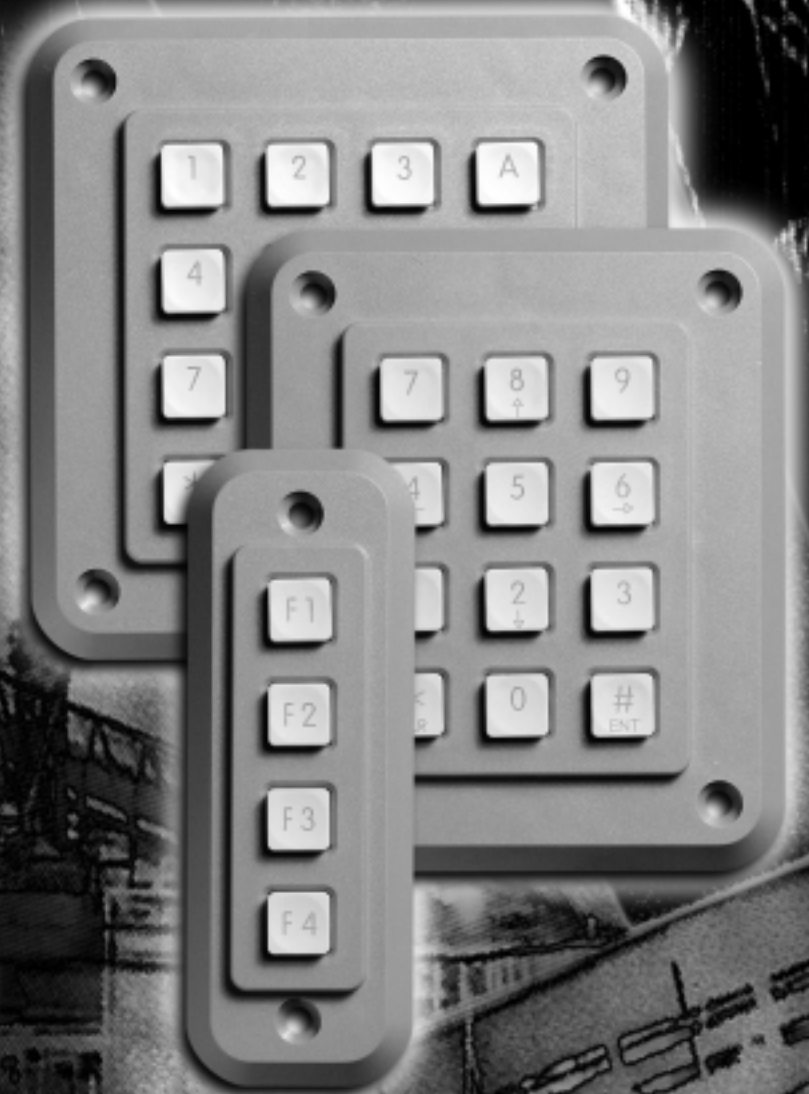
RESPONSIVE KEY ACTION



ESD PROTECTED



CE COMPLIANT



storm[®]
2000 Series

storm[®] 2000 Series

Tough impact resistant keypads suitable for use in harsh industrial and exposed, outdoor environments.

Typical applications include industrial process control, military equipment, instrumentation and access control. Constructed from an advanced super high impact polymer. These responsive keypads are built to survive.

Part No.s

2K0421 (F1-F4)

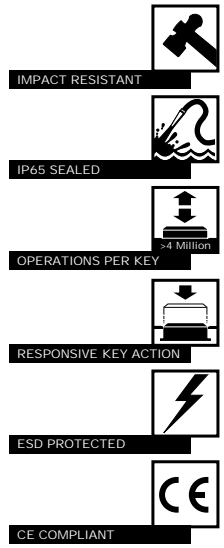
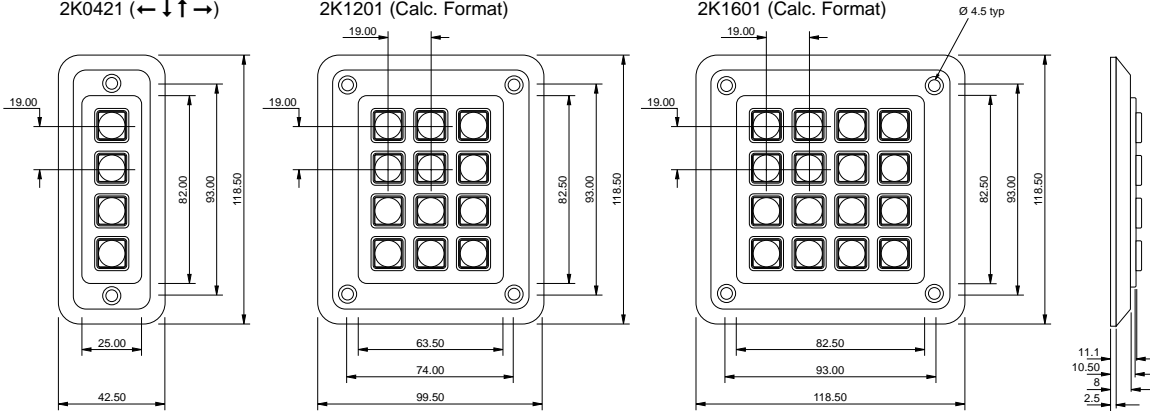
2K0421 (← ↓ ↑ →)

2K12T1 (Tel. Format)

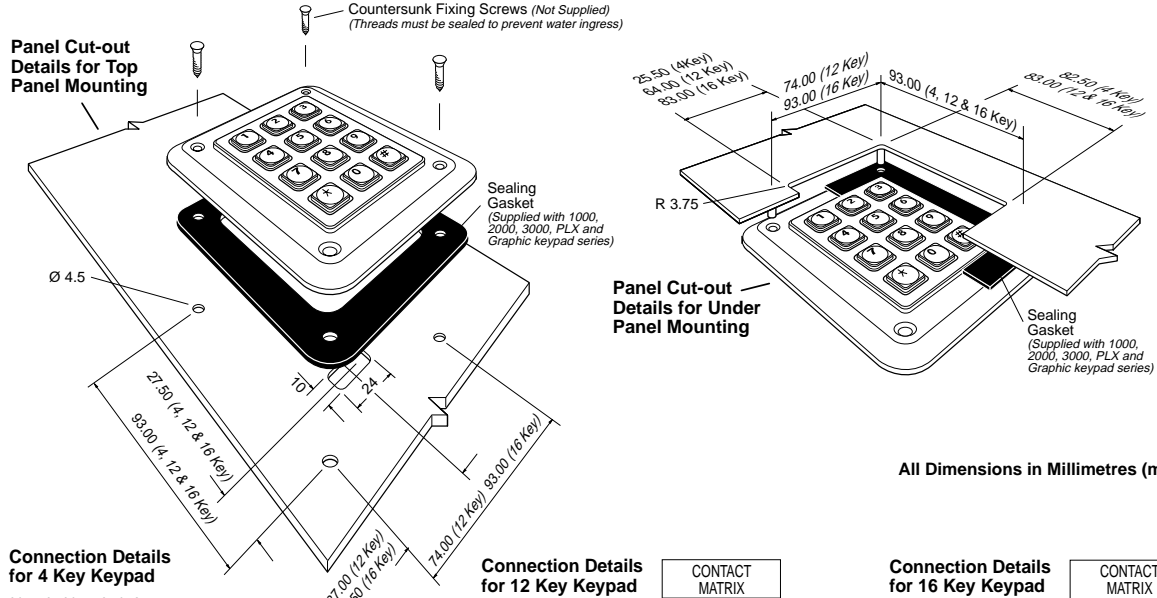
2K1201 (Calc. Format)

2K16T1 (Tel. Format)

2K1601 (Calc. Format)

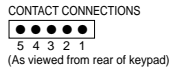


MOUNTING & CONNECTION DETAILS



All Dimensions in Millimetres (mm).

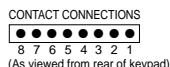
Connection Details for 4 Key Keypad



KEY LOCATION
(As viewed from front of keypad)

CONTACT MATRIX	
CONN. PIN	ROW/COLUMN
1	common
2	D
3	C
4	B
5	A

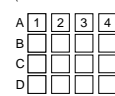
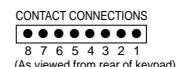
Connection Details for 12 Key Keypad



KEY LOCATION
(As viewed from front of keypad)

CONTACT MATRIX	
CONN. PIN	ROW/COLUMN
1	A
2	B
3	1
4	2
5	3
6	-
7	D
8	C

Connection Details for 16 Key Keypad



KEY LOCATION
(As viewed from front of keypad)

CONTACT MATRIX	
CONN. PIN	ROW/COLUMN
1	A
2	B
3	1
4	2
5	3
6	4
7	D
8	C

ELECTRICAL

- Contact Bounce: 5ms (max)
- Contact Resistance: 100 ohms (max)
- Insulation Resistance: 50 Mohms (min)
- Breakdown Voltage: 500V AC (max 60 secs.)
- Operating Voltage: 24V DC (max)
- Operating Current: 50mA (max)

ENVIRONMENTAL

- Water / Dust Sealed: IP65 (when mounted to suitable enclosure)
- Operational Temp.: -25°C to +85°C (Dry)
- Impact: 20 Joules via 50mm Ø steel impactor

MECHANICAL

- Operational Life: 4 million cycles (min) per key
- Keytop Travel: 1.4mm nominal
- Actuation Force: 180gms nominal
- Connector: 0.1" pitch, gold plated square pin, male connector with locking ramp

MATERIAL

- Casing: Super High Impact Polymer (mid grey)
- Keytops: Super High Impact Polymer (light grey)
- Keytop Legends: Laser Marked
- Contact Circuit: Gold on Nickel plated FR4



FM 39602

USA Office:

MGR
INDUSTRIES

450-B Industrial Drive, Fort Collins, CO 80524
Tel: 970-221 2201 Fax: 970-484 4078

Whilst every effort is made to ensure details are correct at time of production, specifications are subject to change without notice.

Issue 2 - MAY 99
200-LIT-01