

SPECIFICATIONS:

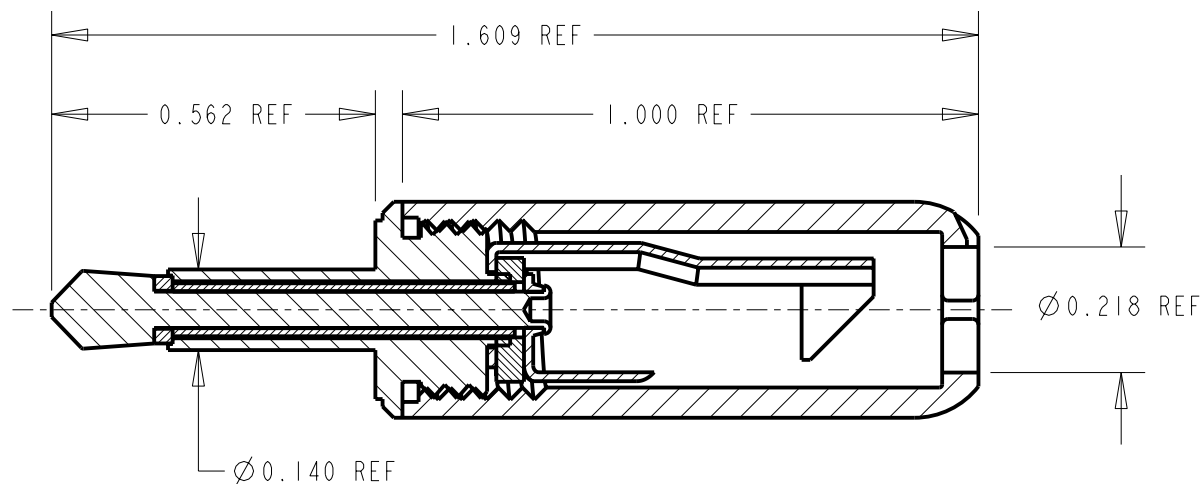
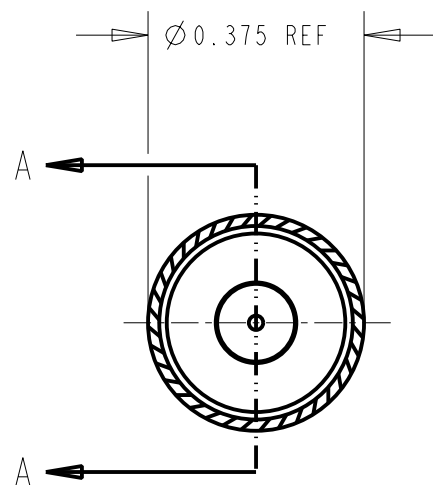
TIP ROD & BODY : BRASS NICKEL PLATED

TERMINALS: BRASS, ELECTRO TIN PLATED

INSULATORS: NATURAL PHENOLIC.

HANDLE: TYPE 6 NYLON, RED. SHIPPED UNASSEMBLED

TUBLAR INSULATOR: MYLAR



SECTION A-A

CUSTOMER DRAWING



STAR SYMBOL DENOTES CRITICAL DIMENSION

THIS DRAWING DESCRIBES A DESIGN CONSIDERED PROPRIETARY IN NATURE, DEVELOPED AND MANUFACTURED BY SWITCHCRAFT INC. AND IS RELEASED ON A CONFIDENTIAL BASIS FOR IDENTIFICATION PURPOSES ONLY.

UNLESS OTHERWISE SPECIFIED

1. ALL DIMENSIONS IN INCHES
 - TWO PLACE DECIMALS ± 0.01
 - THREE PLACE DECIMALS ± 0.005
 - ANGLES $\pm 1^\circ$
 - ALL DIA. CONCENTRIC WITHIN 0.005 T.I.R.

2. FEATURES ON THE SAME CENTERLINE MUST BE ALIGNED WITHIN ± 0.002

3. REMOVE ALL BURRS

SIZE	WIDTH	MULT	LBS/M	TEMPER
------	-------	------	-------	--------

FINISH	MATERIAL
SPEC No.	SPEC No.

FIRST USED ON	SCALE
	3:1

DATE DRAWN	BY	CHKD	APVD
5-19-64	JRT	CJD 7-6-64	LG 7-7-64

Switchcraft®

REV	ECO NUMBER	DATE	BY	APVD
C	21730	5-21-99	DA	JF

SHEET	OF	REV
755	C	

REVISIONS

DO NOT SCALE DRAWING

NAME	PART No.	REV
TINI PLUG 2 CONDUCTOR	755	C