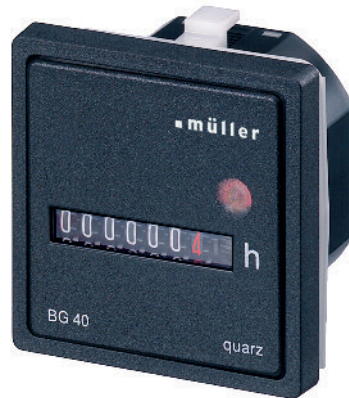




**BW 40.18**  
Front panel 48 x 48 mm



**BG 40.27**  
Front panel with trim 55 x 55 mm

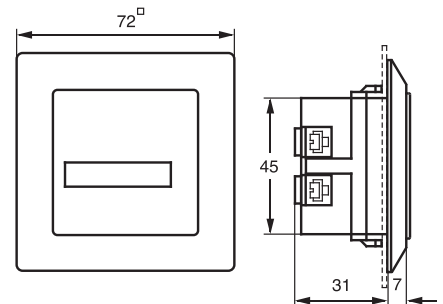
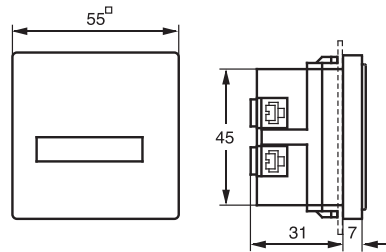
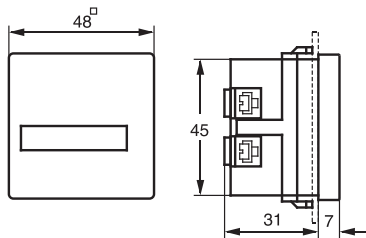


**BG 40.37**  
Front panel with trim 72 x 72 mm

**BW 40.18**  
**BG 40.17**

**BW 40.28**  
**BG 40.27**

**BW 40.38**  
**BG 40.37**



Order number	Version
▼ <b>BW 40.18</b>	Alternating current
▼ <b>BG 40.17</b>	Direct current

▼ Housing colour

Order number	Version
▼ <b>BW 40.28</b>	Alternating current
▼ <b>BG 40.27</b>	Direct current

▼ Housing colour

Order number	Version
▼ <b>BW 40.38</b>	Alternating current
▼ <b>BG 40.37</b>	Direct current

▼ Housing colour

**Highlights**

- With retaining clip
- With universal connections
- Touch proof connections to VBG4
- Low-noise
- BW: Alternating current  
BG: Direct current quartz crystal

**Elapsed time counters BW/BG 40**  
for panel mounting, Alternating/Direct Current

**Special features**

- Large format numerals 4.4 mm in height
- Quick-fix retaining clip
- Easy to connect – screw terminals accessible from rear
- Attachments for other cutouts
- Ring seal for IP 54 – also seals front panel cutout
- BG: quartz stabilized
- BG: large voltage ranges

Technical data	
<b>Supply voltages</b> (please state when ordering)	BW: 230 V, 50 Hz (standard) 115 V, 50 Hz 24 V, 50 Hz BG: 12– 48 VDC (standard) 5– 24 VDC 36–120 VDC
<b>Other voltages</b>	on request
<b>Optional frequency</b>	BW: 60 Hz
<b>Voltage tolerance</b>	BW: ±15% · BG: ±10%
<b>Power consumption</b> (real power)	BW: 0.15 W · BG: approx. 20 mW at 12 VDC
<b>Counter capacity</b>	BW: 99999 h · BG: 999999 h
<b>Accuracy of reading</b>	BW: 0,01 h · BG: 0,1 h
<b>Numeral height</b>	4.4 mm
<b>Numeral colour</b>	white, decimal figures red
<b>Operation indicator</b>	fast-running wheel
<b>Permitted ambient temperature</b>	BW: –15° ... +55°C · BG: –10° ... +50°C
<b>Enclosure</b>	self-extinguishing thermoplastic
<b>Switchboard flush mounting</b>	housing to DIN EN 43700
<b>Type of connection</b>	Universal: Screw, soldered and 6.3 x 0.8 mm AMP plug-type connections
<b>Type of protection</b>	Front IP 50 to DIN EN 60529 (with ring seal 101.003.004: IP 54)
<b>Class of protection</b>	BW: II · BG: III (up to 48 VDC) when fitted in accordance with regulations

**Accessories**

Retaining bracket for fixing to wall or distribution board	692.006
Terminal cover for retaining bracket	003.007
Trim 55 x 55 mm	190.003
Mask 72 x 72 mm	190.004
Mask Ø 72 (for flush mounting-Ø 60)	190.008
Mask Ø 72 (for flush mounting-Ø 50,5)	190.009
Ring seal for IP 54	101.003
Ratchet clamp for BW 40.28	101.001

