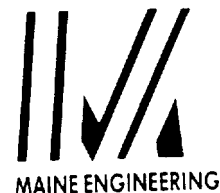
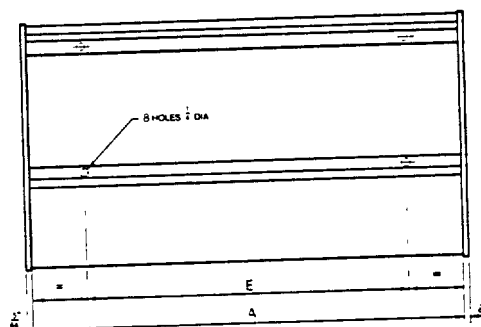
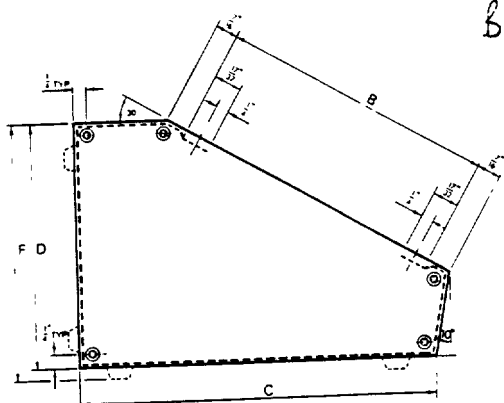
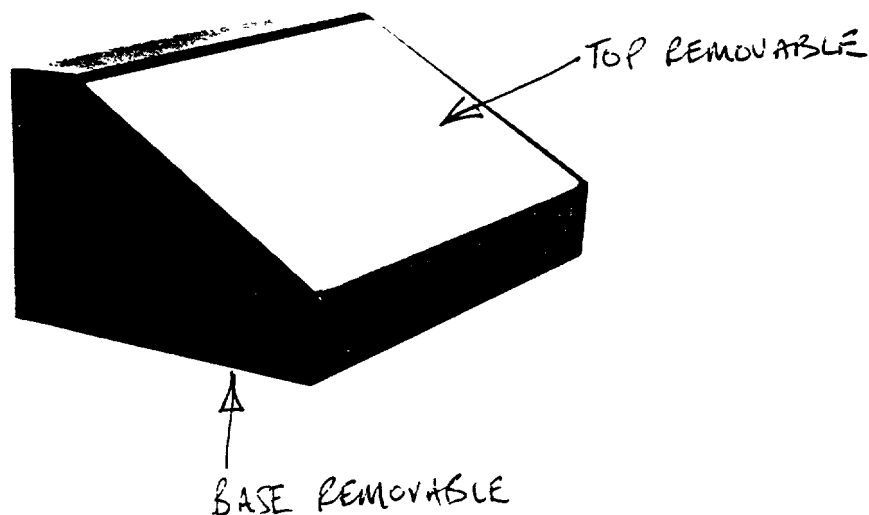


301-735 to 759



Sloper (type LSC)



Case Type Order Code		A	B	C	D
LSC5-8-6	ins	8	5	6 5/8	4 1/2
	mm	204	127	168.3	114.3
LSC7-12-9	ins	12	7	9	6 3/8
	mm	306	177.8	228.6	162
LSC10-15-12	ins	15	10	12	9
	mm	382	254	304.8	203.2

MATERIAL: Front Panels 1.2mm mild steel.

CONSTRUCTION: One piece body with internally welded side panels, 4 polythene feet. The visual advantages of the sloping case are doubly served in the design of the LSC, which allows the case to be used in either of two configurations i.e. 30 or 60 degrees slope, depending on which side is used as the base.

FINISH: Blue Hammertone
Other finishes available on request.