



SS311PT Bipolar Hall-effect Digital Position Sensors

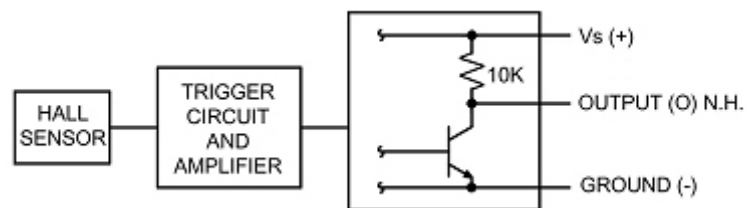
General Description:

The SS311PT sensors are small, versatile digital Hall-effect devices that are operated by the magnetic field from a permanent magnet or an electromagnet, designed to respond to alternating North and South poles. These bipolar sensors have enhanced sensitivity which allows for the use of smaller, often less expensive magnets. The internal pull-up resistor often eliminates the need for external components, further helping to reduce system cost. These economical bipolar sensors are suited for much simple, high volume, cost-sensitive, rotary sensing applications.



Key Features:

- Subminiature, SOT-23 surface mount package (SS311PT) supplied on tape and reel allows for a compact design with automated component placement, helping to reduce manufacturing costs.
- Sensitive, bipolar magnetics respond to alternating North and South poles, making these products suited for speed sensing and RPM measurement.
- Built-in pull-up resistor can easily interface with common electronic circuits without adding external components, helping to reduce total system cost.
- RoHS-compliant materials meet Directive 002/95/EC.



Applications:

- Transportation
 - Speed and RPM (revolutions per minute) sensing
 - Tachometer, counter pickup
 - Motor and fan control
 - Brushless dc motor control
- Industrial and Commercial
 - Speed and RPM (revolutions per minute) sensing

- Tachometer, counter pickup
- Flow-rate sensing
- Brushless dc (direct current) motor commutation
- Motor and fan control
- Robotics control

Related Products Information:

Mfr Part #	Farnell #	Newark #	Description
SS311PT	1784726	50R8553	Bipolar Hall-effect Digital Position Sensors
SS411P	1784734	50R8557	Bipolar Hall-effect Digital Position Sensors
SS40A	1082268	71J7819	Bipolar Hall-effect Magnetic Position Sensors
SS361RT	1764567	11R0676	Bipolar latching, Hall-effect digital sensor IC
SS461R	1735770	11R0677	Bipolar latching, Hall-effect digital sensor IC
SS511AT	1785773	33K8454	Bipolar Hall-Effect Digital Position Sensor
SS513AT	1786019	86C1045	Bipolar Hall-Effect Digital Position Sensor
APS00B	1789385	05N0305	Bipolar Hall-effect Magnetic Position Sensors