

## LTM8021 - 36VIN, 500mA Step-Down DC\_DC $\mu$ Module

### General Description:

The LTM8021 is a 36V<sub>IN</sub> 500mA, step-down DC/DC  $\mu$ Module™. Included in the package are the switching controller, power switches, inductor, and all support components. Operating over an input voltage range of 3V to 36V, the LTM8021 supports an output voltage range of 0.8V to 5V, set by a single resistor. Only an output and bulk input capacitor is needed to finish the design.

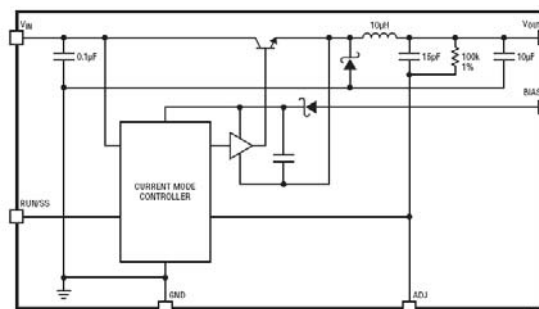


The low profile package (2.82mm) enables utilization of unused space on the bottom of PC boards for high density point of load regulation. A built-in soft-start timer is adjustable with just a resistor and capacitor.

The LTM8021 is packaged in a thermally enhanced, compact (11.25mm × 6.25mm) and low profile (2.82mm) overmolded Land Grid Array (LGA) package suitable for automated assembly by standard surface mount equipment. The LTM8021 is RoHS compliant.

### Key Features:

- Complete Switch Mode Power Supply
- Wide Input Voltage Range: 3V to 36V
- 500mA Output Current
- 0.8V to 5V Output Voltage
- Fixed 1.1MHz Switching Frequency
- Current Mode Control
- (e4) RoHS Compliant Package with Gold Pad Finish
- Programmable Soft-Start
- Tiny, Low Profile (11.25mm × 6.25mm × 2.82mm) Surface Mount LGA Package



### Applications:

- Automotive Battery Regulation
- Power for Portable Products
- Distributed Supply Regulation

- Industrial Supplies
- Wall Transformer Regulation

## Related Products Information:

Mfr Part #	Farnell #	Newark #	Description
LTM8021EV#PBF	1637169	01P1603	36VIN, 500mA Step-Down DC/DC $\mu$ Module, LGA
LTM8021IV#PBF	1799825	15N3618	36VIN, 500mA Step-Down DC/DC $\mu$ Module, LGA

