



MCP631_2_3_5 24 MHz, 2.5 mA Op Amps

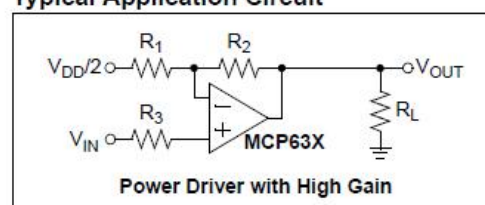
General Description:

The MCP631/2/3/5 family of operational amplifiers features high gain bandwidth product and high output short circuit current. Some devices also provide a Chip Select pin that supports a low power mode of operation. These amplifiers are optimized for high speed, low noise and distortion, single-supply operation with rail-to-rail output and an input that includes the negative rail.

Key Features:

- Gain Bandwidth Product: 24 MHz (typical)
- Short Circuit Current: 70 mA (typical)
- Noise: 10 nV/√Hz (typical, at 1 MHz)
- Rail-to-Rail Output
- Slew Rate: 10 V/μs (typical)
- Supply Current: 2.5 mA (typical)
- Power Supply: 2.5V to 5.5V
- Extended Temperature Range: -40°C to +125°C

Typical Application Circuit



Applications:

- Driving A/D Converters
- Power Amplifier Control Loops
- Barcode Scanners
- Optical Detector Amplifier

Related Products Information:

Mfr Part #	Farnell #	Newark #	Description
MCP631-E/SN	1800219	24R6830	operational amplifier with single pin - 8-Lead SOIC
MCP632-E/SN	1800221	24R6833	operational amplifier with single CS pin - 8-Lead DFN
MCP633-E/SN	1800222	24R6836	operational amplifier with dual pin - 8-Lead SOIC
MCP635-E/UN	1800223	24R6839	operational amplifier with dual with two CS pins - 8-Lead SOIC

