

Molex's Category 5E product range is known as the PowerCat™ system. Designed to meet or exceed the requirements of: TIA/EIA 568B.2.1, ISO/IEC 11801:2002, EN 50173:2002 standards.

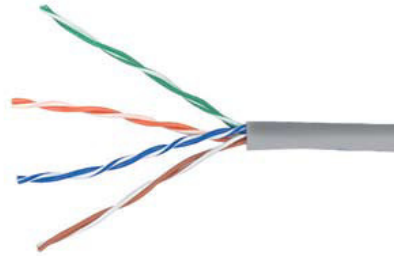
The product range offers backwards compatibility with Category 5 systems, with enhanced performance.

PowerCat U/UTP Cable - PVC

PowerCat™ CSE U/UTP 4 Pair cable has been designed to support high speed data transmission systems. The cable is available in PVC and LSZH sheaths on a 305m Reel-in-a-Box designed to facilitate transportation and cable access.

- U/UTP 4 pair PVC and LSZH cable
- Colour coded for ease of termination
- Independently tested
- 305 metre reel

Order No.	Description
Contact Internal Sales	4 Pair PVC Cable U/UTP CSE - 305m Reel in a Box
Contact Internal Sales	4 Pair LSZH Cable IEC 332.1 U/UTP CSE - 305m Reel in a Box



PowerCat UTP Patch Cords

PowerCat™ patch cords are manufactured using high quality Category 5E stranded cable. Available in a range of colours and lengths, PowerCat patch cords are pre-terminated with RJ45 plugs and feature a slim-line strain relief boot and a plug latch protection cap. The Slim Boot design provides an effective solution to the problem of patch cord congestion in high density 1U active equipment. Ideal for hubs/switches where space between individual RJ45 jacks is limited.

- Unshielded 4 Pair stranded cable
- Pre-terminated with WE8W Plugs
- Slim Boot Design
- Suitable for high density active equipment with limited space between individual RJ45 jacks
- Strain Relief Boots
- PVC and LSZH variants
- Available in 9 colours to facilitate improved wiring closer manageability



PVC Sheath	LSZH Sheath	Description
PCD-00199-0*	PCD-00266-0*	Slim Boot Patch Cord 568A/B UTP CSE - 0.5m
PCD-00180-0*	PCD-00267-0*	Slim Boot Patch Cord 568A/B UTP CSE - 1m
PCD-00241-0*	PCD-00268-0*	Slim Boot Patch Cord 568A/B UTP CSE - 1.5m
PCD-00181-0*	PCD-00269-0*	Slim Boot Patch Cord 568A/B UTP CSE - 2m
PCD-00242-0*	PCD-00270-0*	Slim Boot Patch Cord 568A/B UTP CSE - 2.5m
PCD-00182-0*	PCD-00271-0*	Slim Boot Patch Cord 568A/B UTP CSE - 3m
PCD-00243-0*	PCD-00272-0*	Slim Boot Patch Cord 568A/B UTP CSE - 3.5m
PCD-00244-0*	PCD-00273-0*	Slim Boot Patch Cord 568A/B UTP CSE - 4m
PCD-00183-0*	PCD-00274-0*	Slim Boot Patch Cord 568A/B UTP CSE - 5m
PCD-00245-0*	PCD-00275-0*	Slim Boot Patch Cord 568A/B UTP CSE - 6m
PCD-00190-0*	PCD-00276-0*	Slim Boot Patch Cord 568A/B UTP CSE - 7m
PCD-00246-0*	PCD-00277-0*	Slim Boot Patch Cord 568A/B UTP CSE - 8m
PCD-00247-0*	PCD-00278-0*	Slim Boot Patch Cord 568A/B UTP CSE - 9m
PCD-00284-0*	PCD-00279-0*	Slim Boot Patch Cord 568A/B UTP CSE - 10m
PCD-00248-0*	PCD-00280-0*	Slim Boot Patch Cord 568A/B UTP CSE - 15m
PCD-00249-0*	PCD-00281-0*	Slim Boot Patch Cord 568A/B UTP CSE - 20m

* Colour Options: 0=C, Red, EE = Grey, 0H = Blue, 0I = White, 0J = Green, 0K = Yellow, 0L = Purple, 0M = Orange, BK = Black

PowerCat DataGate Patch Panel

PowerCat™ CSE DataGate™ Panels feature the shuttered DataGate connector. These panels feature integral rear cable management trays and are available in 24 and 48 port versions. Individual ports can be colour coded using an icon for site-specific network administration.

- 19" Shuttered DataGate CSE Panel
- EIA 568A/B colour coded
- Integral cable management tray
- Graphite grey finish



Order No.	Description
PID-00174	24 Port DataGate Patch Panel with Cable Management RJ45 568A/B UTP CSE - 1U
PID-00175	48 Port DataGate Patch Panel with Cable Management RJ45 568A/B UTP CSE - 2U
Accessories	
CSP-00021-**-*	Blank Connector Icon Labels 6-Pack (Bag of 10)
CSP-00022-**-*	Data Connector Icon Labels 6-Pack (Bag of 10)
CSP-00023-**-*	Voice Connector Icon Labels 6-Pack (Bag of 10)

** Colour Options: 0I = Almond, 0J = White, 0K = Black, 0L = Light Grey, 0M = Red, 0N = Blue, 0O = Green, 0P = Yellow, 0Q = Orange, 0R = Purple

PowerCat Angled Patch Panels

Angled Patch Panels are ideal for installations of high density or which utilise extensive side and end-of-the-rack cable management. The angled feature provides enhanced port access and minimises patch cord bend radius to the rack. Each port features a patented spring-loaded shutter and can be colour coded to match jack outlets and provides both front and rear labelling options.

- Shuttered DataGate™ RJ45
- 24 Ports 1U & 48 Port 2U
- Category 5E performance
- EIA 568A/B wired
- Standard 19" rack mount
- Individually removable patch panel ports
- Integral cable management tray



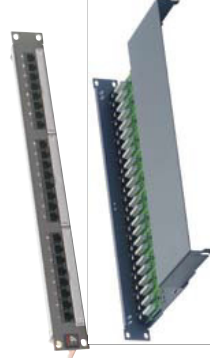
PowerCat 6	Description
PID-00154	24 Port Angled Patch Panel RJ45 568A/B UTP CSE - 1U
PID-00155	48 Port Angled Patch Panel RJ45 568A/B UTP CSE - 2U

For Connector Icon Labels see above

PowerCat Standard Grade UTP Patch Panels

PowerCat™ Standard Grade patch panels are a cost effective and versatile means for connecting horizontal cabling. Featuring an integral rear cable management tray for ease of installation and cable dressing. Port labelling is also featured for site-specific network administration.

- 24 Ports 1U or 48 Ports 2U
- PCB mounted KAT IDC
- EIA 568B wired
- Standard 19" rack mounted
- Integral cable management tray
- Supplied with or without cover
- Graphite grey finish



Order No.	Description
27.1B.241.A005G	24 Port Patch Panel (with cover) RJ45 568B UTP CSE - 1U
PID-00058	24 Port Patch Panel RJ45 568B UTP CSE - 1U
PID-00059	48 Port Patch Panel RJ45 568B UTP CSE - 2U
PID-00063	24 Port Patch Panel (without port marking) RJ45 568B UTP CSE - 1U