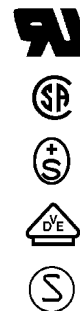
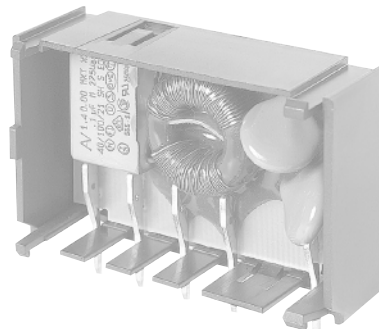
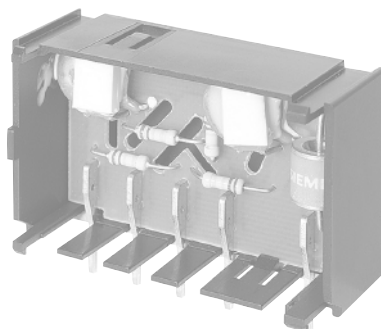
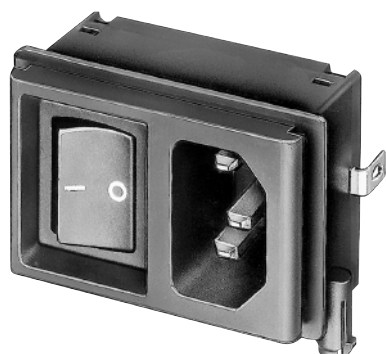


Actual information about approvals can be found on <http://www.schurter.com/approvals>



Inlet with line switch

C14



70° C

Description

- Panel mount:
Sandwich or rear-side
- 2 Functions:
Connector Protection class I, Line switch 1- and 2- pole
- For PCB mounting
- Alternative: version with line filter » [KPF](#)
- We recommend for new applications type » [DC21](#)

Characteristics

- Panel mount from rear or "sandwich" between top and bottom/side to side panels
PCB mount with snap-in or screw-on feet (self tapping screws Ø 3 x 8 mm)
- All single elements are already wired
- Line switch non-illuminated
- Insulation cover on the rear-side
- Qualified for use in equipment according IEC/EN 60950

Other versions on request:

- line switch, illuminated (only 2-pole version)
- line switch with other rocker marking
- for protection class II

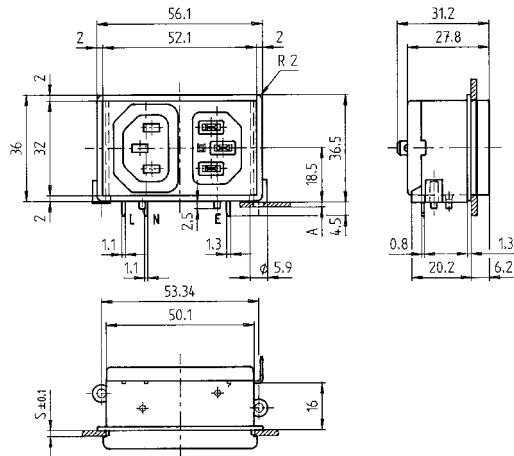
Technical data

Ratings IEC	10 A / 250 VAC; 50 Hz
Ratings UL/CSA	15 A / 250 VAC; 60 Hz
Dielectric strength	> 2.3 kVAC between L-N > 2.8 kVAC between L/N-PE (1 min/50 Hz)
Allowable operation temp.	-25 °C to 70 °C
Degree of protection	from front side IP40 acc. to IEC 60529
Protection class	Suitable for appliances with protection class I acc. to IEC 61140
Terminals	For PCB mounting
Panel thickness s	Snap-in: 1.5/2/2.5/3 mm
Materials: Housing	Thermoplastic, black, UL 94V-0

Appliance-inlet /-outlet	C14 acc. to IEC/EN 60320-1, UL 498, CSA C22.2 no. 42 (for cold condition) pin-temperature 70 °C, 10 A, Protection class I
Line switch	Rocker switch 1- or 2-pole, non-illuminated, acc. to IEC 61058-1 Technical details » GENERAL PRO-DUCT INFORMATION

Dimensions

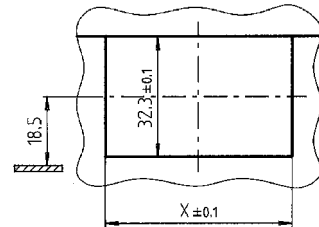
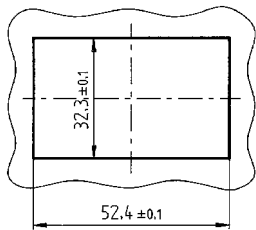
Screw on PCB mounting



A = for PCB-thickness 1.2/1.6/2.0/2.4 mm
Additional quick connect terminal 4.8 x 0.8 mm

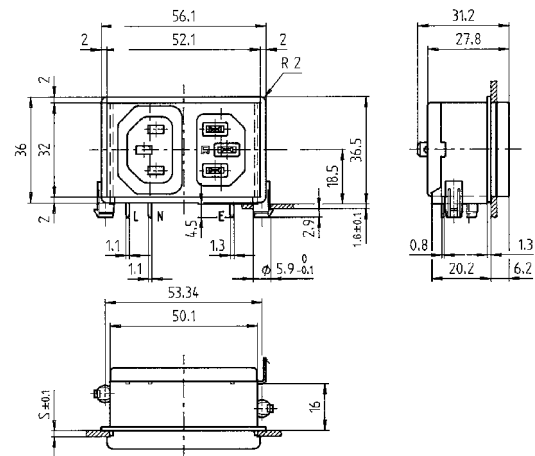
Mounting holes for backside mounting

Sandwich mounting holes



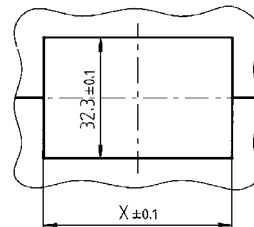
X = 48.4 at S = 1.5 and 2.5
X = 50.4 at S = 2.0 and 3.0

Snap-in PCB mounting



Additional quick connect terminal 4.8 x 0.8 mm
s = panel thickness

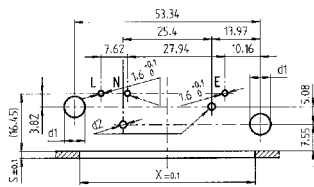
Sandwich mounting holes



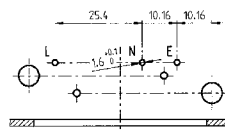
X = 48.4 at S = 1.5 and 2.5
X = 50.4 at S = 2.0 and 3.0

Drilling diagrams

For 2-pole inlet/switch, 2-pole inlet/fuseholder and inlet/outlet

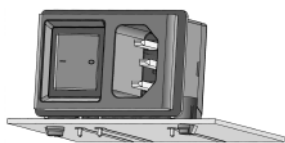


For 1-pole inlet/switch and 1-pole inlet/fuseholder
S and X see mounting holes



Other dimensions as for 2-poles
d1 = 6 ± 0.05 for (snap-in)
d1 = 3.6 (screw-on)
d2 = 2 ± 0.1 (screw-on)
Dimensions without tolerance:
≤ 15 = ± 0.05; ≥ 15 = ± 0.1

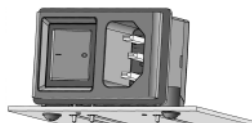
Mounting instructions



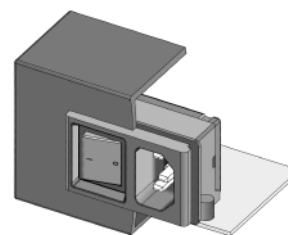
Stable snap feet requires minimal insertion force



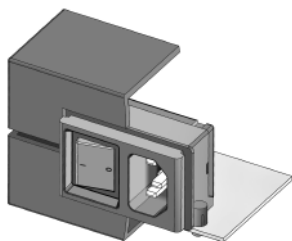
Module must lay flat on the PCB when soldering



Screw-on mount uses self-tapping screws

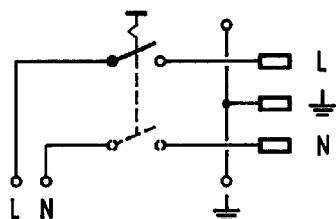


Insertion from behind



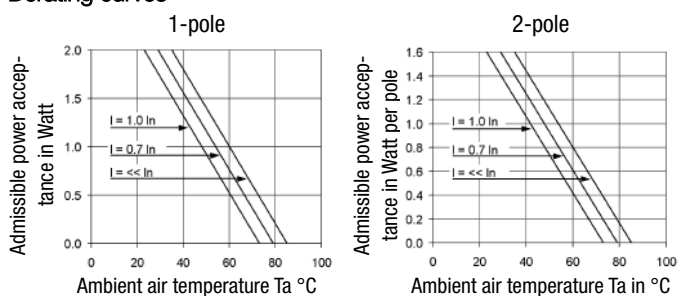
"Sandwich" mounting with split enclosure panels

Diagrams



Inlet with line switch

Derating curves



Variants

Order Number	Panel mounting	Panel thickness s [mm]	PCB [mm]	Line switch	Fuseholder	Appliance outlet
KP01.1212.11	Snap-in	2	1.6	1-pole		
KP01.1112.11	Snap-in	2	1.6	2-pole		
KP01.1213.11	Snap-in	3	1.6	1-pole		
KP01.1113.11	Snap-in	3	1.6	2-pole		
KP01.1252.11	Screw-on	2	1.2/1.6/2.0/2.4	1-pole		
KP01.1152.11	Screw-on	2	1.2/1.6/2.0/2.4	2-pole		
KP01.1253.11	Screw-on	3	1.2/1.6/2.0/2.4	1-pole		
KP01.1153.11	Screw-on	3	1.2/1.6/2.0/2.4	2-pole		

Type KP without cover: KP01.XXXX.XX90

Packaging unit 50 Pcs
