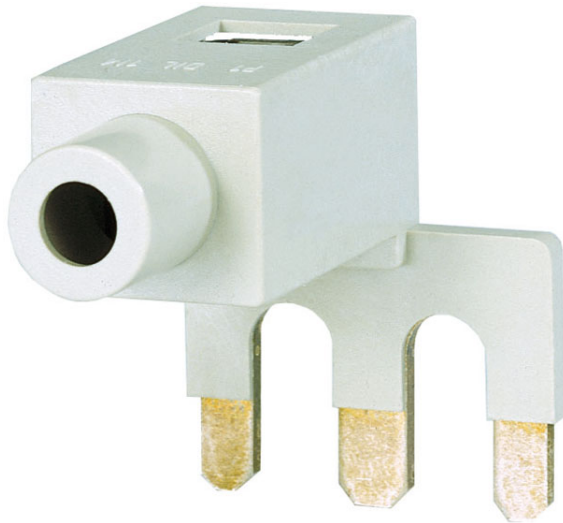


Type: **DILM12-XP1**
Article No.: **281193**



Ordering information

For use with

DILM7 – DILM12

Notes concerning the product group

4th pole can be broken off

4-pole: $I_{th} = 60$ A open

3-pole: $I_{th} = 50$ A open

AC-1 current carrying capacity of the open contactor increases by a factor of 2.5.

Protected against accidental contact in accordance with IEC 536.

Terminal capacity for DILM..-XP1 → Technical data

Moeller GmbH, Hein-Moeller-Str. 7-11, D-53115 Bonn
E-Mail: catalog@moeller.net, Internet: www.moeller.net, <http://catalog.moeller.net>
Copyright 2005 by Moeller GmbH. Subject to modifications. HPL-C2005GB-INT V3.0