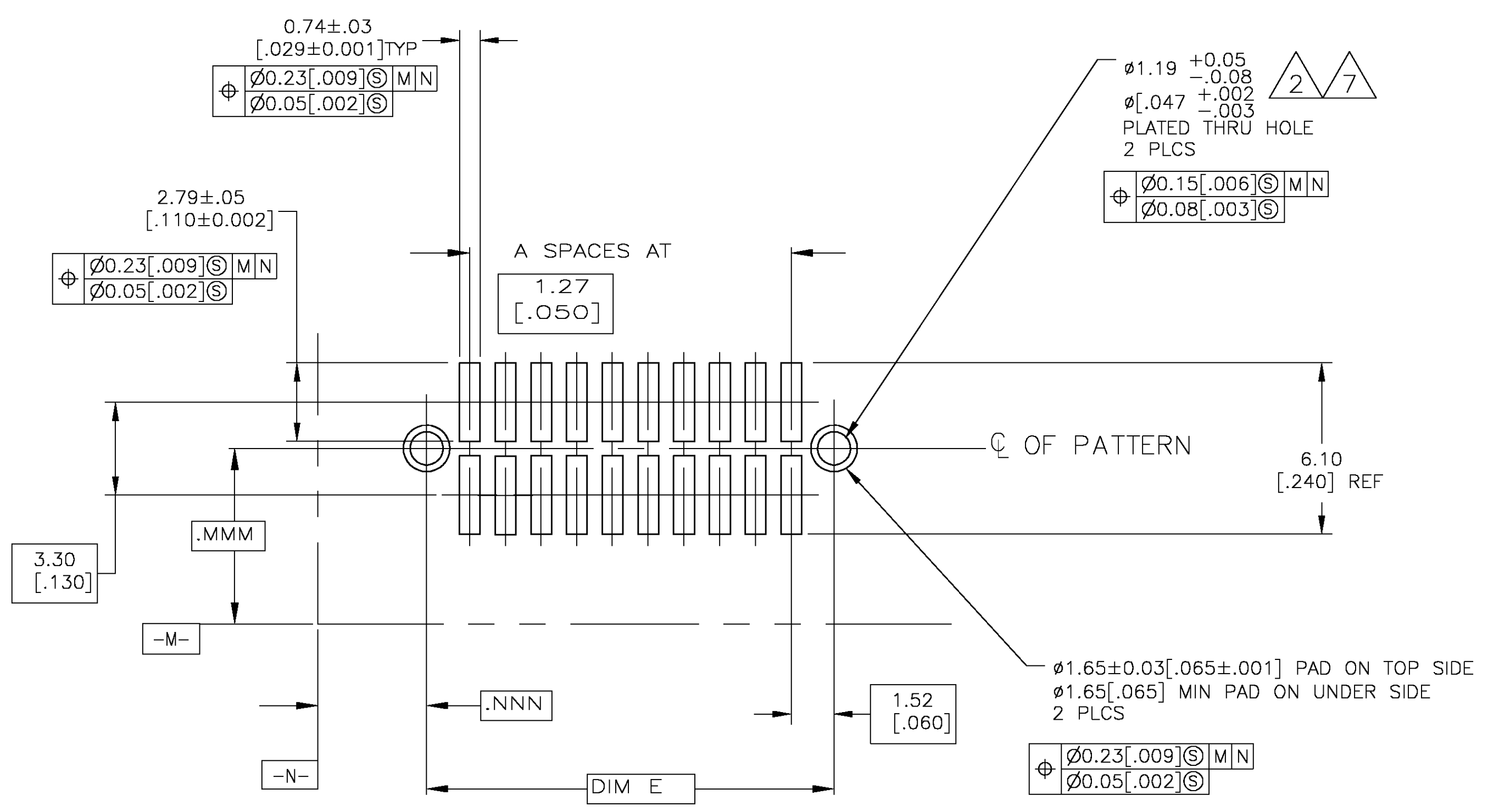


- 1 0.00076 [.000030] GOLD IN LOCALIZED PLATE AREA
0.00381 [.000150] TIN-LEAD ON SOLDER TAILS
ALL OVER 0.00127 [.000050] NICKEL
- 2 USE 1.32 ± 0.02 [.0520 ± .0010] DRILLED HOLE (#55 DRILL)
FINISH TO BE TIN/LEAD OVER 0.02 [.001] MIN COPPER
- 3 PLATING: 0.0038 [.000150] TIN-LEAD OVER 0.00127 [.000050] NICKEL
- 4 IF PLANNING TO USE MORE THAN ONE MATING PAIR OF CONNECTORS
TO INTERCONNECT 2 BOARDS, PLEASE REFER TO "SPACING"
PARAGRAPH IN THE APPLICATION SPEC, #114-7010
- 5 HOUSING: LCP, COLOR:BLACK.
CONTACT: COPPER ALLOY PER ASTM SPECIFICATION B422.
HOLDDOWN: COPPER ALLOY PER ASTM SPECIFICATION B194.
- 6 0.00076 [.000030] GOLD IN LOCALIZED PLATE AREA
0.00381 [.000150] TIN ON SOLDER TAILS
ALL OVER 0.00127 [.000050] NICKEL
- 7 USE 1.32 ± 0.02 [.0520 ± .0010] DRILLED HOLE (#55 DRILL)
FINISH TO BE TIN OVER 0.02 [.001] MIN COPPER
- 8 PLATING: 0.0038 [.000150] TIN OVER 0.00127 [.000050] NICKEL
- 9 PRELIMINARY PART - NOT RELEASED FOR PRODUCTION.

6/8	11.93	5.97	14.63	10.56	7	16	6-104652-1
6/8	65.28	32.640	67.97	63.91	49	100	6-104652-0
6/8	58.93	29.46	61.62	57.56	44	90	5-104652-9
6/8	2.320	1.160	2.426	2.266	39	80	5-104652-8
6/8	52.58	26.290	55.27	51.21	34	70	5-104652-7
6/8	2.070	1.035	2.176	2.016	29	60	5-104652-6
6/8	46.23	23.11	48.92	44.86	24	50	5-104652-5
6/8	1.820	.910	1.926	1.766	19	40	5-104652-4
6/8	39.88	19.940	42.57	38.51	14	30	5-104652-3
6/8	1.570	.785	1.676	1.516	9	20	5-104652-2
6/8	33.53	16.76	36.22	32.16	4	10	5-104652-1
6/8	1.320	.660	1.426	1.266			
6/8	27.18	13.590	29.87	25.81			
6/8	1.070	.535	1.176	1.016			
6/8	20.83	10.41	23.52	19.46			
6/8	.820	.410	.926	.766			
6/8	14.48	7.240	17.17	13.11			
6/8	.570	.285	.676	.516			
6/8	8.12	4.06	10.82	6.75			
6/8	.320	.160	.426	.266			
OBSOLETE	11.93	5.97	14.63	10.56	7	16	1-104652-1
OBSOLETE	65.28	32.640	67.97	63.91	49	100	1-104652-0
OBSOLETE	2.570	1.285	2.676	2.516	44	90	104652-9
OBSOLETE	58.93	29.46	61.62	57.56	39	80	104652-8
OBSOLETE	2.320	1.160	2.426	2.266	34	70	104652-7
OBSOLETE	52.58	26.290	55.27	51.21	29	60	104652-6
OBSOLETE	2.070	1.035	2.176	2.016	24	50	104652-5
OBSOLETE	46.23	23.11	48.92	44.86	19	40	104652-4
OBSOLETE	1.820	.910	1.926	1.766	14	30	104652-3
OBSOLETE	39.88	19.940	42.57	38.51	9	20	104652-2
OBSOLETE	1.570	.785	1.676	1.516	4	10	104652-1
OBSOLETE	33.53	16.76	36.22	32.16			
OBSOLETE	1.320	.660	1.426	1.266			
OBSOLETE	27.18	13.590	29.87	25.81			
OBSOLETE	1.070	.535	1.176	1.016			
OBSOLETE	20.83	10.41	23.52	19.46			
OBSOLETE	.820	.410	.926	.766			
OBSOLETE	14.48	7.240	17.17	13.11			
OBSOLETE	.570	.285	.676	.516			
OBSOLETE	8.12	4.06	10.82	6.75			
OBSOLETE	.320	.160	.426	.266			
FINISH	E	D	C	B	A	NO OF POS	PART NUMBER



RECOMMENDED BOARD LAYOUT
SCALE: 7:1

THIS DRAWING IS A CONTROLLED DOCUMENT.

DIMENSIONS: mm [INCHES]	TOLERANCES UNLESS OTHERWISE SPECIFIED:	DRAWN: KATE HELM 08/07/91	CHK: D. GORENC 8/12/91	APD: -	NAME: Tyco Electronics Corporation Harrisburg, Pa 17105-3608
0 PLC ± -	1 PLC ± -	2 PLC ± -	3 PLC ± -	4 PLC ± -	ANGLES ± -
MATERIAL: 5		FINISH: SEE TABLE		PRODUCT SPEC: 108-1332	APPLICATION SPEC: 114-7010
WEIGHT: -		CUSTOMER DRAWING		SIZE: A1	CAGE CODE: 00779
SCALE: 10:1		SHEET: 1 OF 1		REV: L	