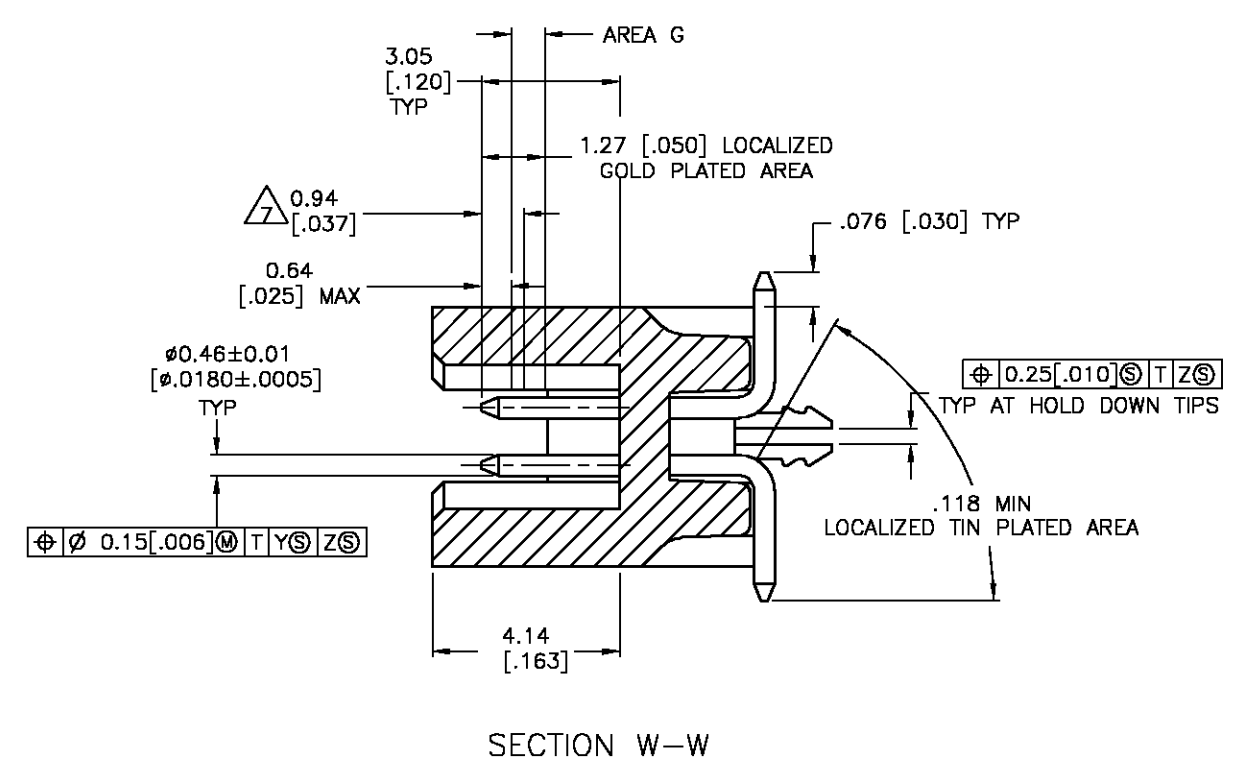
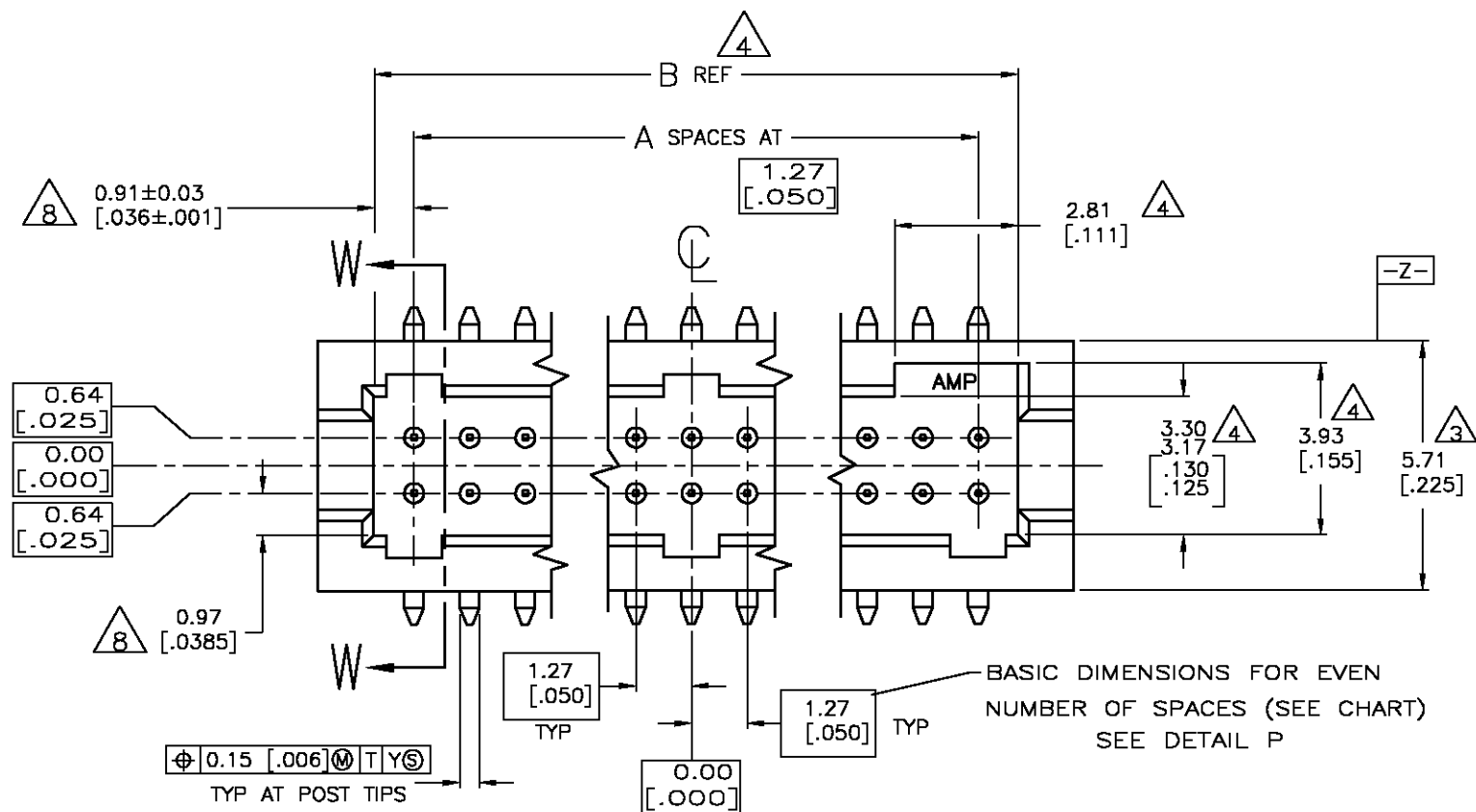
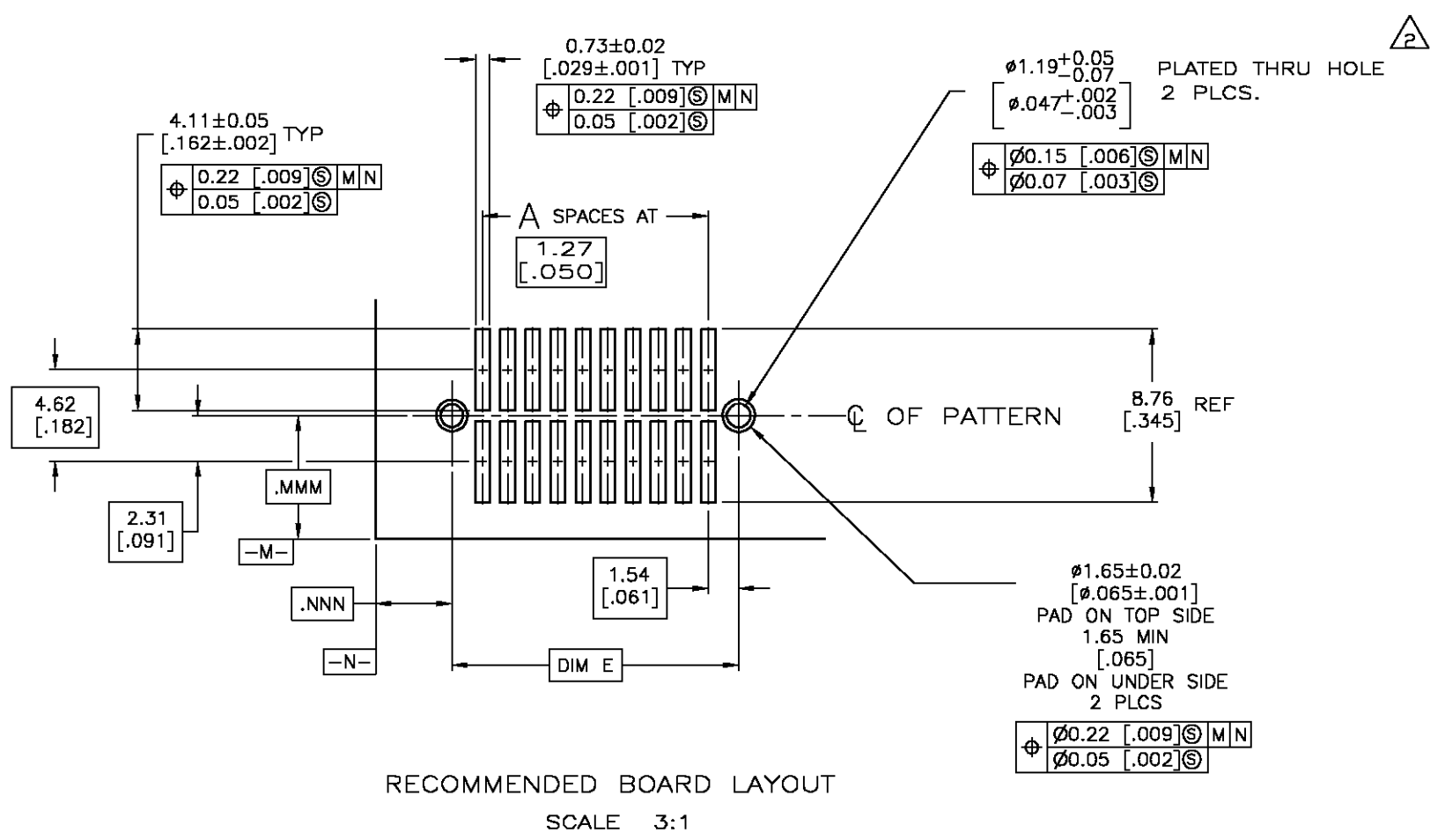
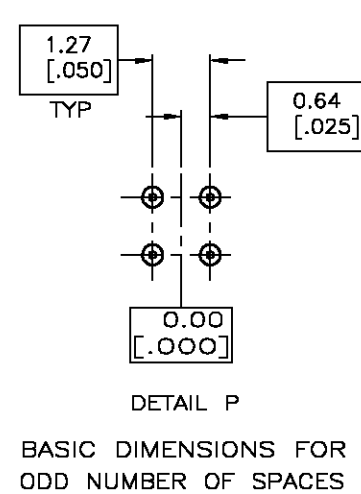
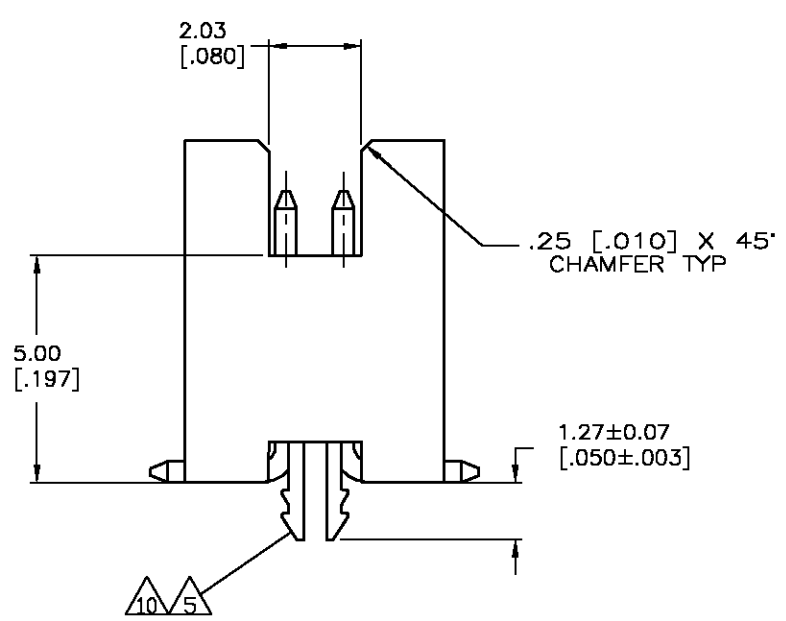
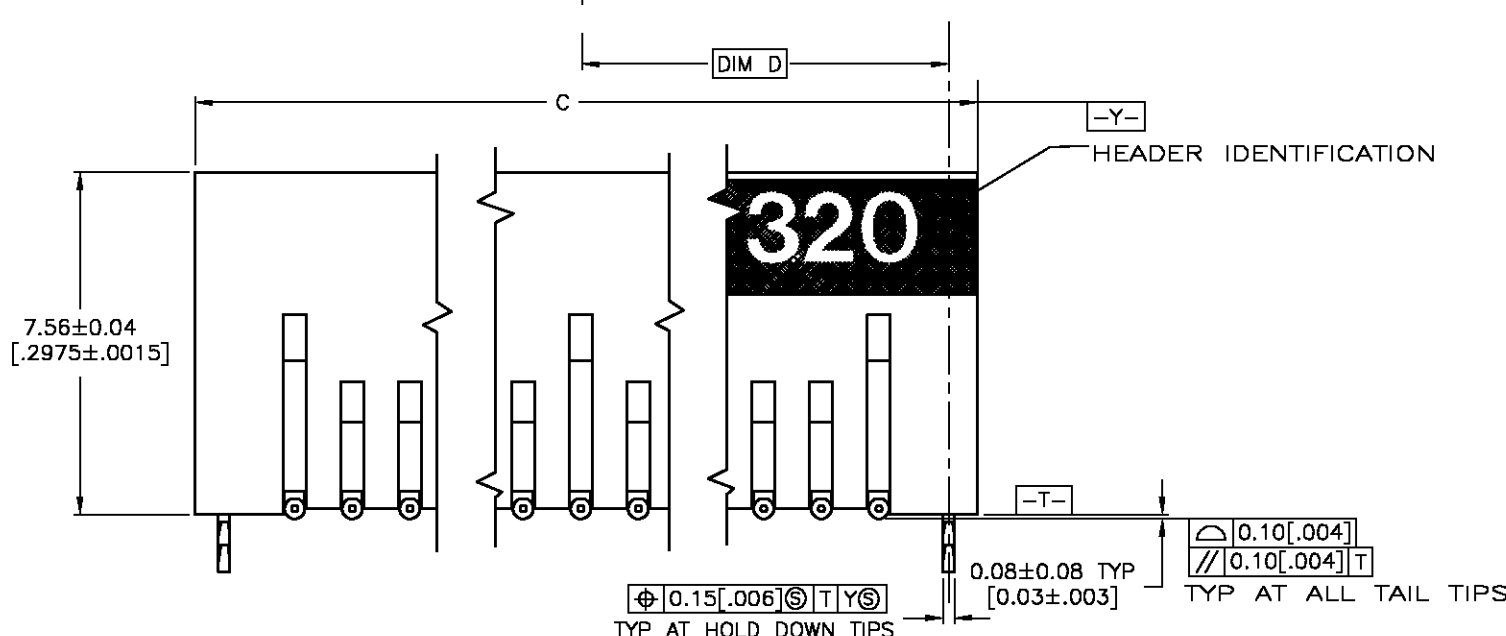


THIS DRAWING IS UNPUBLISHED. RELEASED FOR PUBLICATION
 © COPYRIGHT BY TYCO ELECTRONICS CORPORATION. ALL RIGHTS RESERVED.

| LOC | | DIST | | REVISIONS | | | |
|-----|-----|-----------------|--|-----------|-----|------|--|
| P | LTR | DESCRIPTION | | DATE | DWN | APVD | |
| J | | EC 0G3C 0712 04 | | 01DEC04 | BSV | DLS | |



- △ 0.00076[.000030] GOLD AT POINT OF MEASUREMENT, 0.00051[.000020] MIN AT THE END POINTS OF AREA G, (LOCALIZED PLATE AREA), 0.0038[.000150] TIN-LEAD ON LOCALIZED TIN PLATED AREA, ALL OVER 0.0013[.000050] NICKEL.
- △ USE 1.32 ±0.02 [.0520±.0010] DRILLED HOLE (#55 DRILL). FINISH TO BE TIN PLATE OVER 0.02 [.001] MIN COPPER.
- △ DIMENSION APPLIES AT BASE OF SHROUD.
- △ THE NOTED DIMENSIONS APPLY AT THE MATING FACE OF THE HOUSING.
- △ 0.00038 [.000150] TIN-LEAD ON HOLD DOWN, ALL OVER 0.0013 [.000050] NICKEL.
- 6. IF PLANNING TO USE MORE THAN ONE MATING PAIR OF CONNECTORS TO INTERCONNECT 2 BOARDS, PLEASE REFER TO PARA. 3.3 IN THE APPLICATION SPEC, #114-7010
- △ POINT OF MEASUREMENT
- △ DIMENSIONS NOTED APPLY FROM THE BASIC DIMENSION LINE (NOT THE CIRCUIT CAVITY CENTER LINE) TO THE SURFACE INDICATED.
- △ 0.00076(0.000030) GOLD AT POINT OF MEASUREMENT, 0.00051(.000020) MIN AT THE END POINTS OF AREA G, (LOCALIZED PLATE AREA), 0.0038(.000150) TIN ON LOCALIZED TIN PLATED AREA, ALL OVER 0.0013(.000050) NICKEL.
- △ 0.0038 (.000150) TIN ON HOLDDOWN, ALL OVER 0.0013 (.000050) NICKEL.



| | | | | | | |
|------------------|------------------|------------------|------------------|----|---------------------|--------------|
| 65.33 [2.572] | 32.66 [1.286] | 66.59 [2.622] | 64.05 [2.522] | 49 | 100 | △ 6-104656-0 |
| 58.98 [2.322] | 29.48 [1.161] | 60.24 [2.372] | 57.70 [2.272] | 44 | 90 | △ 5-104656-9 |
| 52.63 [2.072] | 26.31 [1.036] | 53.89 [2.122] | 51.35 [2.022] | 39 | 80 | △ 5-104656-8 |
| 46.28 [1.822] | 23.13 [.911] | 47.54 [1.872] | 45.00 [1.772] | 34 | 70 | △ 5-104656-7 |
| 39.93 [1.572] | 19.96 [.786] | 41.19 [1.622] | 38.65 [1.522] | 29 | 60 | △ 5-104656-6 |
| 33.58 [1.322] | 16.78 [.661] | 34.84 [1.372] | 32.30 [1.272] | 24 | 50 | △ 5-104656-5 |
| 27.23 [1.072] | 13.61 [.536] | 28.49 [1.122] | 25.95 [1.022] | 19 | 40 | △ 5-104656-4 |
| 20.88 [.822] | 10.43 [.411] | 22.14 [.872] | 19.60 [.772] | 14 | 30 | △ 5-104656-3 |
| 14.53 [.572] | 7.26 [.286] | 15.79 [.622] | 13.25 [.522] | 9 | 20 | △ 5-104656-2 |
| 8.18 [.322] | 4.08 [.161] | 9.44 [.372] | 6.90 [.272] | 4 | 10 | △ 5-104656-1 |
| 65.33 [2.572] | 32.66 [1.286] | 66.59 [2.622] | 64.05 [2.522] | 49 | 100 | 1-104656-0 |
| 58.98 [2.322] | 29.48 [1.161] | 60.24 [2.372] | 57.70 [2.272] | 44 | 90 | 104656-9 |
| 52.63 [2.072] | 26.31 [1.036] | 53.89 [2.122] | 51.35 [2.022] | 39 | 80 | 104656-8 |
| 46.28 [1.822] | 23.13 [.911] | 47.54 [1.872] | 45.00 [1.772] | 34 | 70 | 104656-7 |
| 39.93 [1.572] | 19.96 [.786] | 41.19 [1.622] | 38.65 [1.522] | 29 | 60 | 104656-6 |
| 33.58 [1.322] | 16.78 [.661] | 34.84 [1.372] | 32.30 [1.272] | 24 | 50 | 104656-5 |
| 27.23 [1.072] | 13.61 [.536] | 28.49 [1.122] | 25.95 [1.022] | 19 | 40 | 104656-4 |
| 20.88 [.822] | 10.43 [.411] | 22.14 [.872] | 19.60 [.772] | 14 | 30 | 104656-3 |
| 14.53 [.572] | 7.26 [.286] | 15.79 [.622] | 13.25 [.522] | 9 | 20 | 104656-2 |
| 8.18 [.322] | 4.08 [.161] | 9.44 [.372] | 6.90 [.272] | 4 | 10 | 104656-1 |
| E | D | C | B | A | NUMBER OF POSITIONS | PART NUMBER |

THIS DRAWING IS A CONTROLLED DOCUMENT.

| | | | |
|--|--|---|--|
| DIMENSIONS: mm [INCHES] | TOLERANCES UNLESS OTHERWISE SPECIFIED: 0 PLC ± - 1 PLC ± - 2 PLC ± 0.13 [.005] 3 PLC ± - 4 PLC ± - ANGLES ± 0° 30' | DWN KATE HELM 08/07/91 CHK D. GORENC 8/12/91 APVD D. GORENC 8/12/91 | tyco Electronics Tyco Electronics Corporation Harrisburg, Pa 17105-3608 |
| MATERIAL: HOUSING: LCP, COLOR-BLACK POST: PHOS BRONZE HOLD DOWN: COPPER ALLOY | FINISH 1 5 9 10 | PRODUCT SPEC APPLICATION SPEC WEIGHT - | NAME HEADER ASSEMBLY, SURFACE MOUNT, AMP MODU 50/50 GRID (8.12 [.320] MATED HEIGHT) |
| CUSTOMER DRAWING | | SIZE A2 CAGE CODE 00779 DRAWING NO C=104656 | RESTRICTED TO - |
| SCALE 6:1 | | SHEET 1 OF 1 | REV J |