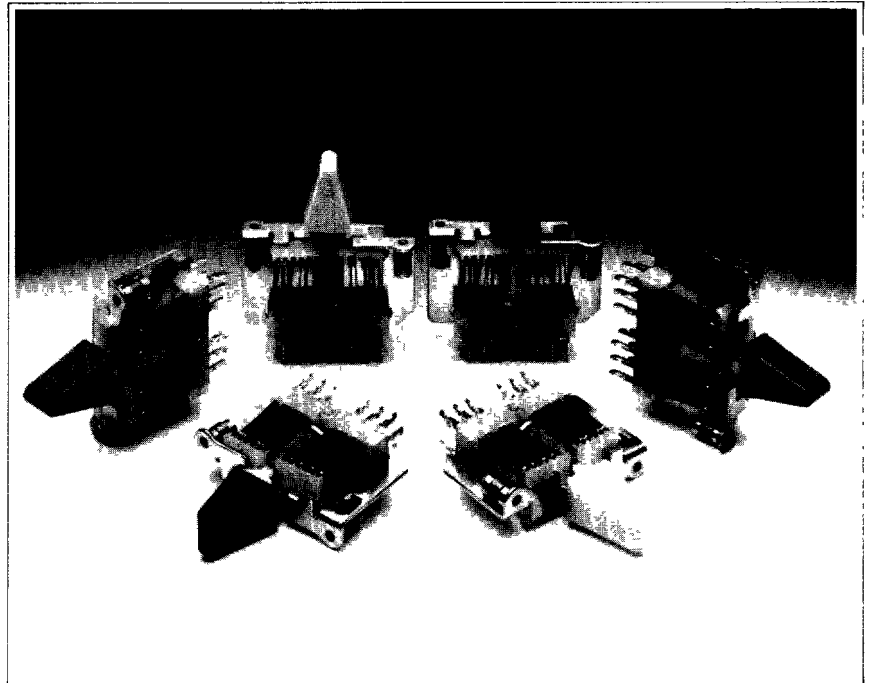


H22-101.



Description

Rugged lever switches available in two sizes accommodating a maximum of either 24 or 48 comb operated twin contacted springs in various switching combinations. The Keys are designed for close pitch panel mounting and have a positive toggle action to eliminate 'follow-through'. A choice of snap-on coloured handles is available for easy circuit identification.

Switching Action

Combinations of Locking, Non-locking and Stop functions available.

Spring Sets

Bifurcated contacts up to 24 or 48 springs enable a maximum of 4 or 8 changeover functions in either direction or 8 of 16 changeover functions in one direction. Details of other possible combinations are available on request.

**Contact Materials and Ratings
Fine Silver**

Suitable for AC or DC operation at up to 250V with a maximum current of 300mA. Contact power capacity limited to 75VA or 10W.

Silver-Gold plate

Suitable for AC or DC operation at up to 250V with a maximum current of 150mA AC or 100mA DC. Contact power capacity limited to 30VA or 5W.

Other contact materials available on request.

Insulation Resistance

Spring to Spring and Spring to Frame, greater than 1,000M Ω at 500V DC.

Contact Gap

Greater than 0.254mm for Make and Changeover types. Greater than 0.178mm for Make before Break types.

Contact Force

Not less than 15gm initially reducing to 10gm at end of life.

Mechanical Life Expectancy

Greater than 750,000 operations.

Handles

Snap-on British Telecom Type 18 handles with or without inserts are available in a range of colours.

Approval

Versions approved by British Telecom are known as 1000 Type or 3000 Type.

Mounting

The Key design allows panel mounting to the following minimum dimensions between centres:
Horizontal 15.87mm
Vertical 48.40mm (small)
22.15 (large)

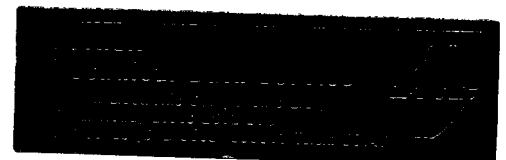
Standard fixing for small keys is provided by two 2.5mm screws and spacers supplied loose with each key. N.B. Keys supplied to British Telecom specifications do not include fixing screws and have 8BA fixings as do all large keys.

Terminations

Pre-tinned tags suitable for solder connections.

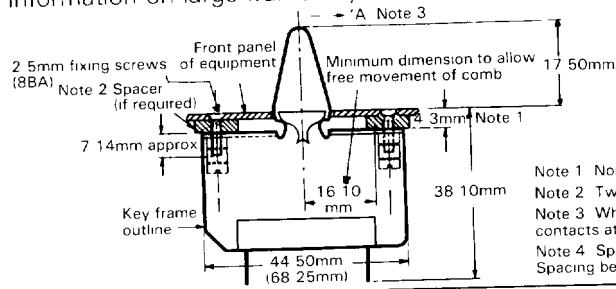
Standard Finish

Key Frames and captive nuts are zinc plated and passivated.



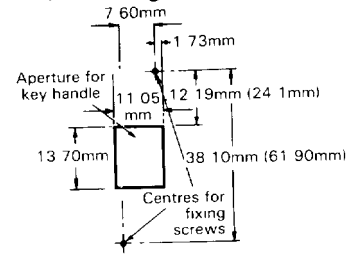
Panel cutout and mounting dimensions

Information on large frame keys is shown in brackets



- Note 1 Nominal panel thickness 1.6mm
 Note 2 Two spacers are supplied with each key
 Note 3 When key handle is operated in direction 'A' contacts at chamfer end are actuated
 Note 4 Spacing between horizontal centres 15.87mm
 Spacing between vertical centres 48.40mm (72.15mm)

Mounting details



Ordering Information (Small Frame Keys)

Table 1 Standard Keys

Action		Part Number
Left Hand (Chamfer End)	Right Hand	
L4C	L4C	80 100 110 432
L2C	L2C	80 100 110 232
N4C	N4C	80 100 220 432
N2C	N2C	80 100 220 232
N4C	L4C	80 100 210 432
N2C	L2C	80 100 210 232
L4C	S	80 100 100 532
L2C	S	80 100 100 332
N4C	S	80 100 200 532
N2C	S	80 100 200 332

Ordering Information (Large Frame Keys)

Table 1 Standard Large Keys

Action		Part Number
Left Hand (Chamfer End)	Right Hand	
L8C	L8C	80 210 111 932
N8C	L8C	80 210 211 932
N8C	N8C	80 210 221 932
L12M	L12M	80 210 111 902
N8C	S	80 210 201 972
L8C	S	80 210 101 972
L24M	S	80 210 101 962
N24M	S	80 210 201 962
L16C	S	80 210 101 982
N16C	S	80 210 201 982

Table 2 British Telecom Type 1000 Keys

British Telecom Ref	Action	Part Number
1001	N2C2K/L2C2K	80 002 311 011
1002	N4C/L4C	80 002 311 021
1003	N2C2K/L6M	80 002 311 031
1004	N2C2K/L4C	80 002 311 041
1005	N4C/L4K	80 002 311 051
1006	N4C/L2C2K	80 002 311 061
1007	N2C/L2C	80 002 311 071
1101	L2C2K/L2C2K	80 002 311 111
1102	L4C/L4C	80 002 311 121
1103	L6M/L6M	80 002 311 131
1104	L4C/L2C2K	80 002 311 141
1105	L4K/L4C	80 002 311 151
1108	L2C/L2C	80 002 311 181
1201	N2C2K/N2C2K	80 002 311 211
1202	N4C/N4C	80 002 311 221
1203	N2C/N2C	80 002 311 231
1301	L2C2K/S	80 002 311 311
1302	L4C/S	80 002 311 321
1303	L6M/S	80 002 311 331
1304	L4K/S	80 002 311 341
1305	L3C1K/S	80 002 311 351
1306	L2C3M/S	80 002 311 361
1307	L2C/S	80 002 311 371
1351	L8C/S	80 002 311 391
1401	N2C2K/S	80 002 311 411
1402	N4C/S	80 002 311 421
1403	N2C/S	80 002 311 431
1451	N8C/S	80 002 311 451

Table 2 British Telecom Type 3000 Keys

British Telecom Ref	Action	Part Number
3001	N8C/L8C	80 002 312 201
3002	N12M/L12M	80 002 312 211
3101	L8C/L8C	80 002 312 221
3102	L12M/L12M	80 002 312 231
3201	N8C/N8C	80 002 312 241
3202	N12M/N12M	80 002 312 251
3301	L8C/S	80 002 312 261
3302	L12M/S	80 002 312 271
3401	N8C/S	80 002 312 281
3402	N12M/S	80 002 312 291

- Notes
 L = Locking N = Non-Locking S = Stop
 M = Normally open B = Normally closed
 C = Changeover K = Make Before Break

Part numbers shown are for Keys only and with silver contacts, other combinations of switching action, contacts and materials can be supplied, details available on request

Handles with or without inserts are ordered separately, standard colours are Black, Ivory, Grey, Red, Blue, Maroon and Green

We reserve the right to change without prior notice the information contained in this leaflet

Health & Safety at Work etc Act 1974

Some of our products are capable of being operated by and capable of switching high voltages and/or currents. Care must therefore be exercised in the usage of such products



PED Limited

Exning Road, Newmarket, Suffolk CB8 0AX, England
 Tel (0638) 665161 Telex 81245 PEDLTD Fax (0638) 660718