

**nominal voltage:** 1,2V  
**max. charge voltage:** 1,5V

**capacity**  
 nominal : 2700mAh  
 minimum: 2400mAh  
 2250mAh

**max. continuous discharge current:** 2700mA  
 ambient temperature 20....50°C

**charge**  
 standard charge: charge current 240mA charge time 14hrs at 20°C  
 quick charge: 525mA 5hrs  
 fast charge: 2400mA 1,1hrs

recommended charge termination control parameters:  
 -dV: 5....10mV  
 dT/dt: 0,8....1°C per min  
 TCO: 40...50°C

trickle charge current: 20....100mA (recommended)

continuous overcharge: ≤ 100mA (less than 1 year)  
 no conspicuous deformation, no leakage

**internal resistance:** ≤ 30mOhms  
 at 1000Hz, battery fully charged

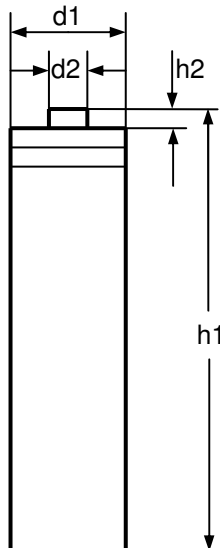
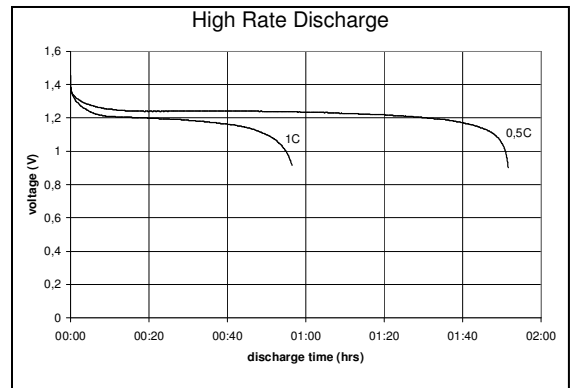
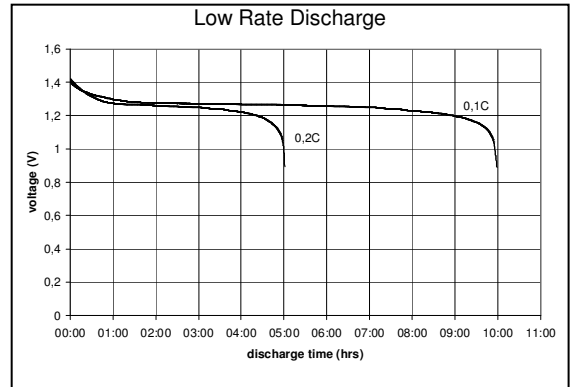
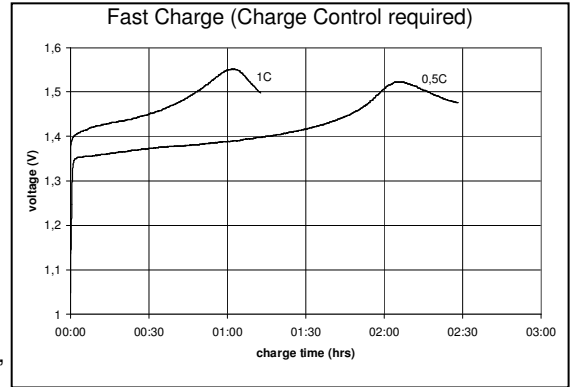
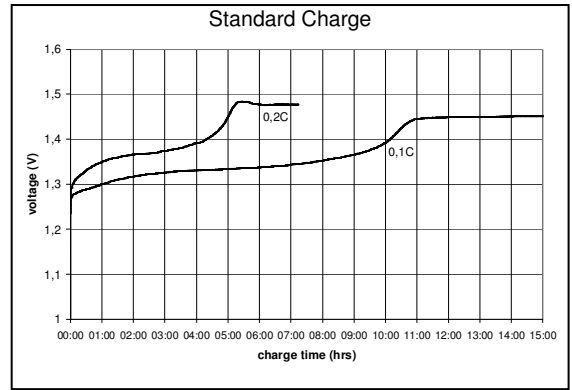
**life expectancy:** > 500 cycles IEC standard

**ambient temperature range:** 0....45°C  
 10....40°C  
 -20....50°C  
 -20....55°C  
 -20....45°C  
 -20....35°C  
 standard charge  
 fast charge  
 discharge  
 storage less than 30 days  
 storage less than 3 months  
 storage less than 1 year

conditions

at standard charge (0,1C / 20°C)

discharge at 0,2C  
 discharge at 0,2C  
 discharge at 1C  
 1,0V end discharge voltage  
 ambient temperature 20°C



**mechanical specifications**

cell dimensions  
 diameter d1: 14,1 - 0,5mm  
 diameter d2: 5,5 - 0,5mm  
 height h1: 50,4 - 1,0mm  
 height h2: 1,8 +/- 0,5mm  
 weight: approx. 30g

	specifications for model/type:	AA – NiMH 2850mAh
	Ansmann drawing number / part number:	5035201
	author / date:	Gramlich / 29.08.2007