

PAN-TY Metal Detectable Cable Ties

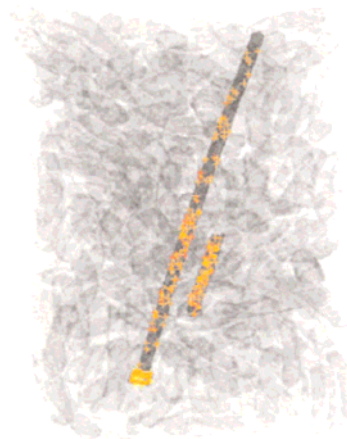
Product Bulletin SA-CTCB29 8/2007

PAN-TY ® Metal Detectable Cable Ties are designed to meet food, beverage, and pharmaceutical safety standards. Featuring metal impregnated material, these ties are identifiable by metal detectors and x-ray inspection equipment. Additionally, the distinct blue color of the ties facilitates quick visual detection in manufacturing environments. Designed for fastening cables and hoses in processing and packaging areas, these ties can be installed using a wide range of hand tools. To help further prevent contamination, the GT series of tools captures the cut-off tips of ties. The PAN-TY ® Metal Detectable Cable Ties and Installation Tools combine to deliver a complete bundling solution to help reduce product contamination and loss.

Key Features

Benefits

<i>Metal impregnated material</i>	Allows a cable tie or part of a cable tie to be identified by metal detectors or x-ray inspection equipment to help reduce product contamination and comply with industry standards
<i>Blue colour</i>	Allows visual identification of tie on conveyor belts and in products with distinct colour contrast
<i>One-piece design with locking wedge</i>	Provides low thread force for easy and reliable installation; improves productivity and prevents operator fatigue
<i>Curved, tapered tip</i>	Easy to pick-up from flat surfaces; allows faster initial threading to speed installation
<i>Smooth, round edges</i>	Safe and easy for installers to use; won't damage cable



Example x-ray image of metal detectable cable tie in finished product

Typical Manufacturing Applications

- Food, beverage and tobacco
- Pharmaceutical and personal healthcare
- Chemicals and compounds
- Tyre and airbag
- Packaging

Technical Information

Material	PANDUIT metal detectable nylon 6.6 cable tie material met industry standard testing by leading manufacturers of metal detectors and x-ray inspection equipment
Quality assurance	All cable tie packages contain a quality control number for complete product traceability; each lot passes metal detection as part of final product verification
Maximum operating temperature	85°C

Part Number	Length mm	Width mm	Thickness mm	Head Height mm	Head Width mm	Max. Bundle Diameter mm	Min. Loop Tensile Strength N	Recommended Tools‡	Std. Pkg. Qty.*
Miniature Cross Section									
PLT1M-C86	100	2.5	1.1	4.7	4.8	22	80	GTS, GTSL	100
Intermediate Cross Section									
PLT2I-C86	203	3.4	1.2	4.6	6.1	51	178	GTS, GTSL	100
Standard Cross Section									
PLT2S-C86	186	4.8	1.4	601	8.1	47	222	GTS, GTSL, GTH	100
PLT3S-C86	291	4.8	1.4	601	8.1	76	222		100
PLT4S-C86	366	4.8	1.4	601	8.1	102	222		100
Light-Heavy Cross Section (Straight Tip)									
PLT3H-L86	282	7.6	1.9	9.1	12.2	76	534	GTH	50
PLT4H-L86	366	7.6	1.9	9.1	12.2	102	534	GTH	50