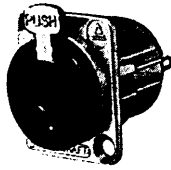


1/4" PHONE JACKS (continued)

LOCKING PHONE JACKS
SERIES E



Series E jacks provide stable, secure connections in panels where shock/vibration or accidental disconnect may occur. Plug locks-in automatically upon insertion; press "PUSH" tab to unlock and remove plug. Series E jacks have the same front panel appearance as Series E Q-G® audio connectors.

SPECIFICATIONS
MECHANICAL

Life: 10,000 cycles minimum.

ELECTRICAL

Insulation Resistance: 2 x 10⁶ MΩ at 500 V DC per MIL-STD-202, method 302 (initial).

Dielectric Withstanding Voltage: 1,000 V AC (rms).

ENVIRONMENTAL

Thermal Range: -55°C to +85°C (non-operating); -20°C to +65°C (operating).

Thermal Shock: Per MIL-STD-202, method 107.

Humidity: Per MIL-STD-202, method 106.

Salt Spray: Per MIL-STD-202, method 101.

MATERIAL

Shell: Die-cast zinc with satin nickel-plating.

Black chrome over nickel-plating on special order.

Insert and Latch: Thermoplastic polyester, UL 94V-O.

Latch Release: Nickel-plated die-cast zinc.

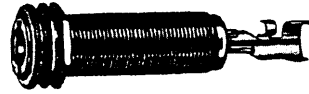
Contact Springs: Tin-plated spring tempered nickel silver.

Part Number	Description	Jack Schematic ¹	Typical Mating Plug ²
E111L	2-cond., open circuit	I	250
E112B	3-cond., double open circuit	IV	267

1 See Jack Schematics, pages 63 and 64
2 See plugs section

THICK PANEL PHONE JACKS

151



Jacks are standard 2- and 3-conductor phone jacks with extra long threaded bushing for mounting in panels/chassis up to 1.25 inches thick. Metal bushing virtually eliminates hum pick-up, and is ideal for electric guitar and speaker connections. Jacks mate with standard commercial phone plugs. See plug section for mating plugs. Jacks mount in a single .469 inch diameter hole. Rugged cable clamp protects connections from twisting and pulling stresses.

SPECIFICATIONS
MATERIAL

Mounting Bushing: Brass, nickel-plated with knurled flange.

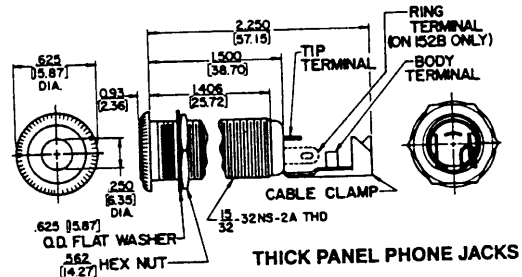
Insulation: Insulating spacer: XYP paper base phenolic. Insulator/Spring Mount: nylon.

Springs: Special alloy of spring nickel-silver.

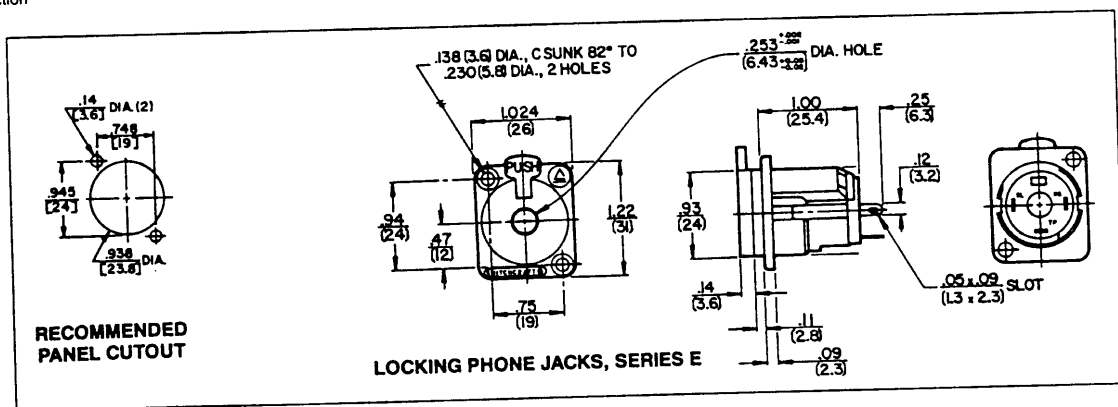
Terminals: Tip: nickel-silver. Ring: (Number 152B only) nickel-silver. Sleeve: Steel, tin-plated.

Hardware: Supplied with one, Number P10531 nickel-plated brass hex nut, and one, Number P1476 nickel-plated brass flat washer.

Part Number	Description	Jack Schematic ¹
151	2-conductor, open circuit	I
152B	3-conductor, open circuit	IV



THICK PANEL PHONE JACKS



RECOMMENDED PANEL CUTOUT

LOCKING PHONE JACKS, SERIES E

DIMENSIONS ARE FOR REFERENCE ONLY
Inch (mm)

NOTE: Contact your Switchcraft Representative for price and delivery.

All products shown in this catalog are covered by Switchcraft's limited lifetime warranty.

Registered trademark of Switchcraft, Inc.