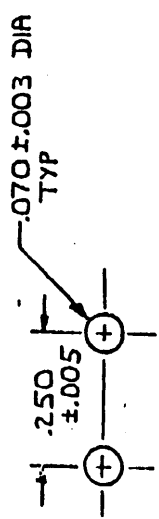
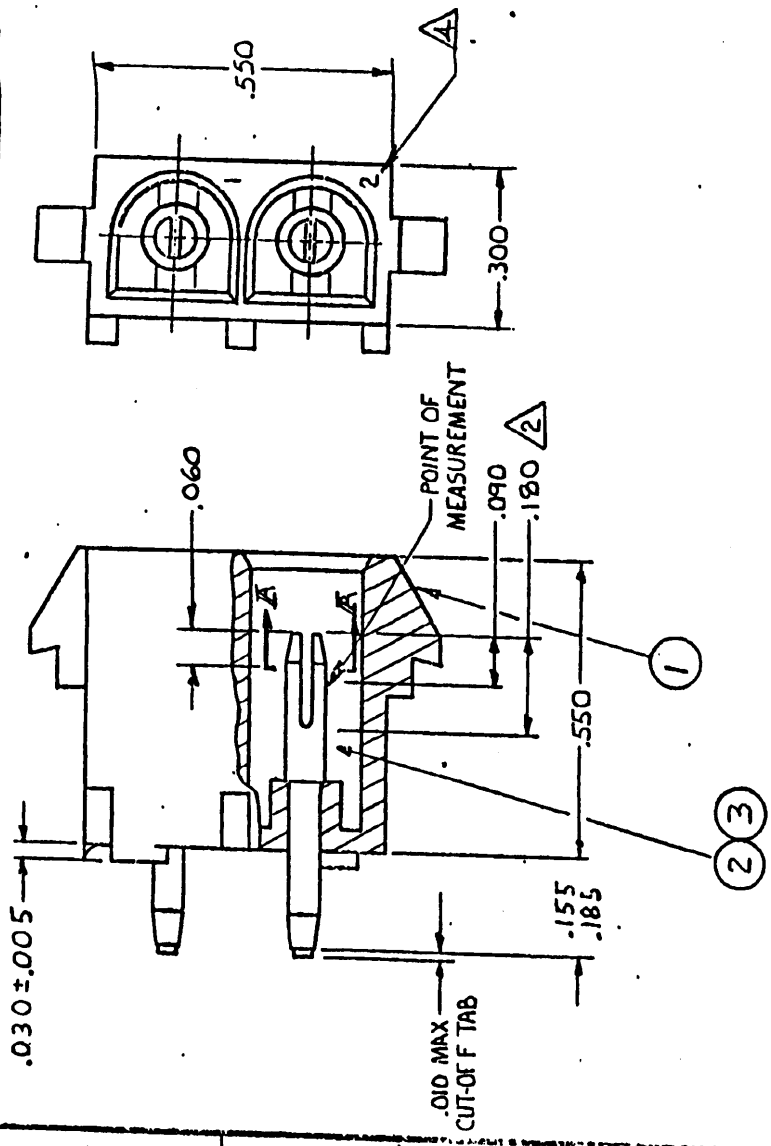
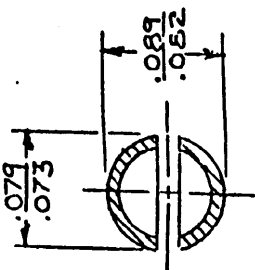


THIS DRAWING MADE IN THIRD ANGLE PROJECTION

THIS DRAWING IS UNPUBLISHED. RELEASED FOR PUBLICATION FEB. 5, 1982.  
 BY AMP INCORPORATED, HARRISBURG, PA. ALL INTERNATIONAL RIGHTS RESERVED. AMP PRODUCTS MAY BE COVERED BY U.S. AND FOREIGN PATENTS AND/OR PATENTS PENDING.



RECOMMENDED LAYOUT FOR  
 .062 THICK P.C. BOARD



SECTION A-A  
 SCALE 10:1

LOC	DIST	REVISIONS	DATE	APPROV
1	CM		7-1-82	
		E REDRAWN W/O CHG. M-7019		
		F ADDED DRAIN HOLES M-6877	8/10/82	DMS/DH
		G ADDED SECT. A-A M-7157	8/25/83	DMS/DH
		H REV PER ECN, M-7384	1/15/83	TIB/SC
		HI RESTORATION	4/28/83	NJ
		J REVISED PER CM-1520	5-16-83	PA
		K REVISED PER EC 0730-4064-93	2-11-85	LMS
		L REVISED PER EC 0730-4181-93	7-29-85	LMS
		M REV PER EC 0730-0202-94	11-28-85	JH
		N REV PER EC 0730-0111-95	8-22-85	JH

1. PARTS COMPLY WITH AMP SOLDERABILITY SPEC. 109-11-3.  
 CONTACT IS PLATED OVERALL WITH .000050 NICKEL, THEN  
 .000030 GOLD OVER CONTACT LENGTH INDICATED AND MATTE TIN  
 ON SOLDER TAIL END.  
 2. MATES WITH HOUSING 350777.  
 3. CIRCUIT IDENTIFICATION CHARACTERS ARE ADJACENT TO  
 THE INDICATED CAVITIES, BUT LOCATION AND  
 ORIENTATION MAY DIFFER FROM PRINT.

GOLD	PHOS. BRZ.	2	CONTACT	3	350786-2
	NYLON 94V-0	1	HOUSING	1	
	PHOS. BRZ.	2	CONTACT	2	350786-1
	NYLON 94V-0	1	HOUSING	1	
	MATERIAL	NO PER ASSEMBLY	ITEM NO	PART NO	

CONTRACT NO	AMP INCORPORATED Harrisburg, Pa.
UR M. Fisher 2-24-82	
CHK D. S. Heide 7/1/82	
APPR. G. E. Queller 1/1/82	
USCN APPD	
OTHER APPD	
NAME	PIN HEADER ASSEMBLY, UNIVERSAL MATE-N-LOK™, 2 CIRCUIT
SIZE	FSCM NO 00779
DRAWING NO	350786
SCALE	4:1
SHEET	