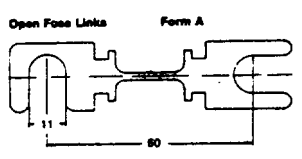




# Various special Fuse Links V-1e/86

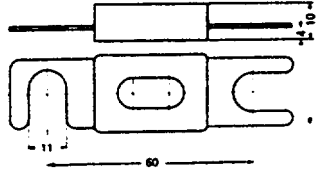
Fuse Links for battery powered industrial trucks.  
80 V DIN 43560/1

Open Fuse Links Form A,



Rating A	Art.-Nr.	kg/100
50		
63		
80		
100		
125		
160		
200	90 030 05	0,5
250		
300		
355		
425		

Enclosed Fuse Links Form B,

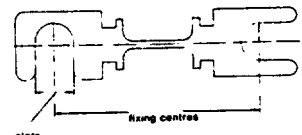


Rating A	Art.-Nr.	kg/100
50		
63		
80		
100		
125		
160		
200	90 058 05	1,9
250		
300		
355		
425		

**Test Specifications**

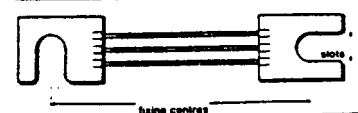
Load	Opening Time
150 %	> 1 Std., 1 Hour
180 %	< 1 Std., 1 Hour
250 %	0,8 - 10 Sec.
400 %	0,2 - 2 Sec.

Open Fuse of various dimensions



Contact pieces and fusing-elements in one piece.

Fixing centres mm	Slots mm	Rating A	Art.-Nr.	kg/100
70	7	35	90 051 02	0,2
		50		
		63		
80	9	35	90 052 02	0,4
		50		
		63		
		80		
95	11	80	90 038 02	0,6
		100		
		125		
		160		
		200		



When ordering to indicate: — Amp.  
— mm / fixing centres  
— mm / slots

Copper contact. Hard soldered fuse-wires. Surface nickel-plated.  
Minimum order quantity 100 pcs. of each required Amp. rating and design.

Slots mm	Rating A	Art.-Nr.	kg/100
7	35	90 001 02	0,5
	50		
	63		
9	35	90 002 02	0,8
	50		
	63		
	80		
11	80	90 003 02	1,4
	100		
	125		
	160		
	200		
14	160	90 004 02	3,1
	200		
	224		
	250		
	300		
	355		
17	355	90 005 02	6,5
	425		
	500		
	630		

**Test Specifications**

Load	Opening Time
160 %	> 1 Std., 1 Hour
180 %	< 1 Std., 1 Hour



SICHERUNGEN-BAU GMBH

Borker Straße 22 · Postfach 1940 · D-4670 Lünen

Telefon (02306) 7001-0 · Teletex 2306300 SIBALUE · Telegramm: SIBA D 4670 Lünen

Medium Time current characteristic

