

Features:

- BOTTOM DP and COMMA
- Grey face colour, White segment colour
- Fast reliable interconnection and mounting system without the need for a PCB
- Unique interlocking facility for accurate positioning of adjacent displays

- Position of the interlock common across the full range so that different digit sizes can be used within the same display
- Interlock dovetails have a light friction fit between units for ease of assembly
- Single font style across the full range (6 character heights available)
- Wide viewing angle

Font design

Product not shown
actual size



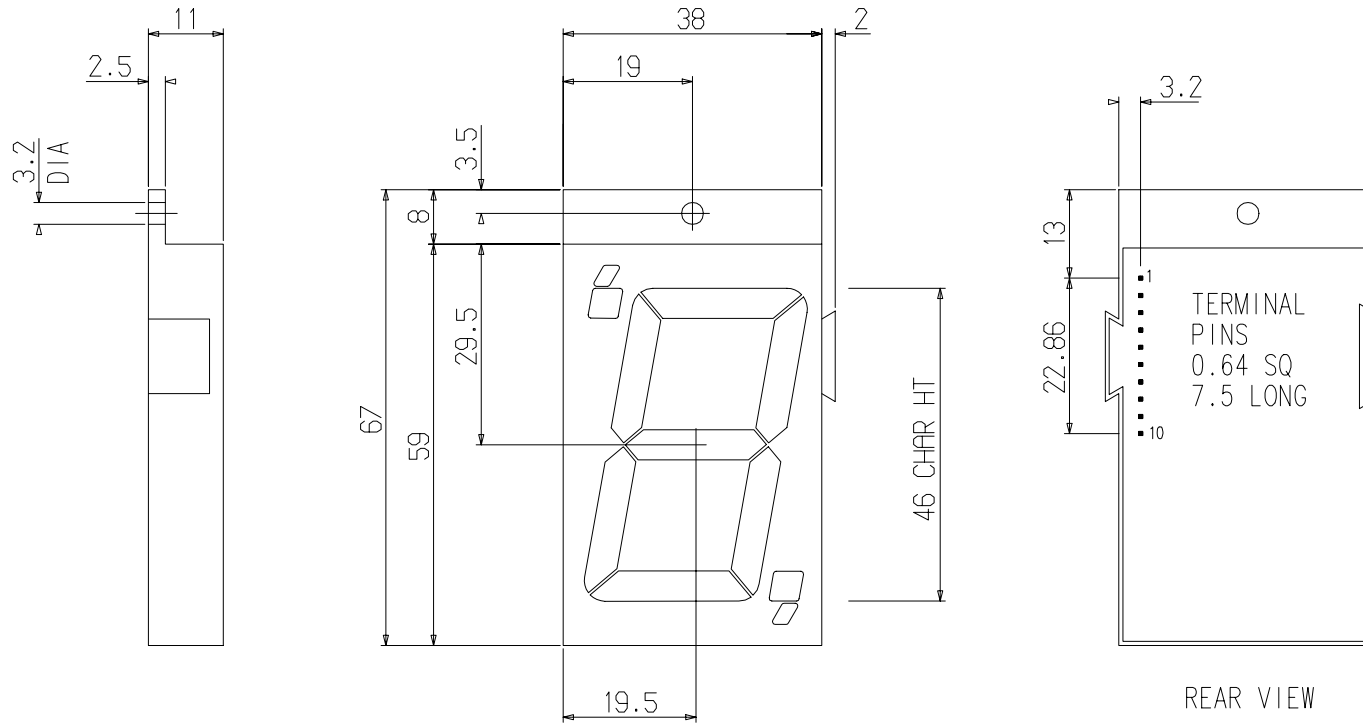
Electro / Optical Characteristics - I_F = 20 mA T_a = 25° C

Part Number - Common Cathode		Part Number - Common Anode		Emitting Colour	Wavelength Peak λ _p	Forward Voltage V _F		Luminous Intensity I _v	
Farnell	Forge Europa	Farnell	Forge Europa			typical	max	min	typical
366-5240	FEM-1801L0BGW			GaAlAs Red	660	5.55	6.00	-	72
366-5264	FEM-180130BGW	366-5252	FEM-180230BGW	HE Red	640	6.15	7.50	-	22
366-5276	FEM-180120BGW			Green	568	6.30	7.50	-	22
Units					nm	V		mcd per segment	

Maximum Ratings T_a = 25° C - Derate above 25° C

Characteristic	Condition	Symbol	Rating	Units
Pulse Forward Current	0.1 duty cycle @ 1KHz	I _{FP}	100	mA
DC Forward Current		I _F	25	mA
Reverse Voltage	I _R = 100 μA	V _R	5	V
Power Dissipation		P _D	85	mW
Operating Temperature		T _{opr}	- 25 to + 80	° C
Storage Temperature		T _{stg}	- 30 to + 85	° C
Lead soldering temperature	1.6 mm from body - max 3 seconds		260	° C

Package Outline and Diagram



Tolerance
± 0.25 mm unless stated

