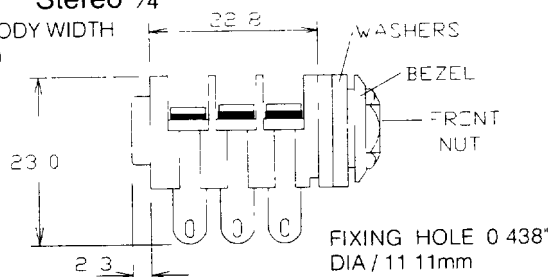
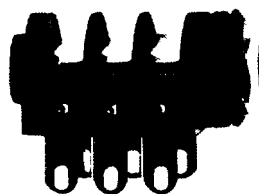
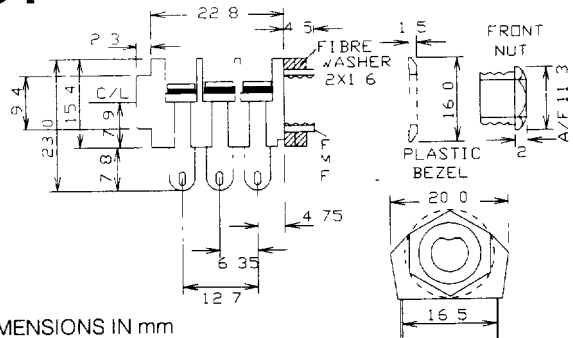


S4 Mono 1/4" Stereo 1/4"MAX BODY WIDTH
20.1mm

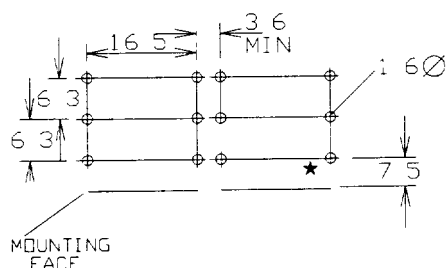
Mounting is effected by screwing the chrome facia nut (with plastic bezel) into a threaded plastic bush which protrudes from the body. Coloured bezels may be used. Contacts are NIAG alloy. The back of the socket is closed to prevent access through the socket. Ordering code as for S2. When ordering a mono type specify centre contact as 'N' e.g. S4/SNS/BLK. PC mounting versions - See below. OPTION S4P / Front Metal nut is replaced by a Matt Plastic Combined Nut / Bezel.

S4

S4 / BNB / PC-C

S4 WITH SOLDER TAGS.MAX PANEL
THICKNESS 4.3mm

DIMENSIONS IN mm

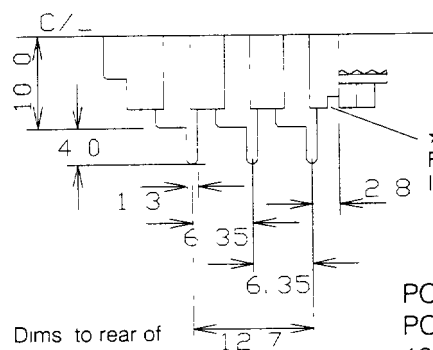


★ - NOTE Dims to rear of front panel depends on panel thickness e.g. For max panel of 4.3mm Then this Dim is 2.8mm For PC-A, A/S & B

S4 PRINTED CIRCUIT MOUNTING.

SOCKETS CAN BE SUPPLIED WITH TERMINALS DESIGNED FOR DIRECT MOUNTING INTO PRINTED CIRCUIT BOARDS. ORDER BY ADDING SUFFIX - PC - TO PART No. THE STANDARD PC VERSION IS TYPE A. IF OTHER VERSION IS REQUIRED SPECIFY BY A/S - B - C - D - E. e.g. S2-BBB-BLK/PC/C (For Type C.)

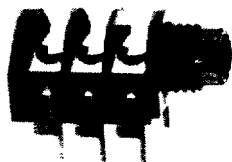
FRONT NUT S4 CHROME PLATED BRASS
OPTION S4P MATT FINISH PLASTIC



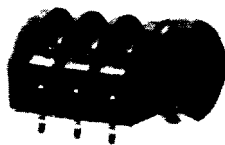
★★ - THIS RECESS IS TO FACILITATE MOUNTING IN FLOWSOLDER JIGS

PC TYPE A STD
PC MOUNTING
10mm TO C/L

PC VERSIONS A/S, B, C, D, & E ARE THE SAME AS FOR S2 (★ INCREASE TO 9.3mm. FOR C, D, E).

S2 - SPECIAL VERSIONS. (Minimum Quantity 1,000 Pcs. / Variant).

SPECIAL NOSE



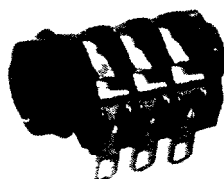
PC-C KINKED LEGS



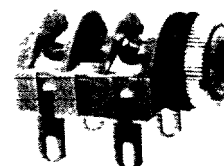
REVERSED CONTACT



FASTON TAGS



GOLD CONTACTS



VARIOUS COLOURS