

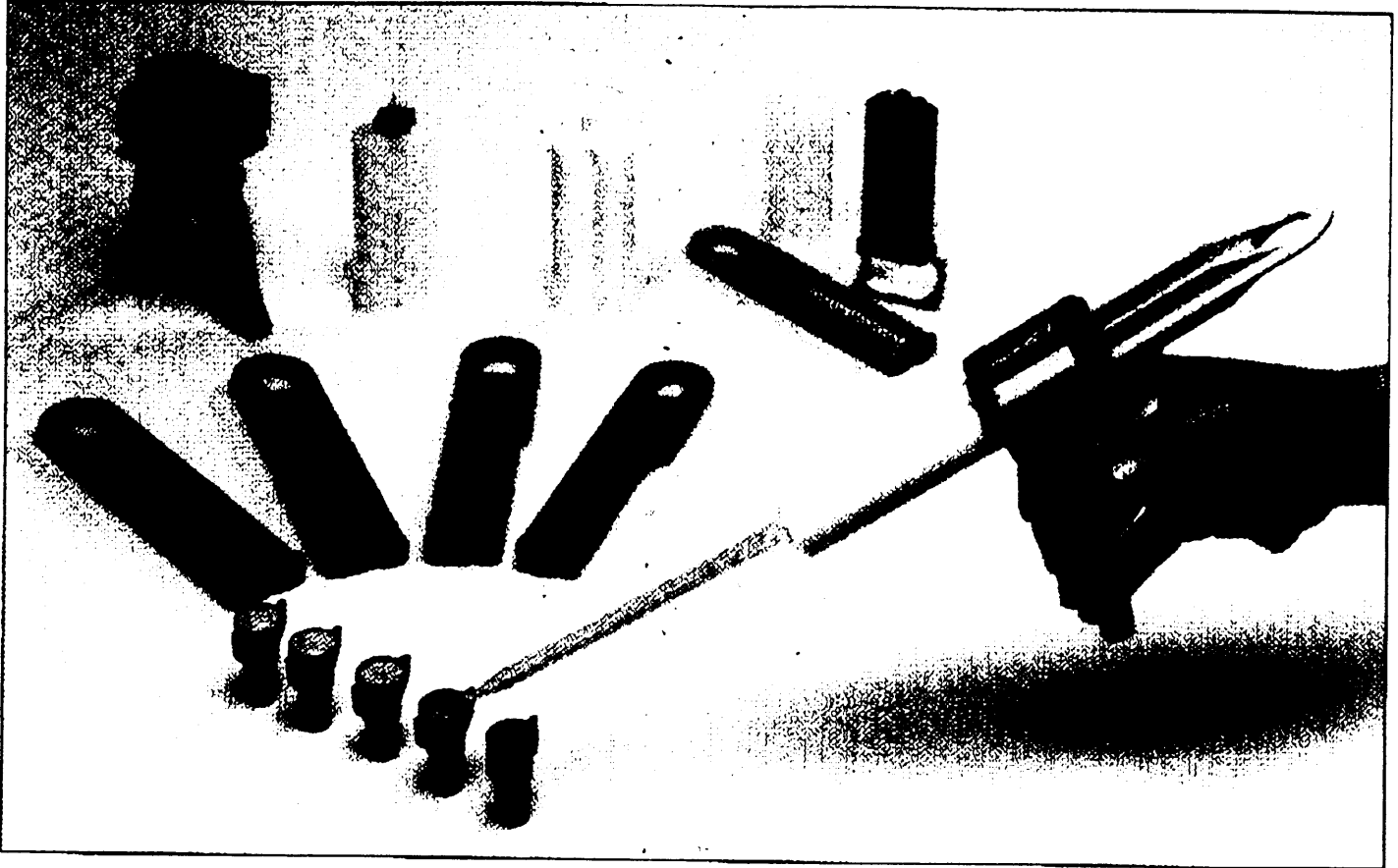
3 PACES

APPLICATION NOTES

705 9450, 9462, 9474, 9486

TAH

BULLETIN D-03



TAH PLUS™ 50 ml MANUAL DISPENSER

For the TAH Plus™ 50 ml Cartridge System, TAH offers its new manual dispenser. Compared to competitive dispensers, this versatile and more compact design is superior. Consider these advantages:

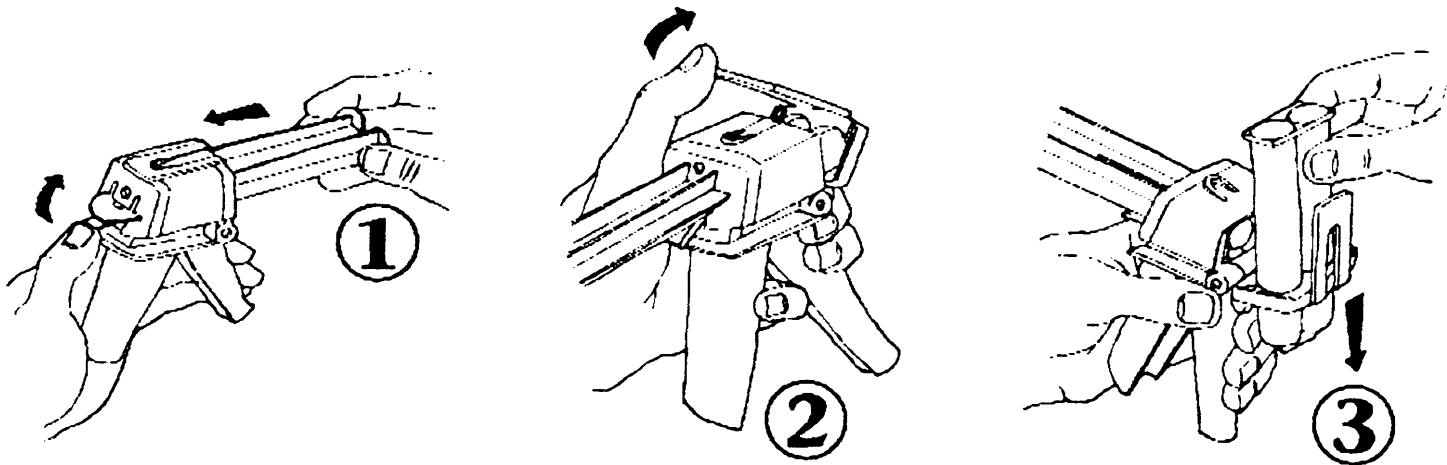
- **Better Ergonomics** - lighter and more compact
- **Lower Cost and Better Delivery**
- **More Versatile** - will accept all ratios and other cartridge sizes (i.e. 30 ml)
- **Trouble-free** - engineered to eliminate cartridge cracking

This durable and well-balanced design provides trouble-free point of use dispensing. It is designed to fit the TAH Plus™ cartridges and competitive bayonet systems. Custom colors and distinctive labeling are available upon request.

See back for part numbers and instructions.

1 of 3

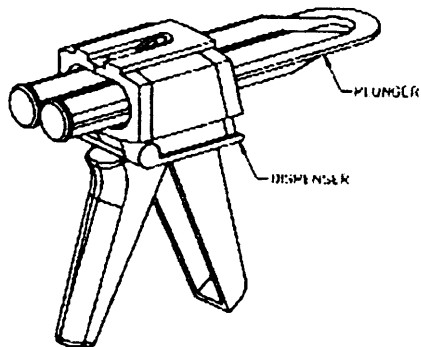
INSTRUCTIONS: As easy as 1, 2, 3 . . .



PART NUMBERS

Complete Dispensers:

PART NO.	DESCRIPTION
DK-104	Dispenser + 1:1 Plunger
DK-105	Dispenser + 2:1 Plunger
DK-106	Dispenser + 4:1 Plunger
DK-107	Dispenser + 10:1 Plunger



Replacement Parts:

PART NO.	DESCRIPTION
DK-101	Dispenser Only
D-102	1:1 Plunger
D-103	2:1 Plunger
D-104	4:1 Plunger
D-105	10:1 Plunger

TAH Industries, Inc.
 107 North Gold Drive
 Robbinsville, NJ 08691
 U S A
 Tel: 800-257-5238
 609-259-9222
 Fax: 609-259-0957
 Website: www.tahusa.com

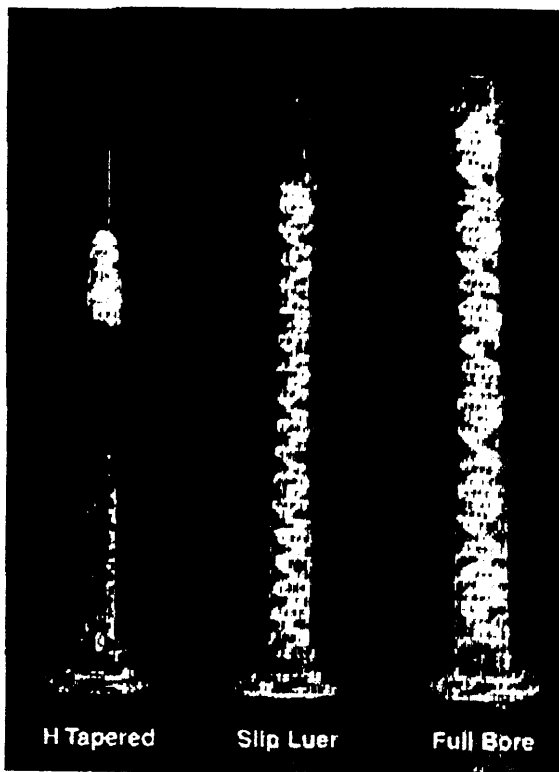
TAH Europe, Inc.
 2 Francis Court
 Wellingborough Rd. Rushden
 Northamptonshire NN10 6AY
 Great Britain
 Tel: 44 (0) 1933 413233
 Fax: 44 (0) 1933 413194
 Website: www.tahcurope.com

Distributed By:

190 SERIES

Spiral Mixers Bayonet Nozzle • Plastic

September 1997



H Tapered

Slip Luer

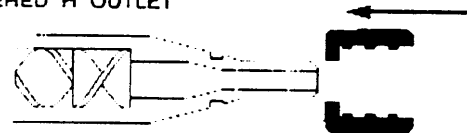
Full Bore

The **190 Series** Spiral Mixer features a standard bayonet connection. This type of mixer is common on 50 ml two-component cartridges, which are offered by the major adhesive manufacturers. Typical applications include mixing epoxies, urethanes, acrylics and silicones

Four diameters are available with three different outlet styles. The Slip Luer is our standard offering. The Full Bore ensures maximum flow with minimal back pressure.

The H-Tapered Outlet is offered where precise placement of the adhesives is required. In order to connect Luer needles or extensions, the "H" style mixers are molded with a new interlocking connection. This permits the attachment of an optional Locking Hub. The Locking Hub (Part No. 160-HUB) must be ordered separately.

TAPERED "H" OUTLET

Optional Locking Hub
push on and rotate

SPECIFICATION

Elements: Polyplas™
Housing: Polypropylene

Test Kit Available

Contains an assortment of mixers, as well as needles and Locking Hubs.
Part No. 190-TK

PART NO.	ELEMENT			HOUSING			
	Diameter		Mixing Elements	Length		Outlet	Retained Volume - ml
	inches	mm		inches	mm		
190-312H	0.125	3.18	12	2.1	5.3	H Tapered	0.2
190-324H	0.125	3.18	24	3.4	8.6	H Tapered	0.4
190-408H	0.187	4.75	8	2.1	5.3	H Tapered	0.4
190-408BT	0.187	4.75	8	1.6	4.1	Full Bore	0.4
190-416	0.167	4.75	16	3.4	8.6	Slip Luer	0.9
190-416H	0.187	4.75	16	3.4	8.6	H Tapered	0.9
190-416BT	0.187	4.75	16	2.9	7.4	Full Bore	0.8
190-507	0.213	5.40	7	2.3	5.8	Slip Luer	0.9
190-517	0.213	5.40	17	4.4	11.2	Slip Luer	1.9
190-521	0.213	5.40	21	5.3	13.5	Slip Luer	2.4
190-612	0.250	6.35	12	3.9	9.9	Slip Luer	1.9
190-612H	0.250	6.35	12	3.9	9.9	H Tapered	1.9
190-612BT	0.250	6.35	12	3.3	8.4	Full Bore	1.8
190-620	0.250	6.35	20	5.9	15.0	Slip Luer	3.0
190-620H	0.250	6.35	20	5.9	15.0	H Tapered	3.0
190-620BT	0.250	6.35	20	5.3	13.5	Full Bore	2.8

TAH Industries, Inc.

107 North Gold Drive
Robbinsville, NJ 08691
U.S.A.

Tel: 800-257-5238

609-259-9222

Fax: 609-259-0957

TAH Europe, Inc.

2 Francis Court
Wellingborough Rd, Rushden
Northamptonshire NN10 6AY
Great Britain

Tel: 44 (0) 1933 413233

Fax: 44 (0) 1933 413194

Distributed By: