

Customer Information Sheet

DRAWING No.: M80-500XX22

SHEET 2 OF 2

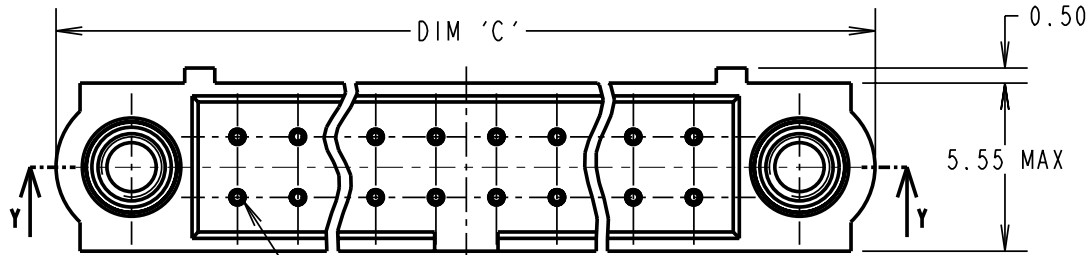
IF IN DOUBT - ASK

©

NOT TO SCALE

THIRD ANGLE PROJECTION

ALL DIMENSIONS IN mm



ORDER CODE:
M80-500XX22

No. OF CONTACTS
06, 10, 14, 20,
26, 34, 42, 50

FINISH
22 - SELECTIVE GOLD

SPECIFICATIONS:

MATERIAL:
MOULDING = GLASS-FILLED PPS,
UL94V-0, BLACK
CONTACT = PHOSPHOR BRONZE
JACKSCREW = STAINLESS STEEL

FINISH:
CONTACT = 0.75µ GOLD ON CONTACT AREA,
3µ 90/10 TIN/LEAD ON TAILS

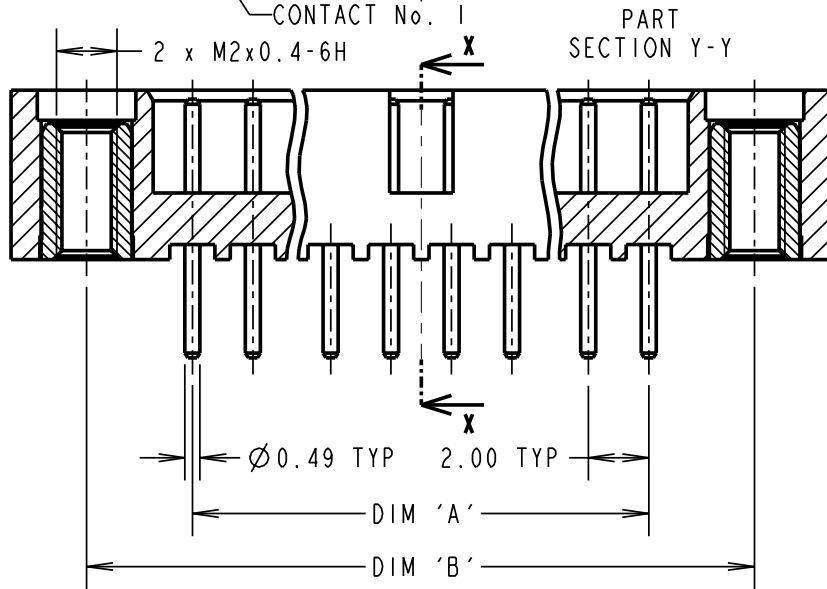
ELECTRICAL:
CURRENT RATING AT 25°C = 3.0A MAX
CURRENT RATING AT 85°C = 2.2A MAX
WORKING VOLTAGE = 120V AC/DC
VOLTAGE PROOF = 360V AC/DC
CONTACT RESISTANCE = 25 mΩ MAX
INSULATION RESISTANCE = 100 MΩ MIN

MECHANICAL:
DURABILITY = 500 OPERATIONS

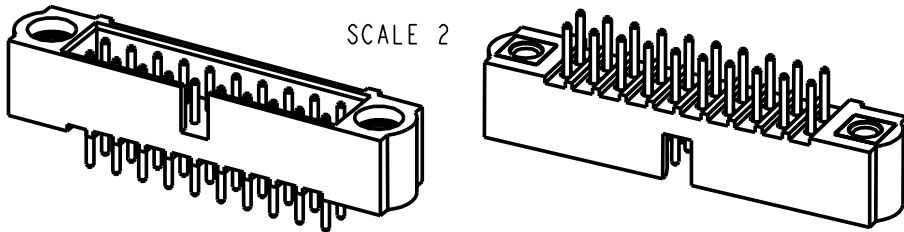
ENVIRONMENTAL:
TEMPERATURE RANGE = -55°C TO +125°C

PACKING:
TUBE

FOR COMPLETE SPECIFICATION, SEE
COMPONENT SPECIFICATION C005XX
(LATEST ISSUE)



NOTES:
1. RECOMMENDED PCB HOLE
SIZE = Ø0.65mm MIN.



| ASSEMBLY PART No. | No. OF CONTACTS | DIM 'A' | DIM 'B' | DIM 'C' |
|-------------------|-----------------|---------|---------|---------|
| M80-5000622 | 6 | 4.00 | 11.00 | 16.00 |
| M80-5001022 | 10 | 8.00 | 15.00 | 20.00 |
| M80-5001422 | 14 | 12.00 | 19.00 | 24.00 |
| M80-5002022 | 20 | 18.00 | 25.00 | 30.00 |
| M80-5002622 | 26 | 24.00 | 31.00 | 36.00 |
| M80-5003422 | 34 | 32.00 | 39.00 | 44.00 |
| M80-5004222 | 42 | 40.00 | 47.00 | 52.00 |
| M80-5005022 | 50 | 48.00 | 55.00 | 60.00 |

| | | | |
|-------------------------|------|----------|--------|
| WJB | A | 05.06.03 | ---- |
| NAME | ISS. | DATE | C/NOTE |
| APPROVED: P. D. COLLINS | | | |
| CHECKED: M. G. PLESTED | | | |
| DRAWN: W. J. BOURNE | | | |
| CUSTOMER REF.: | | | |
| ASSEMBLY DRG: | | | |

HARWIN

THIS DRAWING AND ANY INFORMATION OR DESCRIPTIVE MATTER SET OUT HEREON ARE CONFIDENTIAL AND COPYRIGHT PROPERTY OF THE HARWIN GROUP AND MUST NOT BE DISCLOSED, LOANED, COPIED OR USED FOR MANUFACTURING, TENDERING OR FOR ANY OTHER PURPOSE WITHOUT THEIR WRITTEN PERMISSION.

TOLERANCES

X. = ±1mm
X.X = ±0.25mm
X.XX = ±0.10mm
X.XXX = ±0.01mm
ANGLES = ±5°
UNLESS STATED

MATERIAL:

SEE ABOVE

FINISH:

SEE ABOVE

S/AREA:

mm²

TITLE:

JACKSCREW DATAMATE
DIL VERTICAL PC TAIL
MALE ASSEMBLY

DRAWING NUMBER:

M80-500XX22

SHT
2
OF 2

HARWIN INC
U.S.A.

TEL: (812) 542 2546
FAX: (812) 542 2541

HARWIN PLC
U.K.

TEL: 023 9237 0451
FAX: 023 9231 4590

HARWIN PTE
SINGAPORE

TEL: 65 6779 4909
FAX: 65 6779 3868