



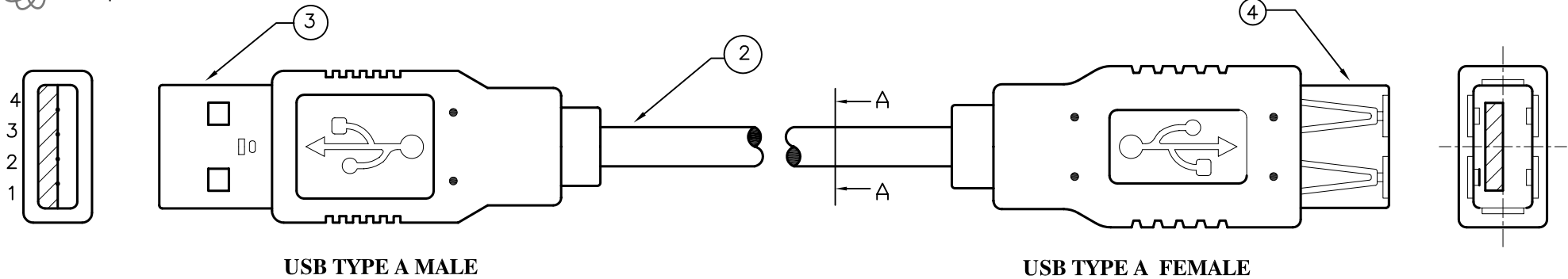
ALL RIGHTS RESERVED. NO PORTION OF THIS PUBLICATION, WHETHER IN WHOLE OR IN PART CAN BE REPRODUCED WITHOUT THE EXPRESS WRITTEN CONSENT OF SPC TECHNOLOGY.

SPC-F005.DWG

REVISIONS

DOC. NO. SPC-F005 * Effective: 7/8/02 * DCP No: 1398

DCP #	REV	DESCRIPTION	DRAWN	DATE	CHECKD	DATE	APPRVD	DATE
1906	A	RELEASED	EO	04/17/06	TL	05/25/06	HO	05/25/06

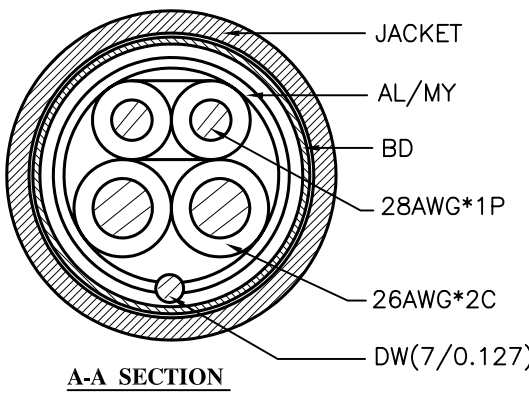


USB TYPE A MALE

USB TYPE A FEMALE

SPC TYPE No.	LENGTH
SPC20062	72±1 [1829±25.4]
SPC20061	120±2 [3048±50.8]

PIN OUTS		
USB A MALE	WIRE COLOR	USB A FEMALE
1	RED	1
2	WHITE	2
3	GREEN	3
4	BLACK	4
SHELL		SHELL



A-A SECTION

Specifications:

- Molded connector end requirements: PVC – 45P, Platinum gray
- Cable:
 - [28AWG (7/0.12)*1P+26AWG(7/0.163)*2C+AL/MY+DW(7/0.127)+65%BD(16/5/0.1)TIN
 - Insulation Wire One: FO-PE, OD=0.84±0.05mm
 - Color: White & Green
 - Insulation Wire Two: SR-PVC, OD=φ1.0±0.07MM
 - Color: Black & Red
 - Jacket: 80°C 80p PVC, OD =5.0±0.15mm
 - Color: Platinum gray
- Connector: USB A Male, Plate With Gold Insulation Color: White
- Connector: USB A Female, Plate With Gold Insulation Color: White

DISCLAIMER:
ALL STATEMENTS AND TECHNICAL INFORMATION CONTAINED HEREIN ARE BASED UPON INFORMATION AND/OR TESTS WE BELIEVE TO BE ACCURATE AND RELIABLE. SINCE CONDITIONS OF USE ARE BEYOND OUR CONTROL, THE USER SHALL DETERMINE THE SUITABILITY OF THE PRODUCT FOR THE INTENDED USE AND ASSUME ALL RISK AND LIABILITY WHATSOEVER IN CONNECTION THEREWITH.

TOLERANCES:
UNLESS OTHERWISE SPECIFIED, DIMENSIONS ARE FOR REFERENCE PURPOSES ONLY.

DRAWN BY:	DATE:
EKLAS ODISH	04/17/06
CHECKED BY:	DATE:
THOMAS LEE	05/25/06
APPROVED BY:	DATE:
HISHAM ODISH	05/25/06

DRAWING TITLE: USB 2.0 Extension Cable, USB TYPE A Male to Female			
SIZE	DWG. NO.	ELECTRONIC FILE	REV
A	TA-742	TA-742.DWG	A
SCALE: NTS	U.O.M.: INCHES [mm]	SHEET: 1 OF 1	