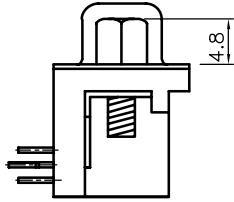
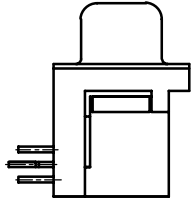


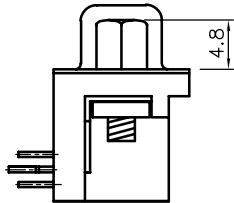
5504F1-XXS-01-XX-XX



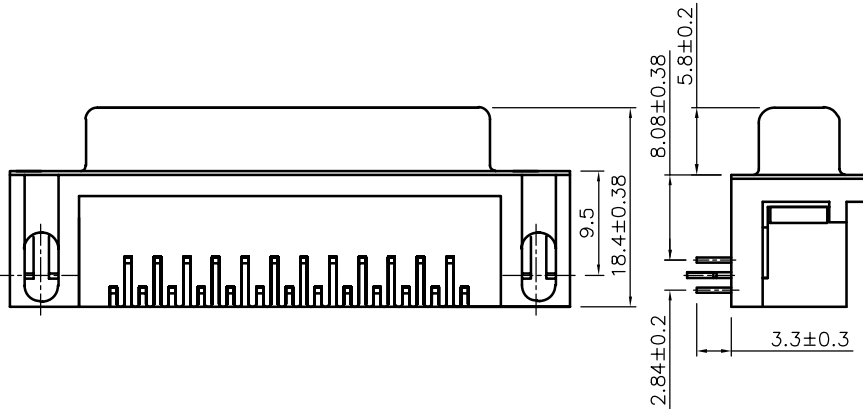
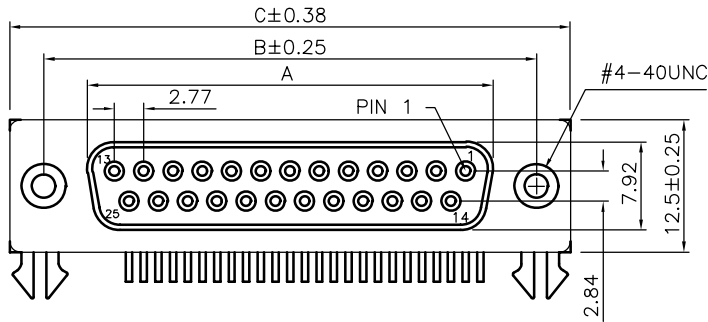
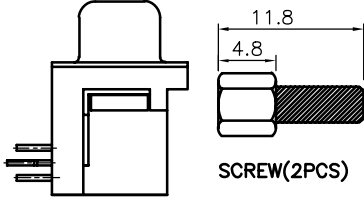
5504F1-XXS-02-XX-XX



5504F1-XXS-02A-XX-XX



5504F1-XXS-02B-XX-XX



Pos	A	B	C
9	16.33	24.99	30.81
15	24.66	33.32	39.14
25	38.38	47.04	53.04
37	54.83	63.50	69.32

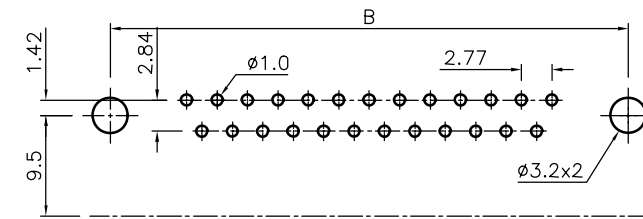
Specifications:

Current Rating:3.0A AC/DC
 Voltage Rating:250V AC/DC
 Contact Resistance:30m ohm. max.
 Insulation Resistance:5,000M ohm. min.
 Withstanding Voltage:1,000V AC For One Minute
 Operating Temperature Range:-40°C ~ +85°C
 Material and Finish
 Insulator:PBT(UL 94V-0)
 Contact:Copper Alloy
 Plating:Gold Plated on Contact Area,
 Tin Plated on Solder Tail.
 Shell:Metal Iron With Nickel Plated

How To Order

5504F1-XXS-XX-XX-XX

- Blank:Black(Standard Color)
- YL:Yellow;BU:Blue;GN:Green.
- 01:Full Gold plated
- 03:Selective Gold Plated
- 01:Board Lock/Hex Screw
- 02:Rivet W/Board Lock
- 02A:Rivet W/Board Lock/Hex Screw
- 02B:Rivet W/Board Lock/
Attached Hex Screw
- S:Female
- No.Of Positions
- 8.08mm Footprint



P.C.B. Layout

RoHS Compliant

E				DRAWN: Cel King	GENERAL TOLERANCE: .X=±0.2 .XX=±0.15	DESCRIPTION: D-SUB Female 8.08mm Footprint Right Angle Type	SIZE A4
D							
C				APPROVAL: Mike Wu	SCALE:	PART NO: 5504F1-XXS-XX-XX-XX	D
B	09-Jul-2008	ECN-CN080708	Huali		SHEET: 1 / 1		
A	13-Aug-2005	(PC0052)	Cel King	PROJECTION:			
REV	DATE	FILE	BY				