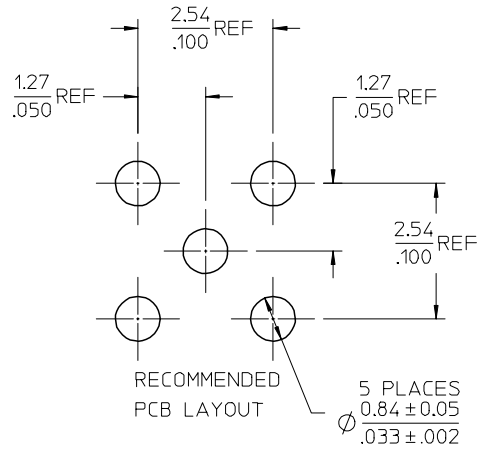
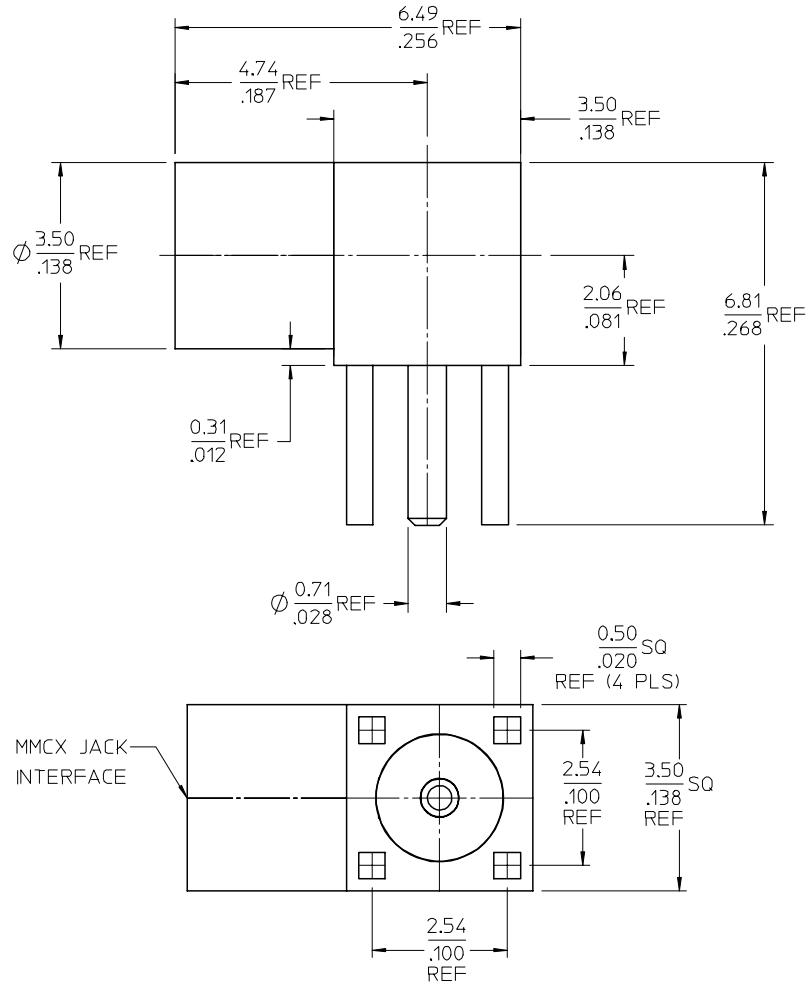
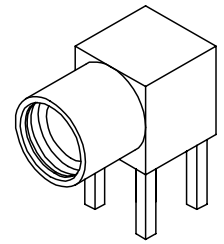


MATERIALS AND FINISHES

BODY BRASS  
PLATED GOLD

CENTER CONTACT BERYLLIUM COPPER  
PLATED GOLD

INSULATOR TEFLON



RECOMMENDED  
PCB LAYOUT

5 PLACES  
 $\phi 0.84 \pm 0.05$   
 $\phi 0.33 \pm 0.02$

MMCX JACK  
INTERFACE

ES-73599-0000-016

INTERFACE

SPECIFICATION

DESCRIPTION

73415-1002	P/N 73415-1001, ONE PER BAG
73415-1001	PER COMMERCIAL REQUIREMENTS, BULK
73415-1000	PER MILITARY REQUIREMENTS, BULK
PART NUMBER	PLATING AND PACKAGING

CHG: ADDED P/N  
73415-1002

EC NO: URF 2007-0264

DRWN: IFLAHERY 2007/01/09

CHKD: SHAH 2007/01/09

APPR: JIMENER 2007/01/09

REV D1

QUALITY SYMBOLS

$\nabla=0$

$\nabla=0$

GENERAL TOLERANCES (UNLESS SPECIFIED)	
mm	INCH
4 PLACES ± ---	± ---
3 PLACES ± ---	± ---
2 PLACES ± ---	± ---
1 PLACE ± ---	± ---
ANGULAR ± 2 °	

DRAFT WHERE APPLICABLE  
MUST REMAIN  
WITHIN DIMENSIONS

DIMENSION STYLE	
MM/IN	
DRAWN BY	DATE
JM	2005/07/22
CHECKED BY	DATE
JM	2005/07/22
APPROVED BY	DATE
JDW	2005/07/22
MATERIAL NO.	
SIZE	

SCALE	DESIGN UNITS	THIRD ANGLE PROJECTION
	METRIC	
MMCX JACK, R/A, PCB		
50 OHMS		
MMCX-J/PCB		
MOLEX INCORPORATED		
DOCUMENT NO.	SHEET NO.	
SD-73415-100	1 OF 1	