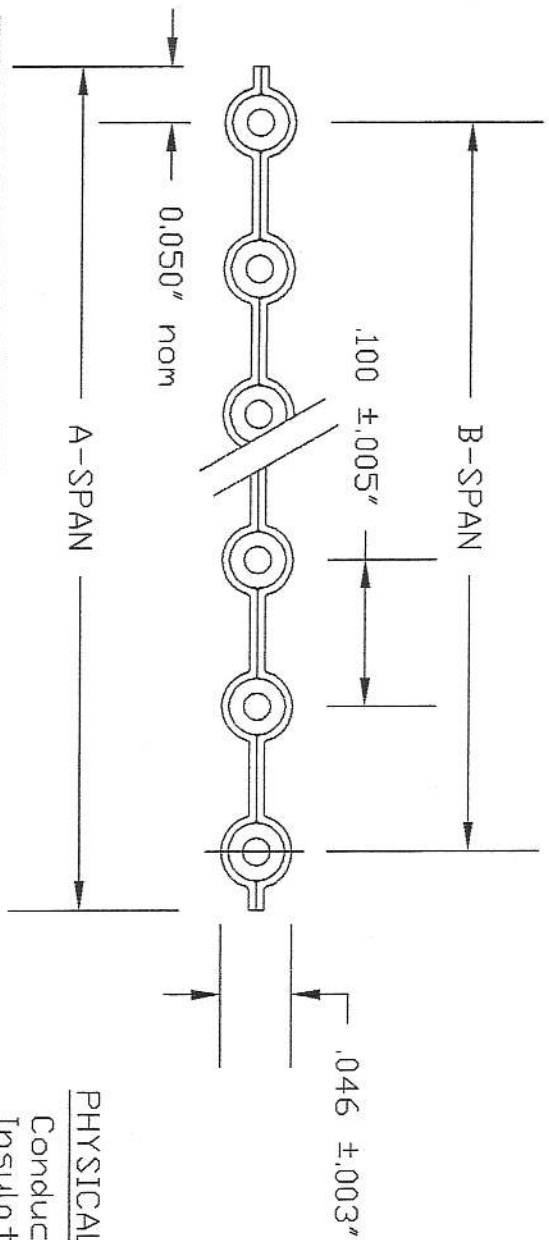


# PRELIMINARY



Part Number	Count	A-Span, Nominal Inches (mm)	B-Span Inches (mm)
135-2607-304	4	0.40 10,16	0.300 ±.015 7,62 ±.38
135-2607-306	6	0.60 15,24	0.500 ±.015 12,70 ±.38
135-2607-307	7	0.70 17,78	0.600 ±.015 15,24 ±.38
135-2607-308	8	0.80 20,32	0.700 ±.015 17,78 ±.38
135-2607-310	10	1.00 25,40	0.900 ±.015 22,86 ±.38
135-2607-312	12	1.20 30,48	1.100 ±.015 27,94 ±.38
135-2607-314	14	1.40 35,56	1.300 ±.015 33,02 ±.38
135-2607-316	16	1.60 40,64	1.500 ±.015 38,10 ±.38
135-2607-318	18	1.80 45,72	1.700 ±.015 43,18 ±.38
135-2607-320	20	2.00 50,80	1.900 ±.020 48,26 ±.51
135-2607-324	24	2.40 60,96	2.300 ±.020 58,42 ±.51

### PHYSICAL

Conductors: 26 awg 7/34 Tinned Copper  
 Insulation: .010" PVC  
 Color Code: Brn,Red,Drq,Yel,Grn,Blu,Vio,Gry, Wht,Blk, and repeat.  
 Laminate: (2) .005" Clr PVC  
 Temperature: 105° C

### ELECTRICAL

Impedance: 140 Ohms  
 Capacitance: 10 pF/ft @ 1MHz  
 Prop Delay: 1.4 ns/ft  
 Current Rating: 1.7 A  
 Insulation Res: 10<sup>10</sup> Ohms - 10 ft minimum  
 Voltage: 300 V

APPROVALS  
 UL Style 20130

**ORIGINAL**

ISS.	DATE	CDT	JAC	SIG.
B	20/08/07	EDDN	1446	JAC
A	20/08/07	ORIGINAL	JAC	

Q. NO.	CUSTOMER	TITLE	DRAWING NO.	MM
	AMPHENDL LTD. RONSEY MIL. EST., GREATBRIDGE RD., RONSEY, HANTS, SO51 0HK	3-C Colour Coded Cable 0.100" Pitch 26-7 awg	135-2607-3XX	SCALE N.T.S.
	LIMITS UNLESS OTHERWISE STATED: .XXX ± ANGLES ±	FOR EXPLANATION OF DIMENSIONS TOLERANCES, NOTES ETC. SEE BS308.	AS SPECIFICATION	SHEET 1 OF 1
	CUSTOMER REF:			

09 081 2007