

## TECHNICAL CHARACTERISTICS

### SPECIFICATION

- >Rating: 50mA, 12VDC
- >Contact Resistance:
  - Initial: 100mOHM max.
  - After Life Test: 20HM max.
- >Insulation Resistance: min. 100MOHM at 500VDC
- >Dielectric Strength: 250VAC for 1 minute
- >Stroke: 0.25 + 0.2 mm / - 0.1 mm

### MATERIAL

- >Cover: Stainless Steel
- >Stem: LCP UL 94V-0
- >Frame: LCP UL 94V-0, color Black
- >Contact: Stainless Steel with silver cladding
- >Terminal: Brass with silver plating

### SOLDERING INFORMATION

- >Terminal in THT version
- >Wave 260°C 10sec. max
- >Hand soldering under 350°C for 3 sec. max

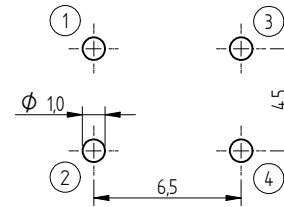
### ENVIRONMENTAL

- >Storage condition: -40°C ~ +85°C
- >Operation condition: -40°C ~ +85°C
- >Compliance: Lead Free, ROHS, Reach

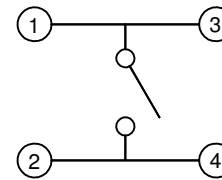
### PACKAGING INFORMATION

>Tube

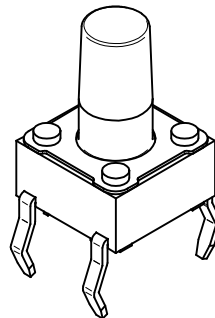
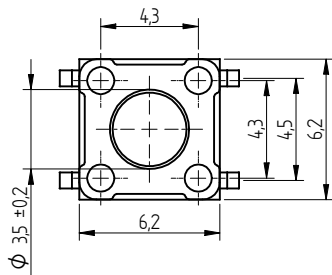
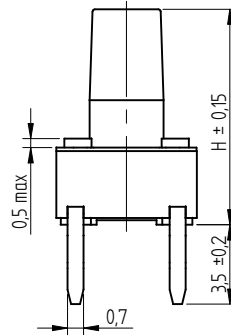
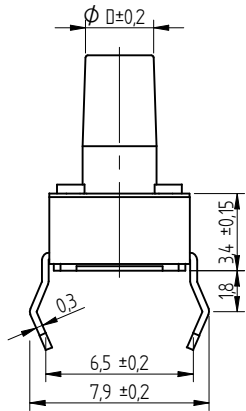
PN	Force	Color of Stem	Life cycle	- 043		- 050		- 070		- 095		- 130	
				H	Ø D	H	Ø D	H	Ø D	H	Ø D	H	Ø D
430 186 xxx 916	160g ± 50gf	Black	1.000.000										
430 156 xxx 926	260g ± 50gf	White	200.000	4.3	3.5	5.0	3.5	7.0	3.0	9.5	3.0	13.0	3.0
430 156 xxx 936	360g ± 50gf	Salmon	200.000										



P.C.B. MOUNTING PLAN



SCHEMATIC



		Projection		GENERAL TOLERANCE		Basic material				
				.x = +/- 0,2 .xx = +/- 0,15						
				Date	Name	DESCRIPTION				
				Drawn	09-09-14	Jelisarow	SwTact			
				Checked			WS-TST 6x6mm Switch, THT version			
				Würth Elektronik eiCan		Scale	5:1	Position		SIZE
						Drawing.- No. 4301x6xxx9x6				A4
REV	FILE	DATE	BY	EDV NO	4301x6xxx9x6.dft		System: Solid Edge V20			