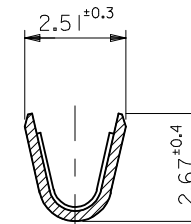
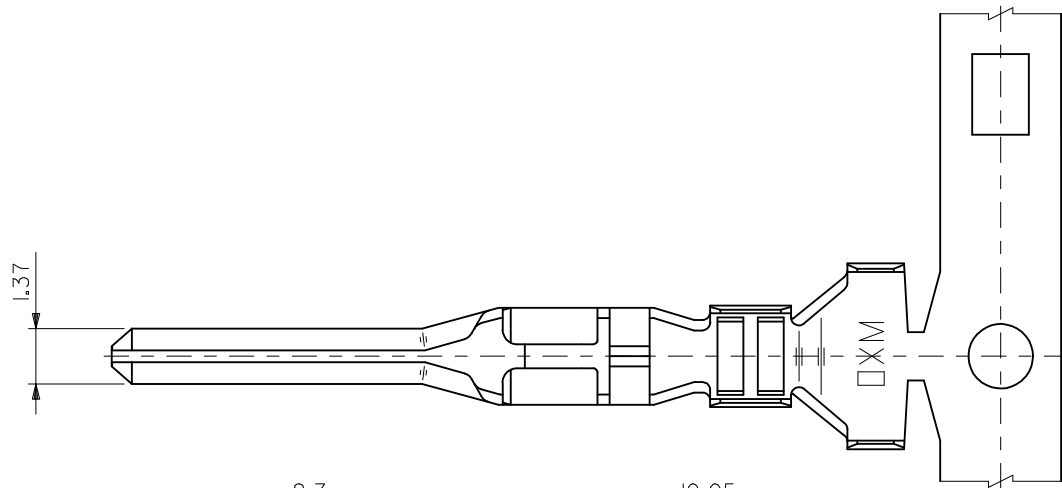
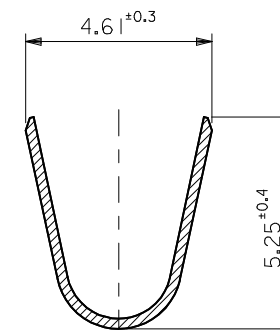


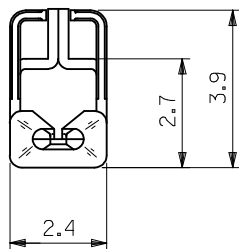
10 9 8 7 6 5 4 3 2 1



断面 A-A
SECT.A-A



断面 B-B
SECT.B-B



注記
NOTES

- 適合ハウジング : 51139シリーズ
APPLICABLE HOUSING : 51139 SERIES
- 材料 : 銅合金, 錫メッキ (t=0.25)
MATERIAL : COPPER ALLOY, TIN PLATED (t=0.25)
- リテーナー使用時 : $\phi 2.5$ MAX.
WHEN RETAINER USING : $\phi 2.5$ MAX.

適用電線範囲
WIRE RANGE AWG #16-22
被覆外径
INS. RANGE $\phi 2.0-3.4$

50599-8000	連鎖状 CHAIN
MATERIAL NO.	端子形状 FORM
MODEL NO.	50599-8*00

REVISED EC NO: J2009-1355 DRWN:NAKAMURA 2008/12/16 CHKD:T. HARUYAMA 2008/12/16 APPR:NUKITA 2009/01/14	DESCRIPTION A	GENERAL TOLERANCES (UNLESS SPECIFIED)		DIMENSION STYLE MM ONLY		SCALE ---	DESIGN UNITS METRIC	THIRD ANGLE PROJECTION	
		10 UNDER	±0.2	DRAWN BY T. ASAKAWA	DATE '96/10/16	TITLE 3.96 WIRE TO WIRE CONN. CRIMP PIN			
		10 OVER 30 UNDER	±0.25	CHECKED BY Y. MIZUNO	DATE '96/10/16	APPROVED BY M. FUKUSHIMA '96/10/16			
		30 OVER	±0.3	MATERIAL NO.		MOLEX INCORPORATED			
ANGULAR ±3 °		DRAFT WHERE APPLICABLE MUST REMAIN WITHIN DIMENSIONS		SEE TABLE		DOCUMENT NO. SD-50599-001		SHEET NO. 1 OF 1	
SIZE A3		THIS DRAWING CONTAINS INFORMATION THAT IS PROPRIETARY TO MOLEX INCORPORATED AND SHOULD NOT BE USED WITHOUT WRITTEN PERMISSION							