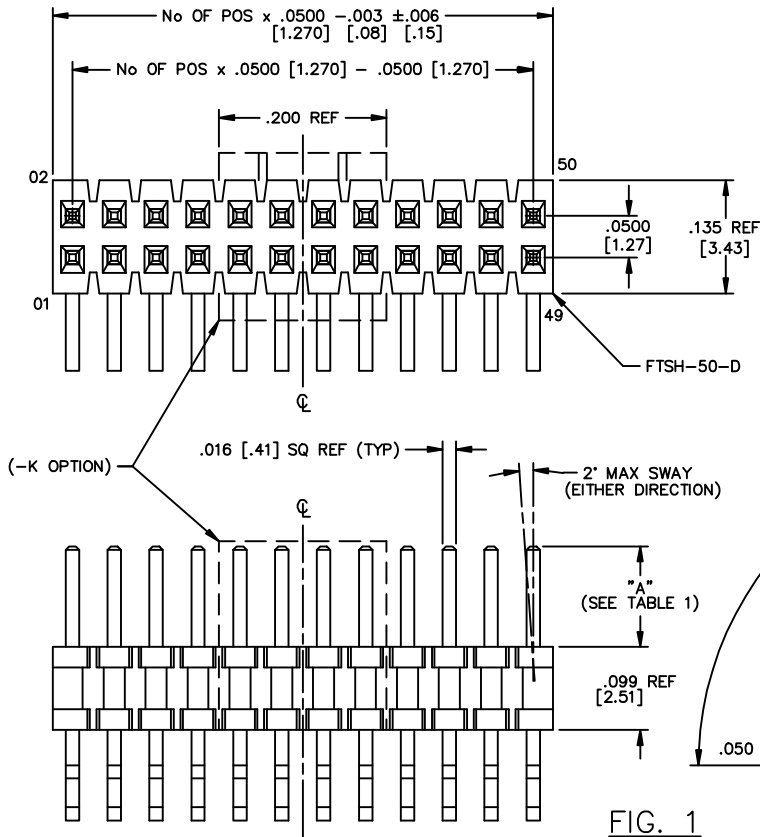


- NOTES:
1. TERMINALS TO BE SHEARED TO MEET DIMENSION SPECIFICATION.
 2. PARTS MAY BE CUT TO POSITION.
 3. MINIMUM PUSHOUT FORCE: .5 LB.
 4. NOTE DELETED
 5. EJ OPTION IS NOT AVAILABLE AS OF REVISION AG. APPLICABLE VIEWS ARE REMAINING FOR REFERENCE TO BUILD INTERNAL ASP ORDERS ONLY. THIS OPTION WAS FOR EXISTING BUSINESS ONLY. ANY EXISTING CUSTOMERS WILL HAVE PART NUMBERS SETUP AS INTERNAL ASP'S.
 6. .003" [.08"] MAX BURR ALLOWANCE
 7. MAX CUT FLASH: .010 [.25]

DIMENSIONS ARE IN INCHES		TOLERANCES ARE:	
ONE PLACE DECIMALS ± .1	[2.54]	THREE PLACE DECIMALS ± .005	[.13]
TWO PLACE DECIMALS ± .01	[.25]	FOUR PLACE DECIMALS ± .0010	[.025]
		ANGLES	± 1°

TITLE: .050 x .050 C.L. DOUBLE HORIZONTAL TERMINAL STRIP
 FTSH-1XX-XX-XXX-D-XX-XX
 DWG NO: FTSH-1XX-XX-XXX-D-XX-XX
 SHEET 1 OF 3



FTSH-1XX-XX-XXX-D-XX-XX

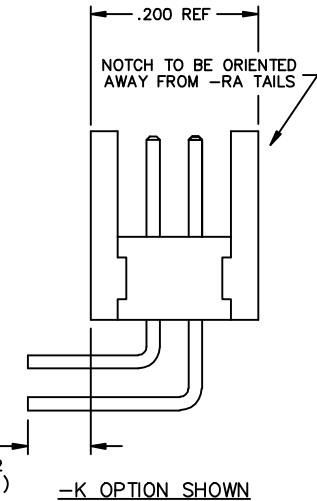
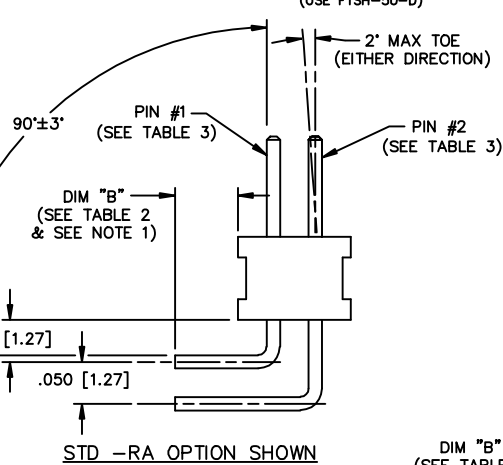
- No OF POS PER ROW
 -02 THRU -50
- POST HEIGHT
 -01: .120 [3.05]
 -02: .075 [1.91]
 -03: .065 [1.65] MIN
 -04: .150 [3.81]

- PLATING
 -L: LIGHT SELECTIVE (USE T-1S15-XX-L)
 -F: FLASH SELECTIVE (USE T-1S15-XX-F)
 -S: SELECTIVE (USE T-1S15-XX-S)
 -SM: HEAVY SELECTIVE GOLD, MATTE TIN TAIL (USE T-1S15-XX-S)
 -LM: LIGHT SELECTIVE GOLD, MATTE TIN TAIL (USE T-1S15-XX-L)
 -FM: FLASH SELECTIVE GOLD, MATTE TIN TAIL (USE T-1S15-XX-F)
 -H: HEAVY (USE T-1S15-XX-H)
 -LTL: LIGHT TIN SELECTIVE, TIN/LEAD TAILS; (FOR -RA OPTION ONLY, USE T-1S15-64-LTL AND T-1S15-63-LTL)

- OPTIONS
 -ES: END SHROUDS (-02 & -03 LEAD STYLE ONLY- SEE FIG. 2) (9 POS PER ROW MIN)
 -EL: SHROUD LOCK (-02 & -03 LEAD STYLE ONLY- SEE FIG. 4) (9 POS PER ROW MIN) (USE ONLY WHEN MATING WITH CLP)
 -EP: GUIDE POST (-02 & -03 LEAD STYLE ONLY- SEE FIG. 5) (9 POS PER ROW MIN) (USE ONLY WHEN MATING WITH CLP)
 -K: KEYING SHROUD (-01 LEAD STYLE ONLY- SEE FIG. 1) (POS 05, 08, 10, 13, 15, 17, 20, 25 ONLY) (USE ONLY WITH -RA TAIL OPTION)
 -EJ: EJECTOR SHROUD (SEE NOTE 5)

- TAIL OPTION
 -RA: RIGHT ANGLE
 -FC: FLEX CARD (-01 LEAD STYLE ONLY, FOR USE WITH FCF)
 -FE: FLEX CARD ELEVATED (RIGHT ANGLE ONLY) (-01 LEAD STYLE ONLY, FOR USE WITH FCF)

- ROW SPECIFICATION
 -D: DOUBLE ROW (USE FTSH-50-D)



POST HEIGHT	"A"
-01	.120 [3.05]
-02	.075 [1.91]
-03	.065 [1.65]
-04	.150 [3.81]

OPTIONS	"B" ± .010
NONE, -RA, -RA-K	.090 [2.29]
-EP, -ES, -EL	.120 [3.08]
-EJ	.135 [3.43]
-FC	.150 [3.81]
-FE (SEE NOTE)	.283 [7.19]

TAIL OPTION	PIN #1	PIN #2
-RA	T-1S15-64-XX	T-1S15-63-XX
-RA-K	T-1S15-64-XX	T-1S15-68-XX
-FC	T-1S15-07-XX	T-1S15-08-XX
-FE	T-1S15-03-XX	T-1S15-03-XX

PROPRIETARY NOTE
 THIS DOCUMENT CONTAINS INFORMATION CONFIDENTIAL AND PROPRIETARY TO SAMTEC INC. AND SHALL NOT BE REPRODUCED OR TRANSMITTED TO OTHER DOCUMENTS OR DISCLOSED TO OTHERS OR USED FOR ANY PURPOSE OTHER THAN THAT FOR WHICH IT WAS OBTAINED WITHOUT THE EXPRESSED WRITTEN CONSENT OF SAMTEC INC.

MATERIAL:
 INSULATOR: BLACK LIQUID CRYSTAL POLYMER, 30% GLASS FILLED
 TERMINAL: PHOSPHOR BRONZE, ALLOY NO. 510, GRADE A, FED. SPEC. QQ-B-750, SPRING TEMPER

samtec

520 PARK EAST BLVD. NEW ALBANY, INDIANA 47150
 PHONE (812) 944-6733 P.O. BOX 1147
 CODE 55322

MADE BY: BRATCHER 8-17-95

FTSH-1XX-XX-XXX-D-XX-XX
 SHEET 1 OF 3