

10 9 8 7 6 5 4 3 2 1

PART NUMBER LEGEND

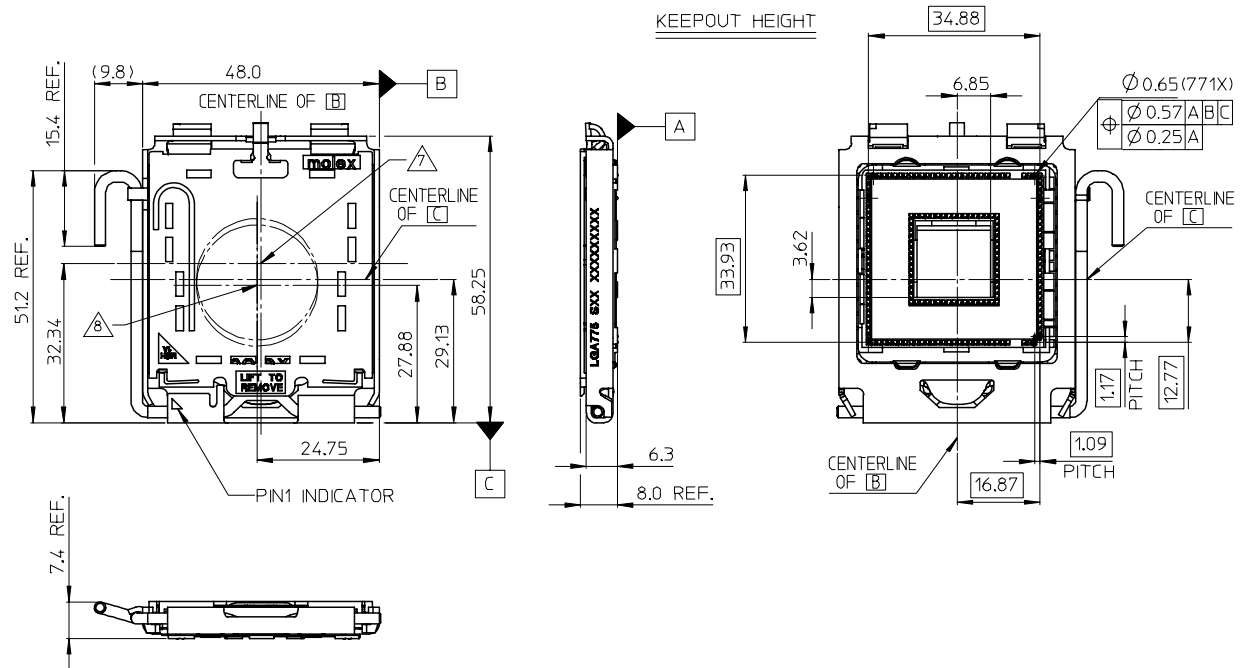
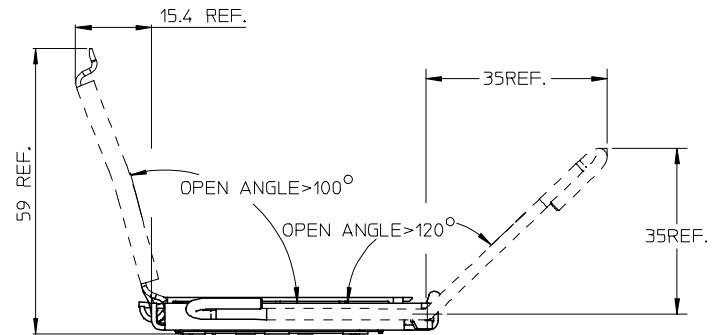
7531920 X X
 SOLDERBALL: 0 - EUTACTIC
 5.6 - LEADFREE
 AU THICKNESS: 1 - 15 u" Au
 2 - GOLDFLASH
 3 - 10 u" Au

NOTES:

1. MATERIAL

HOUSING : LCP UL 94V-0 COLOUR: BLACK
 TERMINALS: COPPER ALLOY
 PICK & PLACE COVER: LCP, COLOUR: BLACK
 LOAD PLATE: STAINLESS STEEL
 STIFFENER PLATE: STAINLESS STEEL
 LEVER: STAINLESS STEEL
 SOLDERBALL :SEE PART NUMBER TABLE

- 2. PLATING: SEE PART NUMBER LEGEND FOR MIN GOLD ON CONTACT AREA. 1.27 um MIN NICKEL UNDERPLATE.
- 3. DIMENSIONS ARE TO THE CENTER OF LANDS OF MATING PACKAGE.
- 4. DIMENSIONS ARE TO THE CENTER POINTS OF CONTACT.
- 5. DATE CODE MARKING:SEE SHEET2/3.
- 6. MINIMUM OPEN ANGLE TO RELEASE.
- 7. CENTER OF CPU PACKAGE/SOCKET HOUSING CAVITY.
- 8. CENTER OF MASS OF SOCKET.
- 9. PRODUCT SPECIFICATION PS-75319-002 APPLIES.
- 10. PACKAGE SPECIFICATION PK-75319-001 APPLIES.
- 11. THE PARTS 75319***5 COMPLIANT TO RoHS DIRECTIVE 2002/95/EC AND ELV 2000/53/EC.



PART NUMBER SOCKET WITH DSL AND PICK AND PLACE COVER	SOLDERBALL MATERIAL
75319-20*0	63Sn/37Pb
75319-20*5/6	LEADFREE

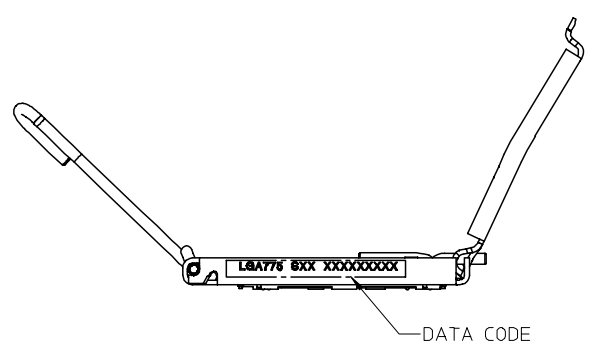
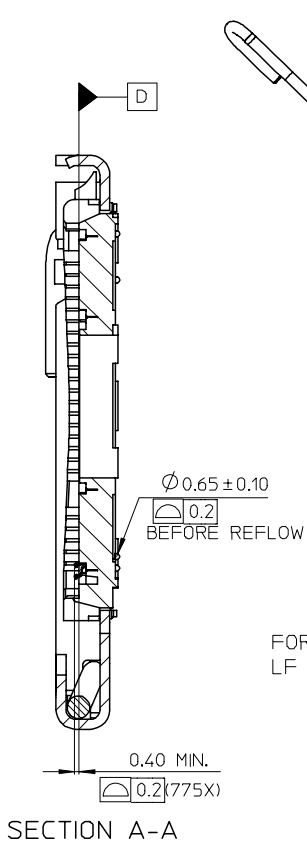
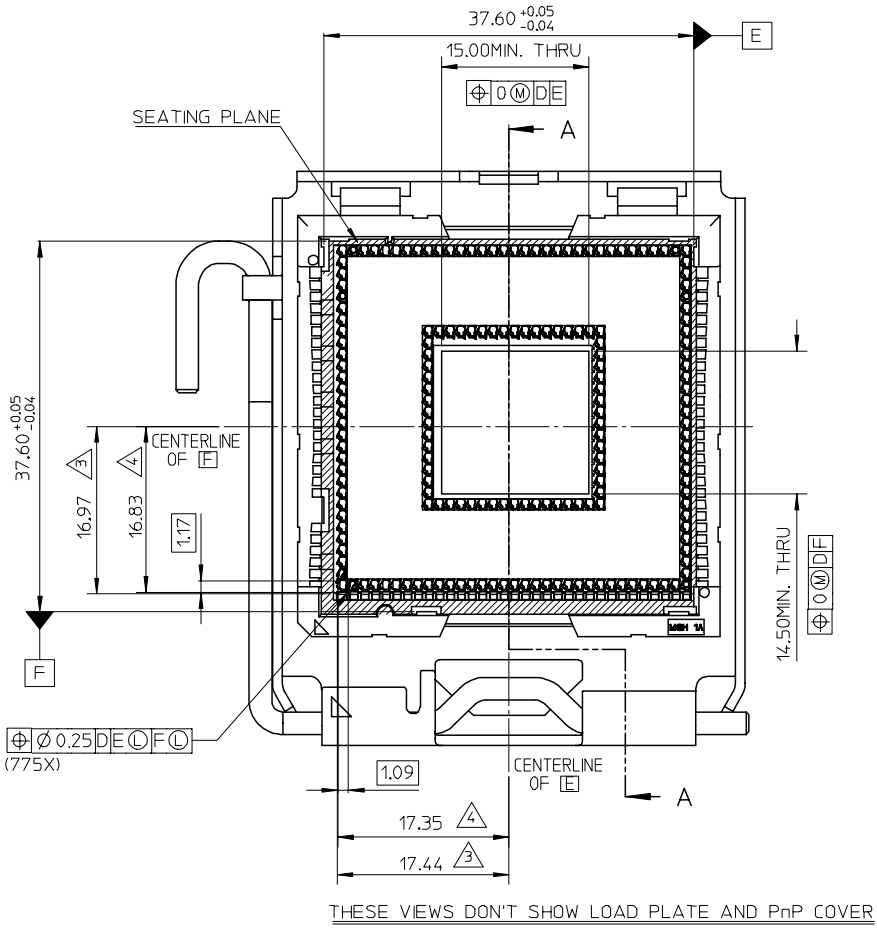
RELEASED EC NO: DRWN:WFJENG CHKD:JZHANG APPR:JNCHEN 2006/11/27 2006/12/01 2007/01/17	QUALITY SYMBOLS	GENERAL TOLERANCES (UNLESS SPECIFIED)	DIMENSION STYLE	SCALE	DESIGN UNITS	THIRD ANGLE PROJECTION																		
	$\nabla=0$ $\nabla C=0$	<table border="1"> <tr> <th></th> <th>mm</th> <th>INCH</th> </tr> <tr> <td>4 PLACES</td> <td>± ---</td> <td>± ---</td> </tr> <tr> <td>3 PLACES</td> <td>± ---</td> <td>± ---</td> </tr> <tr> <td>2 PLACES</td> <td>± 0.25</td> <td>± ---</td> </tr> <tr> <td>1 PLACE</td> <td>± 0.3</td> <td>± ---</td> </tr> <tr> <td colspan="3">ANGULAR ± 2 °</td> </tr> </table>		mm	INCH	4 PLACES	± ---	± ---	3 PLACES	± ---	± ---	2 PLACES	± 0.25	± ---	1 PLACE	± 0.3	± ---	ANGULAR ± 2 °			MM ONLY	1:1	METRIC	
		mm	INCH																					
	4 PLACES	± ---	± ---																					
3 PLACES	± ---	± ---																						
2 PLACES	± 0.25	± ---																						
1 PLACE	± 0.3	± ---																						
ANGULAR ± 2 °																								
DRAFT WHERE APPLICABLE MUST REMAIN WITHIN DIMENSIONS	DRAWN BY XSZHANG CHECKED BY JZHANG APPROVED BY VTYAP DATE 2005/08/31 DATE 2005/08/31 DATE 2005/08/31	TITLE LGA775 CKT SOCKET FULL ASSEMBLY	MATERIAL NO. SEE TABLE	DOCUMENT NO. SD-75319-001	SHEET NO. 1 OF 3	MOLEX INCORPORATED																		
THIS DRAWING CONTAINS INFORMATION THAT IS PROPRIETARY TO MOLEX INCORPORATED AND SHOULD NOT BE USED WITHOUT WRITTEN PERMISSION																								

9 8 7 6 5 4 3 2 1

10 9 8 7 6 5 4 3 2 1

F
E
D
C
B
A

F
E
D
C
B
A



DATE CODE LEGEND

FOR LEADED
LGA775 SX1 X X X X X X X X

- LOT NO
- D:DAY N:NIGHT
- WORKING DAY:1-MON 2-TUE.
- WORKING WEEK OF THE YEAR
- WORKING YEAR:05-2005
- A:15u" Au B:GOLDFLASH
- D:10u" Au

FOR LEAD FREE
LF LGA775 SX2 X X X X X X X X

- LOT NO
- D:DAY N:NIGHT
- WORKING DAY:1-MON 2-TUE
- WORKING WEEK OF THE YEAR
- WORKING YEAR:05-2005
- A:15u" Au B:GOLDFLASH
- D:10u" Au

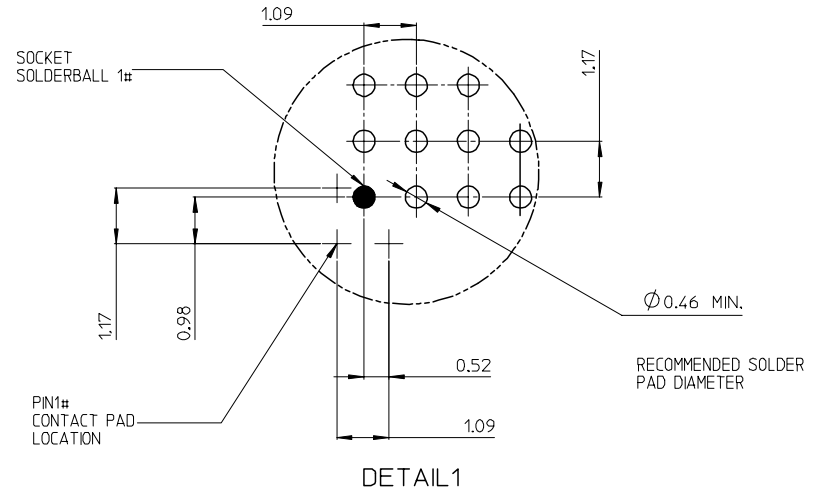
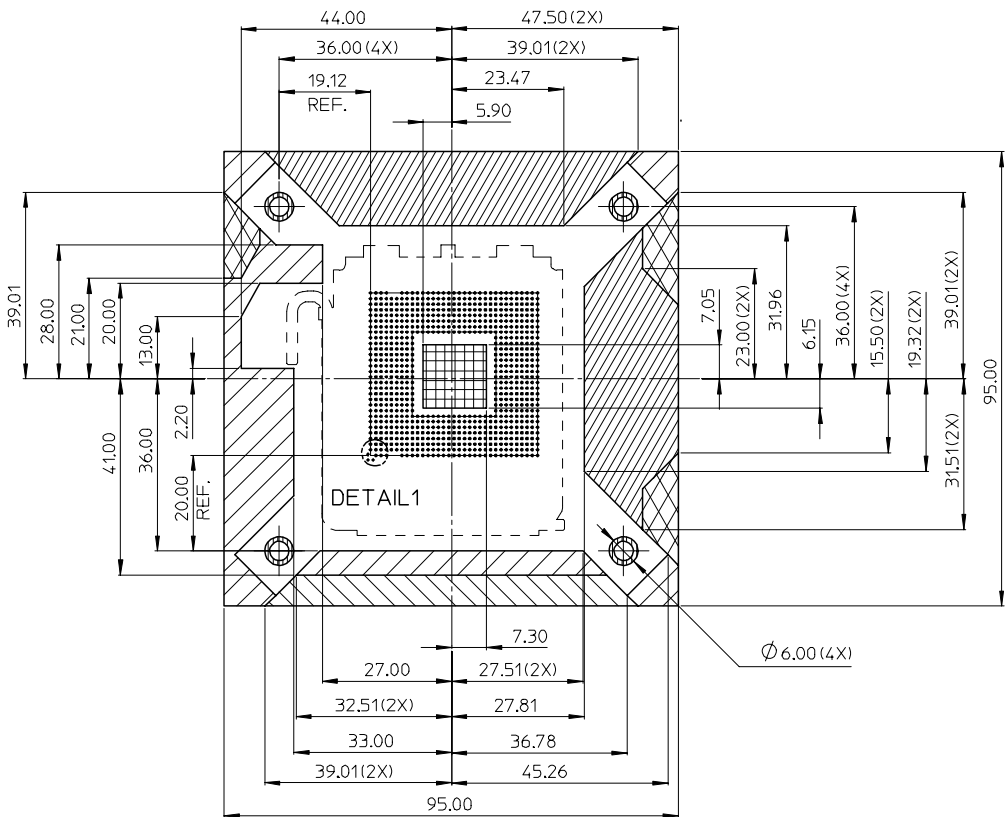
THESE VIEWS DON'T SHOW LOAD PLATE AND PnP COVER

RELEASED EC NO: DRWN:WFENG CHKD:ZHANG APPR:JNCHEN	2006/11/27 2006/12/01 2007/01/17	QUALITY SYMBOLS ▽=0 ▽=0	GENERAL TOLERANCES (UNLESS SPECIFIED)		DIMENSION STYLE MM ONLY		SCALE 1:1	DESIGN UNITS METRIC	THIRD ANGLE PROJECTION		
			4 PLACES ± --- ± --- 3 PLACES ± --- ± --- 2 PLACES ± 0.25 ± --- 1 PLACE ± 0.3 ± ---	mm INCH ± --- ± --- ± 0.25 ± --- ± 0.3 ± ---	DRAWN BY XSZHANG	DATE 2005/08/31	TITLE LGA775 CKT SOCKET FULL ASSEMBLY				
			ANGULAR ± 2 °		CHECKED BY JZHANG	DATE 2005/08/31	MOLEX INCORPORATED				
			DRAFT WHERE APPLICABLE MUST REMAIN WITHIN DIMENSIONS		APPROVED BY VTYAP	DATE 2005/08/31	MATERIAL NO. SEE TABLE	DOCUMENT NO. SD-75319-001	SHEET NO. 2 OF 3		

9 8 7 6 5 4 3 2 1

10 9 8 7 6 5 4 3 2 1

F
E
D
C
B
A



LEGEND	
	SOCKET/THERMO/MECH COMP KEEP-IN
	10.0MM MAX. COMP. HT
	6.0MM MAX. COMP. HT
	2.5MM MAX. COMP. HT
	25.0MM MAX. COMP. HT
	1.8MM MAX. COMP. HT
	BOARD ROUTING KEEP-OUT

RELEASED EC NO: 2006/11/27 DRWN: WFDENG 2006/12/04 CHKD: JZHANG APPR: JINCHEN 2007/01/17 REV:	QUALITY SYMBOLS ▽=0 ▽C=0	GENERAL TOLERANCES (UNLESS SPECIFIED) mm INCH 4 PLACES ± --- ± --- 3 PLACES ± --- ± --- 2 PLACES ± 0.25 ± --- 1 PLACE ± 0.3 ± --- ANGULAR ± 2 °	DIMENSION STYLE MM ONLY DRAWN BY XSZHANG DATE 2005/08/31 CHECKED BY JZHANG DATE 2005/08/31 APPROVED BY VTYAP DATE 2005/08/31	SCALE 1:1 DESIGN UNITS METRIC THIRD ANGLE PROJECTION	TITLE LGA775 CKT SOCKET FULL ASSEMBLY	
	DRAFT WHERE APPLICABLE MUST REMAIN WITHIN DIMENSIONS	MATERIAL NO. SEE TABLE DOCUMENT NO. SD-75319-001 SHEET NO. 3 OF 3	MOLEX INCORPORATED			
	THIS DRAWING CONTAINS INFORMATION THAT IS PROPRIETARY TO MOLEX INCORPORATED AND SHOULD NOT BE USED WITHOUT WRITTEN PERMISSION					
	SIZE A3					

9 8 7 6 5 4 3 2 1