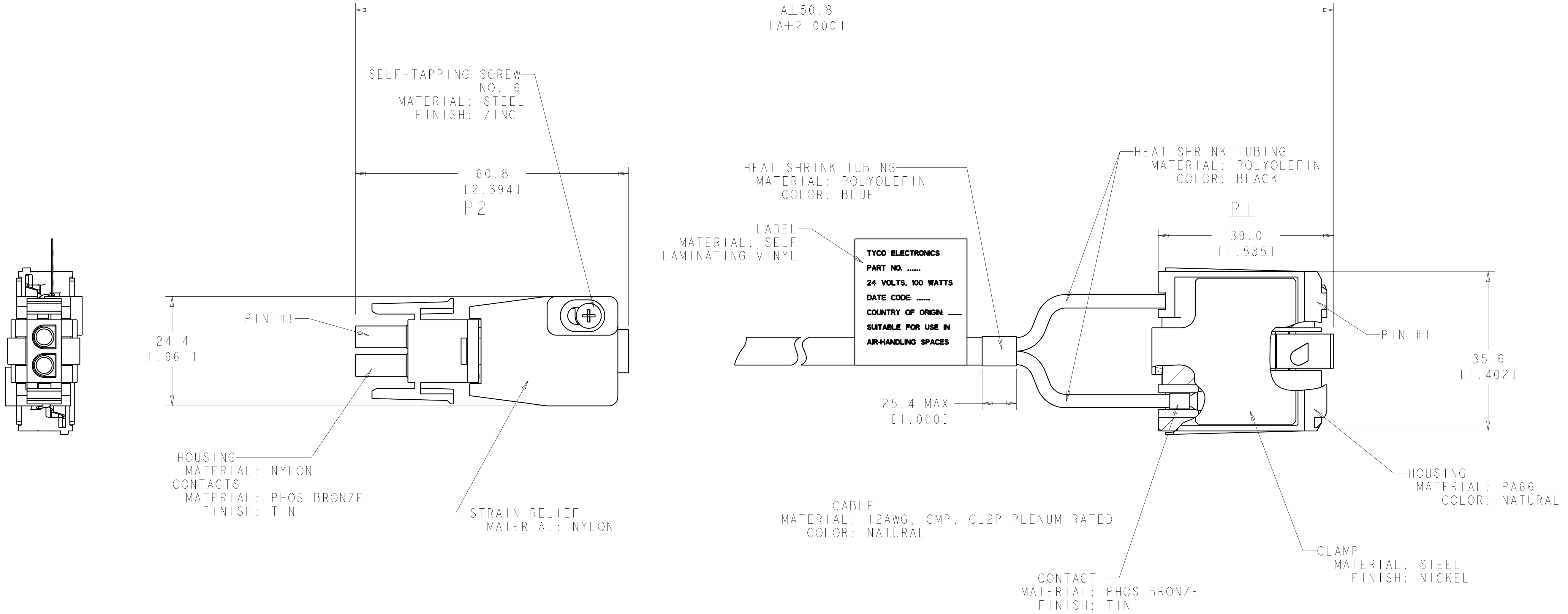


LOC		DIST		REVISIONS			
CM	00	P	LTR	DESCRIPTION	DATE	DWN	APVD
		A		SEE ECO-11-019559	26SEP2011	GIP	MTL

WIRING CHART	
P1	P2
PIN #1	PIN #1
PIN #2	PIN #2

1. DIRECTIVE 2002/95/EC (ROHS) COMPLIANT.
 2. ITEMS 2106725-5 & -6 ARE TO REMAIN IN PRELIMINARY STATUS.



2	9144.0	2103725-6
2	7620.0	2106725-5
	6096.0	2106725-4
	4572.0	2106725-3
	3048.0	2106725-2
	1524.0	2106725-1
	DIM A (CABLE LENGTH)	PART NO

THIS DRAWING IS A CONTROLLED DOCUMENT. DWN: MM VAN SCOOC 19OCT2009
 CHK: S. HEADER 19OCT2009
 APVD: M. LUKSIC 26SEP2011

STC TE Connectivity

ASSEMBLY, CABLE POWER-IN

SIZE: CAGE CODE: DRAWING NO: RESTRICTED TO: A100779C-2106725

CUSTOMER DRAWING SCALE: 4:1 SHEET 1 OF 1 REV A