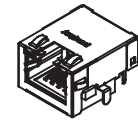
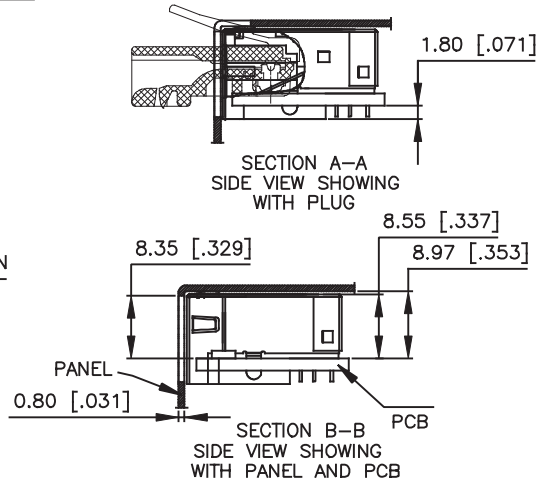
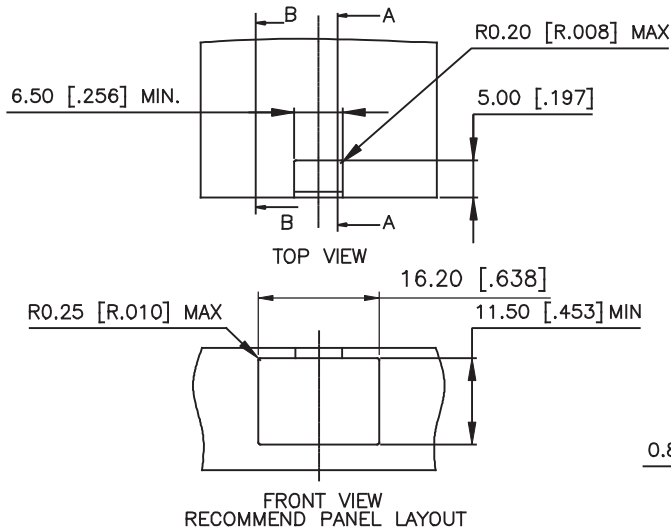


REVISIONS			
REV	DESCRIPTION, ECN, EAR NO.	DATE	APP'D
A	PROPOSAL DRAWING	JULY17,2012	L.CHAN
B	PROPOSAL DRAWING	OCT31,2012	L.CHAN
C	ADD THE INCH DIMENSIONS	MAY07,2013	L.CHAN

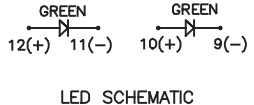
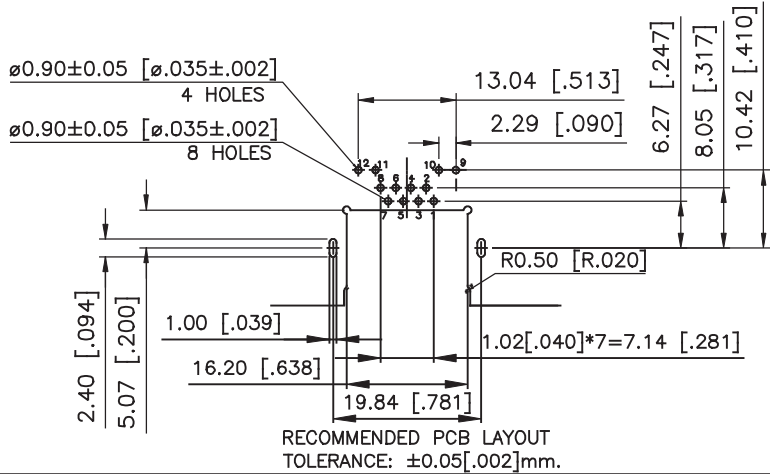


- NOTES:
ELECTRICAL:
 1. VOLTAGE RATING : 125 VAC.
 2. CURRENT RATING : 1.25 AMP.
 3. INSULATING RESISTANCE : 500 MEGOHMS MINIMUM.
 4. DIELECTRIC STRENGTH : 1000 VAC 60Hz, 1MIN.
 5. CATEGORY 6 CHARACTERISTIC:
 Frequency Near-End Crosstalk Return Loss Insertion loss

MHz	dB, MIN.	dB, MIN.	dB, MAX.
1.0	75.0	30.0	0.1
4.0	75.0	30.0	0.1
8.0	75.0	30.0	0.1
10.0	74.0	30.0	0.1
16.0	69.9	30.0	0.1
20.0	68.0	30.0	0.1
25.0	66.0	30.0	0.1
31.25	64.1	30.0	0.11
62.5	58.1	28.1	0.16
100.0	54.0	24.0	0.20
200.0	48.0	18.0	0.28
250.0	46.0	16.0	0.32



- MECHANICAL:**
 1. SHIELD : STAINLESS STEEL, WITH TIN-DIP ON SOLDER TABS.
 2. HOUSING : HIGH TEMP THERMOPLASTIC, UL 94V-0.
 3. INSERT : HIGH TEMP THERMOPLASTIC UL 94V-0.
 4. PCB : FR-4.
 5. CONTACT : PHOSPHOR BRONZE.
 SELECTIVE GOLD PLATING FOR MATING SURFACE, SEE AMPHENOL PART NUMBER FOR DETAIL.
 50u" NICKEL UNDERPLATE
 100u" MATTE TIN PLATING ON CONTACT SOLDER TAIL.
- ENVIRONMENTAL:**
 1. STORAGE : -40° TO +85°.
 2. OPERATION : -40° TO +85°.
 MATES WITH MODULAR PLUG CONFORMING TO FCC PART 68, SUBPART F.
 RECOMMENDED SOLDER PROCESS: WAVE SOLDER, PEAK TEMPERATURE 260° FOR 10 SECOND.

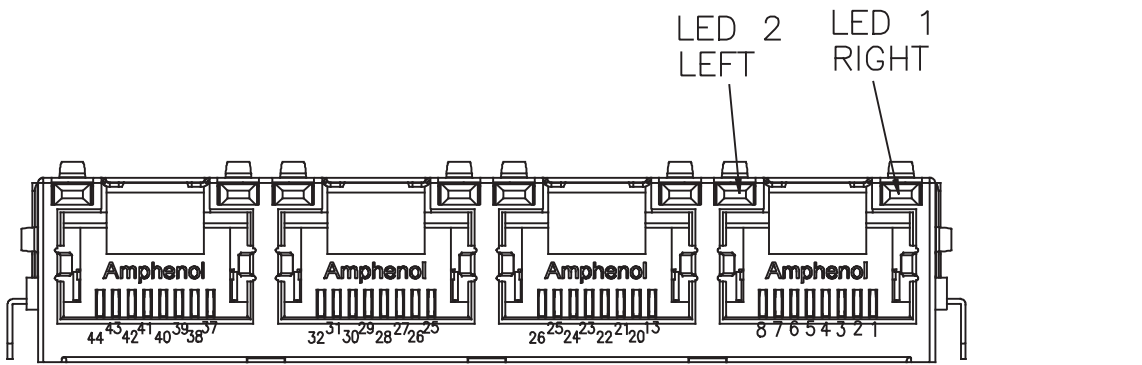


- AMPHENOL PART NUMBER: RJE71-188-1XXX
 GOLD PLATING OPTION _____
 1=6u" [0.15 MICRONS] GOLD PLATING
 2=15u" [0.38 MICRONS] GOLD PLATING
 3=30u" [0.76 MICRONS] GOLD PLATING
 4=50u" [1.27 MICRONS] GOLD PLATING
- OPTIONS (SEE BELOW TABLE 1)
 REFER TO LED OPTIONS DRAWING FOR ORDERING CODES

AMPHENOL P/N:	DIM A	RECOMMEND PCB THICKNESS
RJE711881XX1	3.18 [0.125]	2.36 [0.093]
RJE711881XX2	2.27 [0.089]	1.57 [0.062]
RJE711881XX3	2.16 [0.085]	1.57 [0.062]

UNLESS SPECIFIED OTHERWISE PRIMARY UNITS MILLIMETERS	DRAWN HUGH WANG JULY 17,2012 CHECKED L.CHAN JULY 17,2012	Amphenol Canada Corp. www.amphenolcanada.com
SECONDARY INCHES REFERENCE IN PARENTHESES	M.E. APP'D Q.A. APP'D	
GENERAL TOLERANCES FOR MM 1 DECIMAL PLACE ±0.50 2 DECIMAL PLACE ±0.30 3 DECIMAL PLACE ±0.10 ANGULAR DEGREES ±3°	DWG APP'D ADRIAN.G JULY 17,2012 ENG. REL. NO. REF.	MODULAR JACK, SINGLE PORT, 8 POSITIONS, 8 CONTACTS, SHIELDED WITH TOP & SIDE TABS, WITH LED, SINK PCB TYPE, TAB UP, CAT6
THIRD ANGLE PROJECTION	DO NOT SCALE DRAWING	DWG NO. P-RJE71-188-1XXX
		CODE ID NO. 03554 DWG SIZE: C SCALE: N/A SHEET 1 OF 1

THIS DOCUMENT CONTAINS PROPRIETARY INFORMATION AND SUCH INFORMATION MAY NOT BE DISCLOSED TO OTHERS FOR ANY PURPOSE OR USED FOR MANUFACTURING PURPOSES WITHOUT WRITTEN PERMISSION FROM AMPHENOL CANADA CORP.



TYPICAL FOR SINGLE & MULTI-PORT

EXAMPLE:

PART NUMBER RJE71-488-1XXX



CODE	LED 2 (LEFT)	LED 1 (RIGHT)	CODE	LED 2 (LEFT)	LED 1 (RIGHT)	CODE	LED 2 (LEFT)	LED 1 (RIGHT)
0	BLOCKED	BLOCKED	9	GREEN	BLOCKED	J	BiC RD/GR	YELLOW
1	YELLOW	GREEN	A	BiC GR/YE	BiC GR/YE	K	YELLOW	BiC GR/OR
2	BLOCKED	GREEN	B	BiC RD/GR	BiC RD/GR	L	BiC GR/YE	RED
3	YELLOW	BLOCKED	C	BiC RD/GR	BiC GR/YE	M	RED	YELLOW
4	GREEN	YELLOW	D	GREEN	BiC GR/YE	P	GREEN	BiC RD/GR
5	GREEN	GREEN	E	YELLOW	BiC GR/YE	R	BiC GR/OR	GREEN
6	YELLOW	YELLOW	F	BiC GR/YE	YELLOW	T	RED	RED
7	RED	GREEN	G	BiC GR/OR	BiC GR/OR	V	BiC RD/GR	GREEN
8	GREEN	RED	H	BiC GR/YE	GREEN			

REVISIONS			
REV	ECN, ERN NO.	DATE	APPRD.
A	PROPOSAL DRAWING	OCT. 30,2012	L.CHAN

LED SPECIFICATIONS:

FORWARD VOLTAGE: 2.1 VOLTS TYP.
 REVERSE VOLTAGE: 5.0 VOLTS MIN.
 LUMINOUS INTENSITY: 0.5 mCd MIN.

(AT If=2mA)

STORAGE TEMPERATURE: -40° TO 85° C
 LEAD SOLDERING TEMPERATURE: 260° C

(5 SEC, 1/16" FROM CASE)

PLATING ON TAILS: TIN OR TIN/COPPER
 ALLOY OVER SILVER

PRIMARY COLOR FOR BI-COLOR

LEDS IN STANDARD ANODE/
 CATHODE CONFIGURATION IS:

- RED-GREEN= RED
- RED-YELLOW= RED
- GREEN-YELLOW= GREEN
- GREEN-ORANGE= GREEN

LEGEND

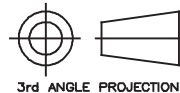
- BiC=BI-COLOR LED
- LOWC=LOW CURRENT LED
- YE=YELLOW
- GR=GREEN
- RD=RED
- OR=ORANGE

NOTE:

THE TWO DIGITS PRECEDING THE
 ADDITIONAL LED CODE MUST BE
 USED IN THE PART NUMBER, WHEN
 ORDERING ANY OF THE ADDITIONAL
 LED OPTIONS.

THIS DOCUMENT CONTAINS PROPRIETARY INFORMATION AND SUCH INFORMATION
 MAY NOT BE DISCLOSED TO OTHERS FOR ANY PURPOSE OR USED FOR MANUFACTURING
 PURPOSES WITHOUT WRITTEN PERMISSION FROM AMPHENOL CANADA CORP.

UNLESS OTHERWISE SOECIFIED DIMENSION ARE IN mm TOLERANCE ARE :		DRAWN HUGH WANG		DATE
FRACTION DECIMALS ANGLEs		DESIGNED HUGH WANG		OCT 30,2012
.X ±0.50	X° ±3.0°	CHECKED L.CHAN		OCT 30,2012
.XX ±0.30	.X° ±2.0°	I. E. APPRD.		
.XXX ±0.10	.XX° ±1.0°	Q. A. APPRD.		
		DWG. APPRD. ADRIAN,G		OCT 30,2012
		ENG. REL. NO.		
		REF.		
		DIMENSIONS ARE IN		CODE ID. NO.
		mm		03554



3rd ANGLE PROJECTION

Amphenol Canada Corp.

TITLE
 LED OPTIONS FOR RJE71, SINGLE
 OR MULTI-PORT CONNECTORS

DWG	DRAWING NO.	REV.
C	P-RJE71-LEDs	A
SCALE 4/1	WT. _____	SURF. _____
		SHEET 1 OF 1