

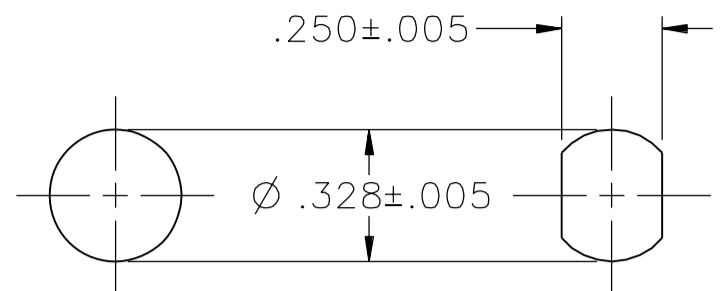
PART NUMBER	ITEM ①	BODY	COLOR	ITEM ②	STUD	ITEM ③	THUMB NUT	COLOR	ITEM ④	WASHER	ITEM ⑤	CAPTIVE NUT	ITEM ⑥	MOUNTING NUT
111-0101-001		NYLON	WHITE		BRASS SILVER PL .00005 MIN		NYLON	WHITE		BRASS SILVER PL .0001 MIN		BRASS NICKEL PL		BRASS NICKEL PL .0001 MIN
111-0102-001			RED					RED						
111-0103-001			BLACK					BLACK						
111-0104-001			GREEN					GREEN						
111-0105-001														
111-0106-001			ORANGE					ORANGE						
111-0107-001			YELLOW					YELLOW						
111-0108-001			BROWN					BROWN						
111-0109-001														
111-0110-001			BLUE					BLUE						
111-0111-001														
111-0112-001			VIOLET					VIOLET						
111-0113-001			GRAY					GRAY						
111-0114-001														
111-0115-001														
111-0116-001														
111-0117-001														
111-0118-001														
111-0119-001														
111-0120-001														

DRAWING NO.
C - 111-0101/0120-001

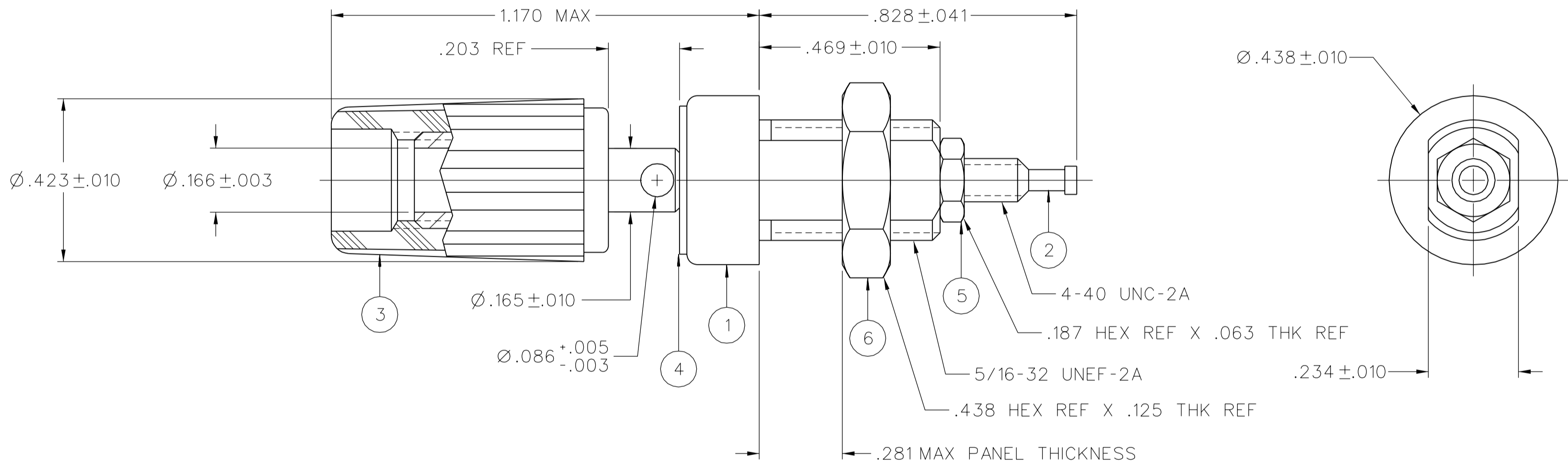
0 REVISIONS

REVISED AND REDRAWN. DRAWING WAS "C" SIZE 111-0101/0120-001/110 DATED 9-12-88. SPLIT INTO 4 SEPERATE DWGS. CREATED SHEET 2.

* REVISION NUMBER FOLLOWED BY AN ALPHA *
* CHARACTER INDICATES DRAWING CLARIFICATION OR PART NUMBER ADDITION ONLY. *



MOUNTING HOLE OPTIONS
2:1



NOTES:
SPECIFICATIONS:
ELECTRICAL:
CURRENT RATING: 15 AMPS DC MINIMUM
DIELECTRIC WITHSTANDING VOLTAGE: 5700 VRMS MINIMUM
RECOMMENDED WORKING VOLTAGE: 2850 VRMS MAXIMUM
INSULATION RESISTANCE: 5000 MEGOHMS MINIMUM
CONTACT RESISTANCE: 10 MILLIOHMS MAXIMUM (MATING PLUG)
CAPACITANCE (STUD TO PANEL): 3.3 PF NOMINAL
MECHANICAL:
THUMBNUIT WITHSTANDING TORQUE: 4 IN-LB MINIMUM
INSULATOR WITHSTANDING TORQUE: 8 IN-LB MINIMUM
PLASTIC MOUNTING THREAD STRIPPING TORQUE: 6 IN-LB MINIMUM
WIRE ACCEPTABILITY: 16 AWG OR SMALLER
WIRE ATTACHMENT: SOLDER
MATING REFERENCE:
BANANA PLUG WIDTH: .175 NOMINAL
CROSSHOLE WIRE: 12 AWG OR SMALLER
THUMBNUIT DURABILITY: 1000 CYCLES
ENVIRONMENTAL:
(MEETS OR EXCEEDS THE APPLICABLE PARAGRAPH OF MIL-P-55149)
OPERATING TEMPERATURE: -55 DEG C TO 85 DEG C
TEMPERATURE RISE AT RATED CURRENT: 10 DEG C
CORROSION: MIL-STD-202, METHOD 101, CONDITION B
SHOCK: MIL-STD-202, METHOD 213, CONDITION 1
VIBRATION: MIL-STD-202, METHOD 201
MOISTURE RESISTANCE: MIL-STD-202, METHOD 106

CUSTOMER DRAWING

THIS DRAWING TO BE INTERPRETED PER ASME Y 14.5M - 1994

"μSTATION"

COMPANY CONFIDENTIAL

TOLERANCE UNLESS OTHERWISE SPECIFIED		DRAWN BY	DATE	Connectivity Solutions P.O. Box 1732 Waseca, MN 56093 1-800-247-8256
DECIMALS	mm	RJB	1-9-03	
.XX	_____	CHECKED BY	DATE	TITLE ASSEMBLY, BINDING POST INSULATED, THREADED STUD
.XXX	_____	APPROVED BY	DATE	
MATL	_____	RJB	2-12-03	SHEET 2 OF 2
FINISH	_____	RELEASE DATE	2-12-03	
U/M	INCH	SCALE	4:1	DRAWING NO. C - 111-0101-0120-001