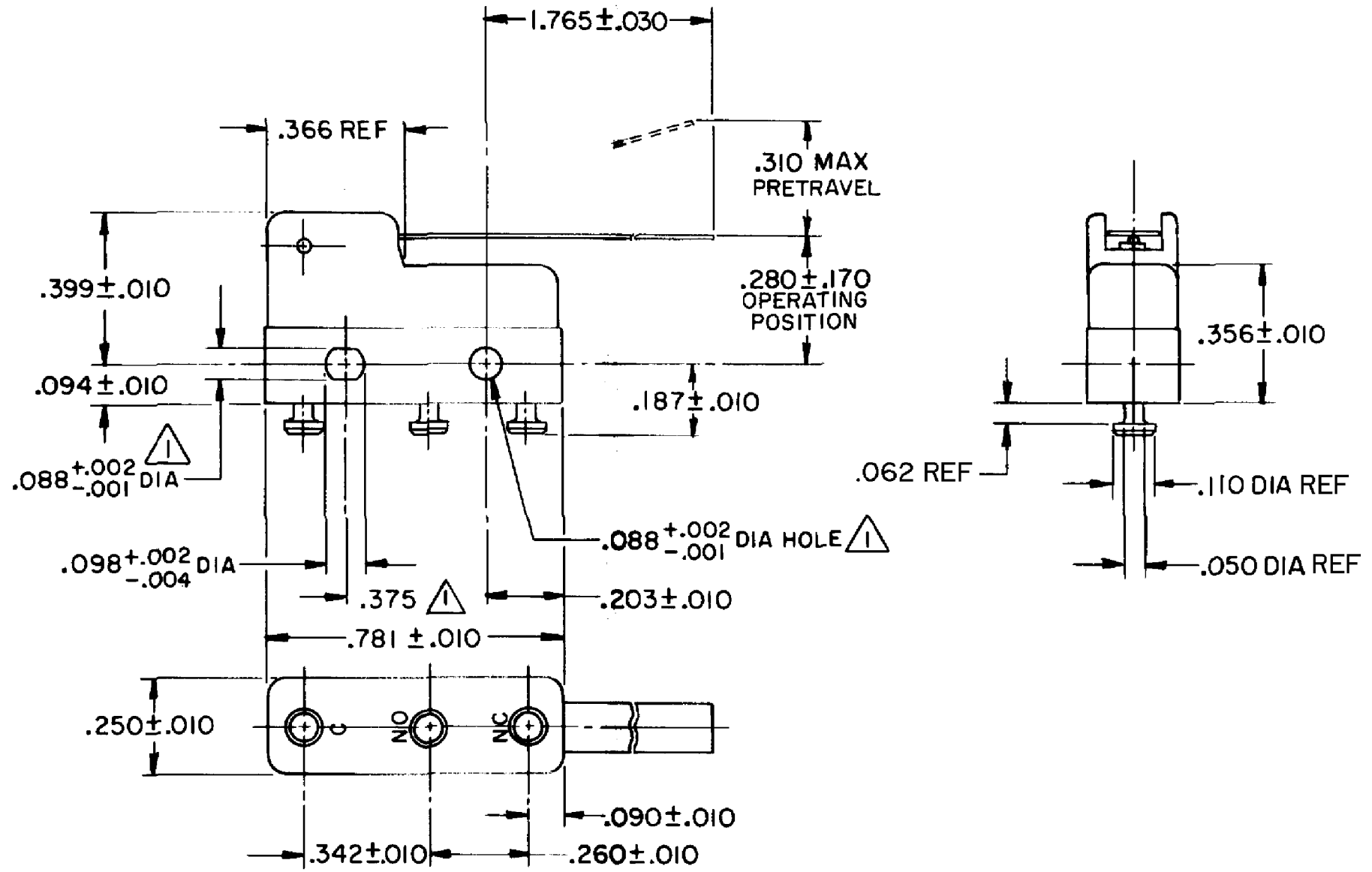
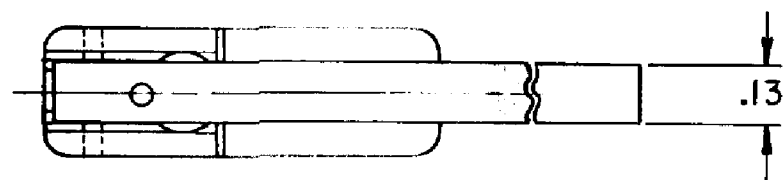


HONEYWELL  
PART NUMBER  
311SM703-T  
PRODUCT CODE  
TZA2683

REV	DOCUMENT	CHANGED BY	CHECK
7	0038445	SSK 21APR08	BLR



- NOTES**
- ▲ MOUNTING HOLES WILL ACCEPT PINS OR SCREWS OF .087 MAX DIA ON .375 ± .002 CENTERS
  - 2- SWITCH WILL WITHSTAND TEMPERATURE OF 250°F
  - 3- TERMINALS ARE PLATED FOR SOLDERING

RELEASE NO.	PR-275
REPLACES	-

**CHARACTERISTICS**

OPERATING FORCE -- 6 GRAM MAX

RELEASE FORCE -- 1 GRAM MIN

DIFFERENTIAL TRAVEL -- .070 MAX

OVERTRAVEL -- .057 MIN

**ELECTRICAL DATA**

CONTACT ARRANGEMENT  
SPDT

30 VOLTS DC RATING

	SEA LEVEL	50,000 FT
INDUCTIVE	3 AMP	2.5 AMP
RESISTIVE	5 AMP	5 AMP

MAXIMUM INRUSH 24 AMP

APPROVALS

UL, CSA	4A, 250 VAC		BRAND L119
---------	-------------	--	------------

DESIGN UNITS: INCH

TOLERANCES UNLESS NOTED:

NO PLACE	X	±
ONE PLACE	.X	±
TWO PLACE	.XX	±
THREE PLACE	.XXX	±
FOUR PLACE	.XXXX	±
ANGLES		±

THIRD ANGLE PROJECTION

DRAWN	VK	21FEB 08
CHECK	RJ	21FEB 08
THIS DRAWING COVERS A PROPRIETARY ITEM AND IS THE PROPERTY OF HONEYWELL. THIS DRAWING IS NOT TO BE COPIED OR USED WITHOUT THE PERMISSION OF HONEYWELL.		
INTERPRET PER ANSI Y14.5M-1982 OTHER HONEYWELL ENGINEERING STANDARDS MAY APPLY		
RASTER		

**Honeywell**

TITLE: SWITCH - BASIC

SIZE	TYPE	DRAWING NAME	REV
B	I	311SM703-T	7
SCALE	-	WEIGHT .006 LB MAX	SHEET 1 OF 1