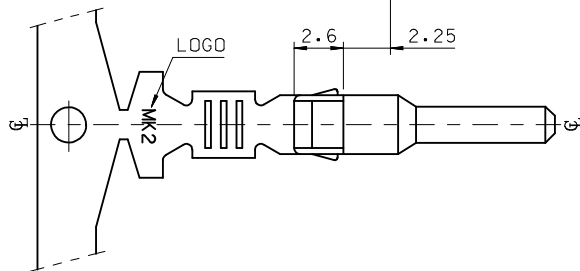
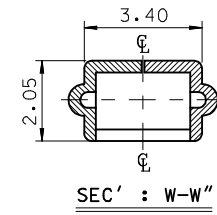
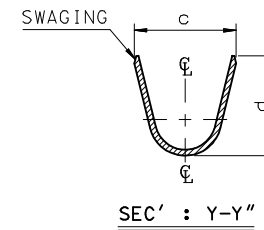
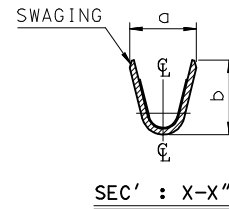
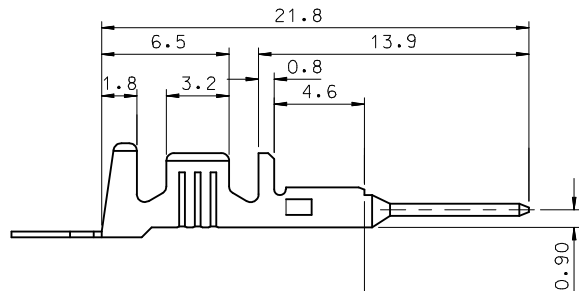
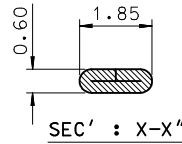


- NOTES.
1. MATERIAL : Ⓢ BRASS, PRE-TIN PLATED
 2. FINISH : 0.8~1.8 μ m, Tin(Sn) plating overall
0.3~0.8 μ m, Copper(Cu) plating
 3. PRODUCT SPECIFICATION : PS-35150-001, PS-35180-002
PS-35180-003, PS-35524-001
 4. CRIMPING SPECIFICATION : CS-35745-001
 5. RECOMMENDED LENGTH OF WIRE STRIP IS 4.0~4.8mm



MATERIAL NO	ENG. No.	AWG	a	b	c	d	PITCH 'P'
357450210	35745-0210	#18-#14	3.4	3.8	5.2	4.8	12.0
357450110	35745-0110	#22-#20	2.85	2.8	4.2	4.0	10.6
357450410	35745-0410	#24	2.2	1.75	3.85	3.5	10.6

REVISED	EC NO: KOR2009-0151	2009/05/18
	TDRAWN: JHPARK01	2009/06/18
	CHKD: WY. YANG	2009/07/01
	APPR: YUNSIKKIM	2009/07/01
REV	DESCRIPTION	

QUALITY SYMBOLS	$\blacktriangledown=0$		
	$\text{C}=0$		
GENERAL TOLERANCES (UNLESS SPECIFIED)		mm	INCH
	4 PLACES	\pm ---	\pm ---
	3 PLACES	\pm ---	\pm ---
	2 PLACES	\pm 0.2	\pm ---
	1 PLACE	\pm 0.3	\pm ---
	ANGULAR $\pm 1^\circ$		
DRAFT WHERE APPLICABLE MUST REMAIN WITHIN DIMENSIONS			

DIMENSION STYLE		SCALE	DESIGN UNITS	THIRD ANGLE PROJECTION
MM ONLY		4:1	METRIC	Ⓢ
DRAWN BY	DATE	TITLE		
JS.KANG	1998/01/19	.070 MALE TERMINAL (A-TYPE)		
CHECKED BY	DATE			
BK.CHOI	1998/01/19			
APPROVED BY	DATE			
CW.LEE	1998/01/19			
MATERIAL NO.		DOCUMENT NO.		
SEE TABLE		SD-35745-001		
SIZE	THIS DRAWING CONTAINS INFORMATION THAT IS PROPRIETARY TO MOLEX INCORPORATED AND SHOULD NOT BE USED WITHOUT WRITTEN PERMISSION			
A3				

MATERIAL NO.		DOCUMENT NO.		SHEET NO.
SEE TABLE		SD-35745-001		1 OF 01