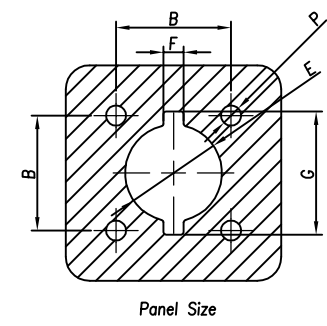
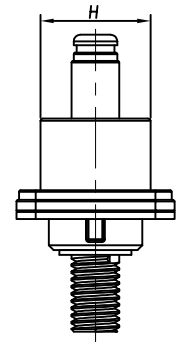
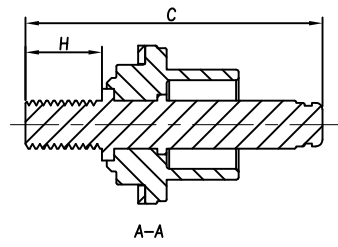
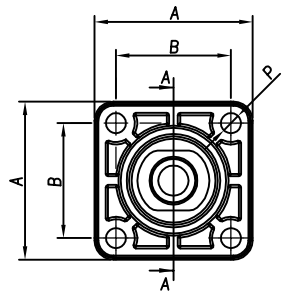
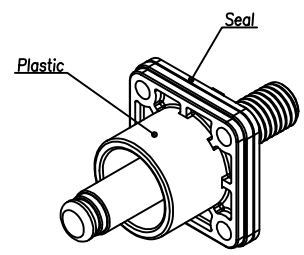


CUSTOMER DRAWING

| REVISIONS | | | | |
|-----------|-----------------|----------|----|------|
| REV | DESCRIPTION | DATE | BY | APPR |
| A | INITIAL RELEASE | 12/12/13 | DH | EC |

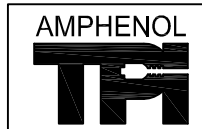


Ordering Example:

RadLok ———— RL 9
 RadLok Pin ———— 080
 RadLok Size: $\varnothing 8.0\text{mm}$ ———— 10
 Pin To Thread ———— XX
 Plating: 10 - Silver
 20 - Tin
 30 - Nickel
 Feed Thru ———— F1

Specification

| Size (mm) | A (mm) | B (mm) | C (mm) | D (mm) | E (mm) | F (mm) | G (mm) | H (mm) | Thread | P | Current (A) | Ordering Number (XXX-For Plating) | Plating |
|-----------|--------|--------|--------|--------|--------|--------|--------|--------|-------------|----|-------------|-----------------------------------|----------------------------------|
| 3.6 | 24.5 | 16.0 | 32.5 | 13.1 | 13.7 | 4.2 | 19.2 | 5 | M3x0.5-6g | M3 | 70 | RL9036-10XX-F1 | 10 Silver 20 Tin 30 Nickel |
| | | | | | | | 21.7 | 10 | M6x1.0-6g | | | | |
| 5.7 | 27.0 | 18.0 | 42.1 | 16.2 | 16.2 | | 23.7 | 12 | M8x1.25-6g | M4 | 120 | RL9057-10XX-F1 | |
| 8.0 | 30.0 | 21.0 | 50.4 | 19.6 | 18.2 | | 25.7 | 16 | M10x1.5-6g | | 200 | RL9080-10XX-F1 | |
| 10.0 | 33.0 | 24.0 | 62.0 | 23.0 | 20.2 | | 27.7 | 16 | M12x1.75-6g | | 300 | RL9100-10XX-F1 | |
| 12.0 | 36.0 | 26.0 | 66.0 | 25.5 | 22.2 | | 27.7 | 16 | M12x1.75-6g | | 400 | RL9120-10XX-F1 | |



Amphenol Technical Products International GZ

| | | | | | | |
|------------------------------------|----|-------------|---|------------|-------------|--|
| 第三角投影 THIRD ANGLE PROJECTION | | 页面 SHEET | 幅面 SIZE | 版次 REV. | 比例 SCALE | PART NAME: RADLOK® Feed Thru Pin To Thread |
| 签名 SIGNATURE | | 日期 DATE | UNLESS OTHERWISE SPECIFIED 1) All dimensions are in metric(mm). 2) Tolerances are as follows: 0 PL DEC ±1.00 1 PL DEC ±0.50 2 PL DEC ±0.20 | | | DWG NO: See Specification |
| 制图 DRAWN | DH | 12/12/2013 | Angles ±1' | | | CUST PART #: N/A |
| 审核 CHECKED | GX | 12/12/2013 | | | | CUST REV. A |
| 批准 APPROVAL | EC | 12/12/2013 | | | | |

THIS DRAWING IS SUPPLIED FOR INFORMATION ONLY. DESIGN FEATURES, SPECIFICATIONS AND PERFORMANCE DATA SHOWN HEREON ARE THE PROPERTY OF THE AMPHENOL CORPORATION. NO RIGHTS OF REPRODUCTION ARE IMPLIED. ALL DIMENSIONS ARE SUBJECT TO NORMAL MANUFACTURING VARIATIONS.